

SPRR1B Antibody (C-term)
Affinity Purified Rabbit Polyclonal Antibody (Pab)
Catalog # AP9052b

Specification

SPRR1B Antibody (C-term) - Product Information

| | |
|-------------------|------------------------|
| Application | WB, IHC-P,E |
| Primary Accession | P22528 |
| Other Accession | P35321 |
| Reactivity | Human |
| Host | Rabbit |
| Clonality | Polyclonal |
| Isotype | Rabbit Ig |
| Calculated MW | 9888 |
| Antigen Region | 63-89 |

SPRR1B Antibody (C-term) - Additional Information

Gene ID 6699

Other Names

Cornifin-B, 149 kDa pancornulin, Small proline-rich protein IB, SPR-IB, SPRR1B

Target/Specificity

This SPRR1B antibody is generated from rabbits immunized with a KLH conjugated synthetic peptide between 63-89 amino acids from the C-terminal region of human SPRR1B.

Dilution

WB~~1:1000
IHC-P~~1:50~100

Format

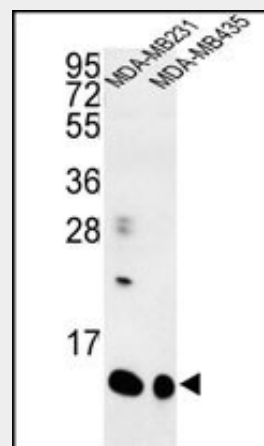
Purified polyclonal antibody supplied in PBS with 0.09% (W/V) sodium azide. This antibody is purified through a protein A column, followed by peptide affinity purification.

Storage

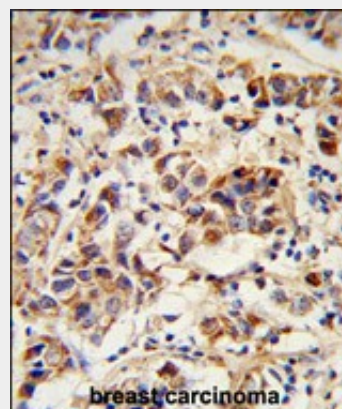
Maintain refrigerated at 2-8°C for up to 2 weeks. For long term storage store at -20°C in small aliquots to prevent freeze-thaw cycles.

Precautions

SPRR1B Antibody (C-term) is for research



Western blot analysis of SPRR1B Antibody (C-term) (Cat. #AP9052b) in MDA-MB231, MDA-MB435 cell line lysates (35ug/lane). SPRR1B (arrow) was detected using the purified Pab.



Formalin-fixed and paraffin-embedded human breast carcinoma reacted with SPRR1B Antibody (C-term), which was peroxidase-conjugated to the secondary antibody, followed by DAB staining. This data demonstrates the use of this antibody for immunohistochemistry; clinical relevance has not been evaluated.

SPRR1B Antibody (C-term) - Background

SPRR1B is a keratinocyte protein that first

use only and not for use in diagnostic or therapeutic procedures.

SPRR1B Antibody (C-term) - Protein Information

Name SPRR1B

Function

Cross-linked envelope protein of keratinocytes. It is a keratinocyte protein that first appears in the cell cytosol, but ultimately becomes cross-linked to membrane proteins by transglutaminase. All that results in the formation of an insoluble envelope beneath the plasma membrane. Can function as both amine donor and acceptor in transglutaminase-mediated cross-linkage.

Cellular Location

Cytoplasm.

Tissue Location

Suprabasal layers of squamous-differentiated tissues such as epidermis, esophagus, tongue and trachea

appears in the cell cytosol, but ultimately becomes cross-linked to membrane proteins by transglutaminase. All that results in the formation of an insoluble envelope beneath the plasma membrane. Can function as both amine donor and acceptor in transglutaminase-mediated cross-linkage.

SPRR1B Antibody (C-term) - References

Stemmler,S., et.al., Int. J. Immunogenet. 36 (4), 217-222 (2009)
Kainu,K., et.al., Exp. Dermatol. 18 (2), 109-115 (2009)

SPRR1B Antibody (C-term) - Protocols

Provided below are standard protocols that you may find useful for product applications.

- [Western Blot](#)
- [Blocking Peptides](#)
- [Dot Blot](#)
- [Immunohistochemistry](#)
- [Immunofluorescence](#)
- [Immunoprecipitation](#)
- [Flow Cytometry](#)
- [Cell Culture](#)