

**APP-Y756 Antibody**  
**Purified Rabbit Polyclonal Antibody (Pab)**  
**Catalog # AP9053A**

**Specification**

**APP-Y756 Antibody - Product Information**

Application	WB,E
Primary Accession	<a href="#">P05067</a>
Other Accession	<a href="#">P08592</a> , <a href="#">P79307</a> , <a href="#">P12023</a> , <a href="#">P53601</a>
Reactivity	Human
Predicted	Monkey, Mouse, Pig, Rat
Host	Rabbit
Clonality	Polyclonal
Isotype	Rabbit Ig
Antigen Region	735-763

**APP-Y756 Antibody - Additional Information**

**Gene ID 351**

**Other Names**

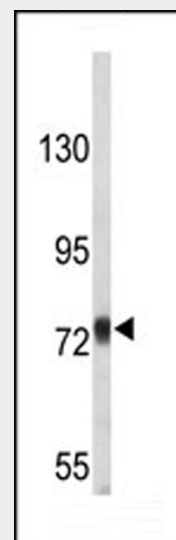
Amyloid beta A4 protein, ABPP, APPI, APP, Alzheimer disease amyloid protein, Cerebral vascular amyloid peptide, CVAP, PreA4, Protease nexin-II, PN-II, N-APP, Soluble APP-alpha, S-APP-alpha, Soluble APP-beta, S-APP-beta, C99, Beta-amyloid protein 42, Beta-APP42, Beta-amyloid protein 40, Beta-APP40, C83, P3(42), P3(40), C80, Gamma-secretase C-terminal fragment 59, Amyloid intracellular domain 59, AICD-59, AID(59), Gamma-CTF(59), Gamma-secretase C-terminal fragment 57, Amyloid intracellular domain 57, AICD-57, AID(57), Gamma-CTF(57), Gamma-secretase C-terminal fragment 50, Amyloid intracellular domain 50, AICD-50, AID(50), Gamma-CTF(50), C31, APP, A4, AD1

**Target/Specificity**

This APP antibody is generated from rabbits immunized with a KLH conjugated synthetic peptide between 735-763 amino acids from human APP.

**Dilution**

WB~~1:1000



Western blot analysis of APP-pY756 (Cat. #AP9053a) in T47D cell line lysates (35ug/lane). APP (arrow) was detected using the purified Pab.

**APP-Y756 Antibody - Background**

APP is a cell surface receptor and transmembrane precursor protein that is cleaved by secretases to form a number of peptides. Some of these peptides are secreted and can bind to the acetyltransferase complex APBB1/TIP60 to promote transcriptional activation, while others form the protein basis of the amyloid plaques found in the brains of patients with Alzheimer disease. Mutations in this gene have been implicated in autosomal dominant Alzheimer disease and cerebroarterial amyloidosis (cerebral amyloid angiopathy).

**APP-Y756 Antibody - References**

Blomqvist, M.E., et al., Neurobiol. Aging 26(6):795-802 (2005).  
Yoon, I.S., et al., J. Biol. Chem. 280(20):20140-20147 (2005).  
Chen, M., et al., Biochem. Biophys. Res.

**Format**

Purified polyclonal antibody supplied in PBS with 0.09% (W/V) sodium azide. This antibody is purified through a protein A column, followed by peptide affinity purification.

**Storage**

Maintain refrigerated at 2-8°C for up to 2 weeks. For long term storage store at -20°C in small aliquots to prevent freeze-thaw cycles.

**Precautions**

APP-Y756 Antibody is for research use only and not for use in diagnostic or therapeutic procedures.

Commun. 330(3):714-721 (2005).  
Yamamoto, M., et al., Am. J. Pathol. 166(5):1475-1485 (2005).  
Moir, R.D., et al., J. Biol. Chem. 280(17):17458-17463 (2005).

**APP-Y756 Antibody - Protein Information**

**Name** APP ([HGNC:620](#))

**Synonyms** A4, AD1

**Function**

Functions as a cell surface receptor and performs physiological functions on the surface of neurons relevant to neurite growth, neuronal adhesion and axonogenesis. Interaction between APP molecules on neighboring cells promotes synaptogenesis (PubMed:<a href="http://www.uniprot.org/citations/25122912" target="\_blank">25122912</a>). Involved in cell mobility and transcription regulation through protein-protein interactions. Can promote transcription activation through binding to APBB1-KAT5 and inhibits Notch signaling through interaction with Numb. Couples to apoptosis- inducing pathways such as those mediated by G(O) and JIP. Inhibits G(o) alpha ATPase activity (By similarity). Acts as a kinesin I membrane receptor, mediating the axonal transport of beta-secretase and presenilin 1 (By similarity). By acting as a kinesin I membrane receptor, plays a role in axonal anterograde transport of cargo towards synapses in axons (PubMed:<a href="http://www.uniprot.org/citations/17062754" target="\_blank">17062754</a>, PubMed:<a href="http://www.uniprot.org/citations/23011729" target="\_blank">23011729</a>). Involved in copper homeostasis/oxidative stress through copper ion reduction. In vitro,

copper-metallated APP induces neuronal death directly or is potentiated through  $\text{Cu}(2+)$ -mediated low-density lipoprotein oxidation. Can regulate neurite outgrowth through binding to components of the extracellular matrix such as heparin and collagen I and IV. The splice isoforms that contain the BPTI domain possess protease inhibitor activity. Induces a AGER-dependent pathway that involves activation of p38 MAPK, resulting in internalization of amyloid-beta peptide and leading to mitochondrial dysfunction in cultured cortical neurons. Provides  $\text{Cu}(2+)$  ions for GPC1 which are required for release of nitric oxide (NO) and subsequent degradation of the heparan sulfate chains on GPC1. N-APP binds TNFRSF21 triggering caspase activation and degeneration of both neuronal cell bodies (via caspase-3) and axons (via caspase-6).

#### **Cellular Location**

Cell membrane; Single-pass type I membrane protein. Membrane; Single-pass type I membrane protein. Perikaryon Cell projection, growth cone. Membrane, clathrin-coated pit. Early endosome. Cytoplasmic vesicle. Note=Cell surface protein that rapidly becomes internalized via clathrin-coated pits. Only a minor proportion is present at the cell membrane; most of the protein is present in intracellular vesicles (PubMed:20580937) During maturation, the immature APP (N-glycosylated in the endoplasmic reticulum) moves to the Golgi complex where complete maturation occurs (O-glycosylated and sulfated). After alpha-secretase cleavage, soluble APP is released into the extracellular space and the C-terminal is internalized to endosomes and lysosomes. Some APP accumulates in secretory transport vesicles leaving the late Golgi compartment and returns to the cell surface. APP sorts to the basolateral surface in epithelial cells. During neuronal differentiation, the Thr-743 phosphorylated form is located mainly in growth cones, moderately in neurites and sparingly in the cell body (PubMed:10341243). Casein kinase phosphorylation can occur either at the cell surface or within a post-Golgi compartment. Associates with GPC1 in perinuclear compartments. Colocalizes with SORL1 in a vesicular pattern in cytoplasm and perinuclear regions. [Amyloid-beta

protein 42]: Cell surface. Note=Associates with FPR2 at the cell surface and the complex is then rapidly internalized.

#### **Tissue Location**

Expressed in the brain and in cerebrospinal fluid (at protein level) (PubMed:2649245). Expressed in all fetal tissues examined with highest levels in brain, kidney, heart and spleen. Weak expression in liver. In adult brain, highest expression found in the frontal lobe of the cortex and in the anterior perisylvian cortex- opercular gyri. Moderate expression in the cerebellar cortex, the posterior perisylvian cortex-opercular gyri and the temporal associated cortex. Weak expression found in the striate, extra-striate and motor cortices. Expressed in cerebrospinal fluid, and plasma. Isoform APP695 is the predominant form in neuronal tissue, isoform APP751 and isoform APP770 are widely expressed in non-neuronal cells. Isoform APP751 is the most abundant form in T-lymphocytes. Appican is expressed in astrocytes.

#### **APP-Y756 Antibody - Protocols**

Provided below are standard protocols that you may find useful for product applications.

- [Western Blot](#)
- [Blocking Peptides](#)
- [Dot Blot](#)
- [Immunohistochemistry](#)
- [Immunofluorescence](#)
- [Immunoprecipitation](#)
- [Flow Cytometry](#)
- [Cell Culture](#)