

**CSF3R Antibody (Center)**  
**Affinity Purified Rabbit Polyclonal Antibody (Pab)**  
**Catalog # AP9075C**

**Specification**

**CSF3R Antibody (Center) - Product Information**

Application	<b>WB, IHC-P, FC,E</b>
Primary Accession	<a href="#">Q99062</a>
Reactivity	<b>Human</b>
Host	<b>Rabbit</b>
Clonality	<b>Polyclonal</b>
Isotype	<b>Rabbit Ig</b>
Calculated MW	<b>92156</b>
Antigen Region	<b>252-280</b>

**CSF3R Antibody (Center) - Additional Information**

**Gene ID 1441**

**Other Names**

Granulocyte colony-stimulating factor receptor, G-CSF receptor, G-CSF-R, CD114, CSF3R, GCSFR

**Target/Specificity**

This CSF3R antibody is generated from rabbits immunized with a KLH conjugated synthetic peptide between 252-280 amino acids from the Central region of human CSF3R.

**Dilution**

WB~~1:1000  
IHC-P~~1:10~50  
FC~~1:10~50

**Format**

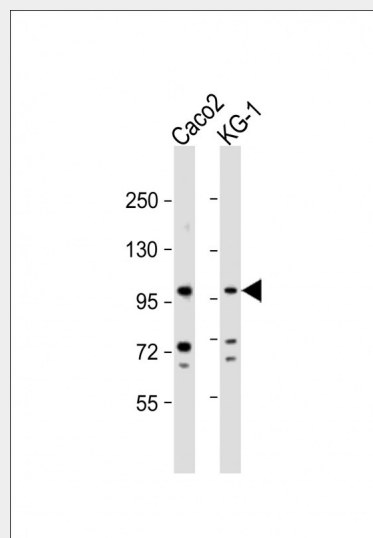
Purified polyclonal antibody supplied in PBS with 0.09% (W/V) sodium azide. This antibody is purified through a protein A column, followed by peptide affinity purification.

**Storage**

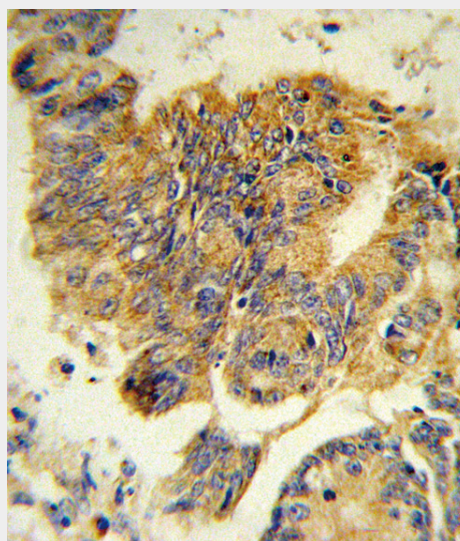
Maintain refrigerated at 2-8°C for up to 2 weeks. For long term storage store at -20°C in small aliquots to prevent freeze-thaw cycles.

**Precautions**

CSF3R Antibody (Center) is for research use



All lanes : Anti-CSF3R Antibody (Center) at 1:1000 dilution Lane 1: Caco2 whole cell lysate Lane 2: KG-1 whole cell lysate Lysates/proteins at 20 µg per lane. Secondary Goat Anti-Rabbit IgG, (H+L), Peroxidase conjugated at 1/10000 dilution. Predicted band size : 92 kDa Blocking/Dilution buffer: 5% NFDM/TBST.



Formalin-fixed and paraffin-embedded human colon carcinoma reacted with CSF3R Antibody (Center), which was

only and not for use in diagnostic or therapeutic procedures.

#### CSF3R Antibody (Center) - Protein Information

**Name** CSF3R

**Synonyms** GCSFR

#### Function

Receptor for granulocyte colony-stimulating factor (CSF3), essential for granulocytic maturation. Plays a crucial role in the proliferation, differentiation and survival of cells along the neutrophilic lineage. In addition it may function in some adhesion or recognition events at the cell surface.

#### Cellular Location

[Isoform 2]: Secreted.

#### Tissue Location

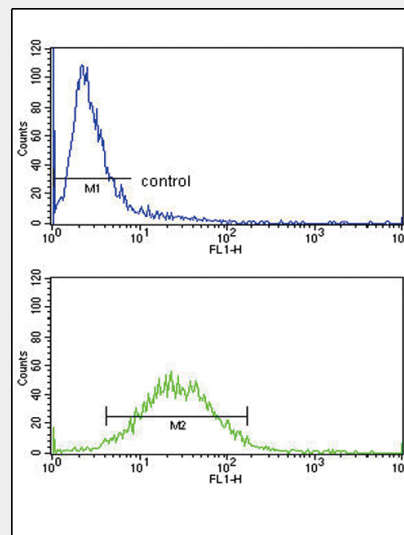
One or several isoforms have been found in myelogenous leukemia cell line KG-1, leukemia U-937 cell line, in bone marrow cells, placenta, and peripheral blood granulocytes. Isoform GCSFR-2 is found only in leukemia U-937 cells. Isoform GCSFR-3 is highly expressed in placenta

#### CSF3R Antibody (Center) - Protocols

Provided below are standard protocols that you may find useful for product applications.

- [Western Blot](#)
- [Blocking Peptides](#)
- [Dot Blot](#)
- [Immunohistochemistry](#)
- [Immunofluorescence](#)
- [Immunoprecipitation](#)
- [Flow Cytometry](#)
- [Cell Culture](#)

peroxidase-conjugated to the secondary antibody, followed by DAB staining. This data demonstrates the use of this antibody for immunohistochemistry; clinical relevance has not been evaluated.



CSF3R Antibody (Center) (Cat.#AP9075c) FC analysis of ZR-75-1 cells (bottom histogram) compared to a negative control cell (top histogram). FITC-conjugated goat-anti-rabbit secondary antibodies were used for the analysis.

#### CSF3R Antibody (Center) - Background

CSF3R is the receptor for colony stimulating factor 3, a cytokine that controls the production, differentiation, and function of granulocytes. The encoded protein, which is a member of the family of cytokine receptors, may also function in some cell surface adhesion or recognition processes. Four transcript variants encoding four different isoforms have been found for this gene, with three of the isoforms being membrane-bound and the other being secreted and soluble.

#### CSF3R Antibody (Center) - References

Yerges,L.M., et.al., J. Bone Miner. Res. 24 (12), 2039-2049 (2009)  
 Germeshausen,M., et.al., Blood 114 (16), 3504-3505 (2009)