

CIRBP Antibody (C-term)
Affinity Purified Rabbit Polyclonal Antibody (Pab)
Catalog # AP9139b

Specification

CIRBP Antibody (C-term) - Product Information

Application	WB, IHC-P,E
Primary Accession	Q14011
Other Accession	P60825 , P60824 , P60826
Reactivity	Human
Predicted	Hamster, Mouse, Rat
Host	Rabbit
Clonality	Polyclonal
Isotype	Rabbit Ig
Antigen Region	145-172

CIRBP Antibody (C-term) - Additional Information

Gene ID 1153

Other Names

Cold-inducible RNA-binding protein, A18 hnRNP, Glycine-rich RNA-binding protein CIRP, CIRBP, A18HNRNP, CIRP

Target/Specificity

This CIRBP antibody is generated from rabbits immunized with a KLH conjugated synthetic peptide between 145-172 amino acids from the C-terminal region of human CIRBP.

Dilution

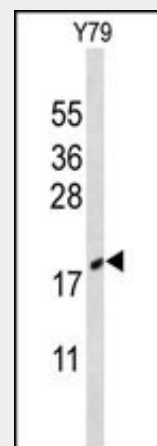
WB~~1:1000
IHC-P~~1:50~100

Format

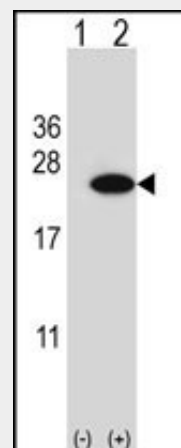
Purified polyclonal antibody supplied in PBS with 0.09% (W/V) sodium azide. This antibody is purified through a protein A column, followed by peptide affinity purification.

Storage

Maintain refrigerated at 2-8°C for up to 2 weeks. For long term storage store at -20°C in small aliquots to prevent freeze-thaw cycles.



Western blot analysis of CIRBP Antibody (C-term) (Cat. #AP9139b) in Y79 cell line lysates (35ug/lane). CIRBP (arrow) was detected using the purified Pab.



Western blot analysis of CIRBP (arrow) using rabbit polyclonal CIRBP Antibody (C-term) (Cat. #AP9139b). 293 cell lysates (2 ug/lane) either nontransfected (Lane 1) or transiently transfected (Lane 2) with the CIRBP gene.

Precautions

CIRBP Antibody (C-term) is for research use only and not for use in diagnostic or therapeutic procedures.

CIRBP Antibody (C-term) - Protein Information

Name CIRBP

Synonyms A18HNRNP, CIRP

Function

Cold-inducible mRNA binding protein that plays a protective role in the genotoxic stress response by stabilizing transcripts of genes involved in cell survival. Acts as a translational activator. Seems to play an essential role in cold-induced suppression of cell proliferation. Binds specifically to the 3'-untranslated regions (3'-UTRs) of stress-responsive transcripts RPA2 and TXN. Acts as a translational repressor (By similarity). Promotes assembly of stress granules (SGs), when overexpressed.

Cellular Location

Nucleus, nucleoplasm. Cytoplasm
Note=Translocates from the nucleus to the cytoplasm after exposure to UV radiation. Translocates from the nucleus to the cytoplasm into stress granules upon various cytoplasmic stresses, such as osmotic and heat shocks. Its recruitment into stress granules occurs in the absence of TIAR proteins (By similarity).

Tissue Location

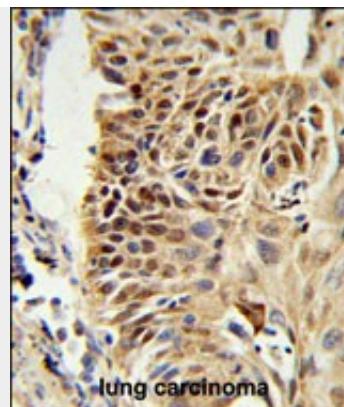
Ubiquitous.

CIRBP Antibody (C-term) - Protocols

Provided below are standard protocols that you may find useful for product applications.

- [Western Blot](#)
- [Blocking Peptides](#)
- [Dot Blot](#)
- [Immunohistochemistry](#)
- [Immunofluorescence](#)
- [Immunoprecipitation](#)
- [Flow Cytometry](#)
- [Cell Culture](#)

CIRBP Antibody (C-term) - Citations



CIRBP Antibody (C-term) (Cat. #AP9139b) IHC analysis in formalin fixed and paraffin embedded human lung carcinoma followed by peroxidase conjugation of the secondary antibody and DAB staining. This data demonstrates the use of the CIRBP Antibody (C-term) for immunohistochemistry. Clinical relevance has not been evaluated.

CIRBP Antibody (C-term) - Background

CIRBP is cold-inducible mRNA binding protein that plays a protective role in the genotoxic stress response by stabilizing transcripts of genes involved in cell survival. It acts as a translational activator and seems to play an essential role in cold-induced suppression of cell proliferation. It binds specifically to the 3'-untranslated regions (3'-UTRs) of stress-responsive transcripts RPA2 and TXN. This protein acts as a translational repressor (By similarity) and promotes assembly of stress granules (SGs), when overexpressed.

CIRBP Antibody (C-term) - References

Colinge J., et.al., Submitted (OCT-2008) to UniProtKB.
Yang R., et.al., Nucleic Acids Res. 34:1224-1236(2006).

- [Cold-inducible RNA-binding protein mediates cold air inducible airway mucin production through TLR4/NF- \$\kappa\$ B signaling pathway.](#)