

**CD49f Antibody (C-term)**  
**Purified Rabbit Polyclonal Antibody (Pab)**  
**Catalog # AP9255B**

**Specification**

**CD49f Antibody (C-term) - Product Information**

Application	<b>WB, IHC-P, FC,E</b>
Primary Accession	<a href="#">P23229</a>
Reactivity	<b>Human</b>
Host	<b>Rabbit</b>
Clonality	<b>Polyclonal</b>
Isotype	<b>Rabbit Ig</b>
Calculated MW	<b>126606</b>
Antigen Region	<b>1082-1110</b>

**CD49f Antibody (C-term) - Additional Information**

**Gene ID** 3655

**Other Names**

Integrin alpha-6, CD49 antigen-like family member F, VLA-6, CD49f, Integrin alpha-6 heavy chain, Integrin alpha-6 light chain, Processed integrin alpha-6, Alpha6p, ITGA6

**Target/Specificity**

This CD49f antibody is generated from rabbits immunized with a KLH conjugated synthetic peptide between 1082-1110 amino acids from the C-terminal region of human CD49f.

**Dilution**

WB~~1:1000  
IHC-P~~1:50~100  
FC~~1:10~50

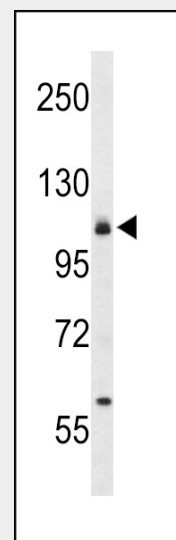
**Format**

Purified polyclonal antibody supplied in PBS with 0.09% (W/V) sodium azide. This antibody is prepared by Saturated Ammonium Sulfate (SAS) precipitation followed by dialysis against PBS.

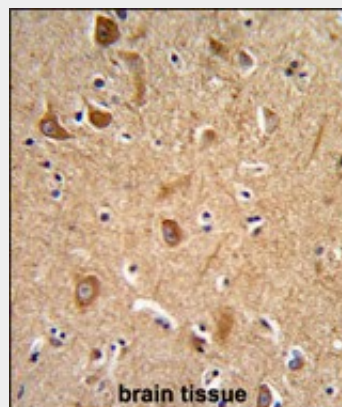
**Storage**

Maintain refrigerated at 2-8°C for up to 2 weeks. For long term storage store at -20°C in small aliquots to prevent freeze-thaw cycles.

**Precautions**



Western blot analysis of CD49f Antibody (C-term) (Cat. #AP9255b) in 293 cell line lysates (35ug/lane). CD49f (arrow) was detected using the purified Pab.



Formalin-fixed and paraffin-embedded human brain tissue reacted with CD49f Antibody (C-term), which was peroxidase-conjugated to the secondary antibody, followed by DAB staining. This data demonstrates the use of this antibody for immunohistochemistry; clinical relevance has not been evaluated.

CD49f Antibody (C-term) is for research use only and not for use in diagnostic or therapeutic procedures.

#### CD49f Antibody (C-term) - Protein Information

**Name** ITGA6

#### Function

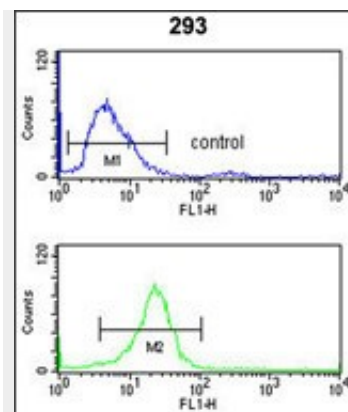
Integrin alpha-6/beta-1 (ITGA6:ITGB1) is a receptor for laminin on platelets (By similarity). Integrin alpha-6/beta-1 (ITGA6:ITGB1) is present in oocytes and is involved in sperm-egg fusion (By similarity). Integrin alpha-6/beta-4 (ITGA6:ITGB4) is a receptor for laminin in epithelial cells and it plays a critical structural role in the hemidesmosome (By similarity). ITGA6:ITGB4 binds to NRG1 (via EGF domain) and this binding is essential for NRG1-ERBB signaling (PubMed:<a href="http://www.uniprot.org/citations/20682778" target="\_blank">20682778</a>). ITGA6:ITGB4 binds to IGF1 and this binding is essential for IGF1 signaling (PubMed:<a href="http://www.uniprot.org/citations/22351760" target="\_blank">22351760</a>). ITGA6:ITGB4 binds to IGF2 and this binding is essential for IGF2 signaling (PubMed:<a href="http://www.uniprot.org/citations/28873464" target="\_blank">28873464</a>).

#### Cellular Location

Cell membrane; Single-pass type I membrane protein. Cell membrane; Lipid-anchor

#### Tissue Location

Integrin alpha-6/beta-4 is predominantly expressed by epithelia. Isoforms containing segment X1 are ubiquitously expressed. Isoforms containing segment X1X2 are expressed in heart, kidney, placenta, colon, duodenum, myoblasts and myotubes, and in a limited number of cell lines; they are always coexpressed with the ubiquitous isoform containing segment X1. In some tissues (e.g Salivary gland), isoforms containing cytoplasmic segment A and isoforms containing segment B are detected while in others, only isoforms containing one cytoplasmic segment are found (segment A in epidermis and segment B in kidney). Processed integrin alpha-6: Expressed at low levels in normal prostate tissue with elevated levels in prostate



CD49f Antibody (C-term) (Cat. #AP9255b) flow cytometry analysis of 293 cells (bottom histogram) compared to a negative control cell (top histogram). FITC-conjugated goat-anti-rabbit secondary antibodies were used for the analysis.

#### CD49f Antibody (C-term) - Background

The CD49f protein product is the integrin alpha chain alpha 6. Integrins are integral cell-surface proteins composed of an alpha chain and a beta chain. A given chain may combine with multiple partners resulting in different integrins. For example, alpha 6 may combine with beta 4 in the integrin referred to as TSP180, or with beta 1 in the integrin VLA-6. Integrins are known to participate in cell adhesion as well as cell-surface mediated signalling.

#### CD49f Antibody (C-term) - References

Kim,T.H., et.al., Mol. Cancer Res. 7 (10), 1605-1612 (2009)  
Eeles,R.A., et.a.l, Nat. Genet. 41 (10), 1116-1121 (2009)

cancer tissue (at protein level)  
(PubMed:15023541)

### **CD49f Antibody (C-term) - Protocols**

Provided below are standard protocols that you may find useful for product applications.

- [Western Blot](#)
- [Blocking Peptides](#)
- [Dot Blot](#)
- [Immunohistochemistry](#)
- [Immunofluorescence](#)
- [Immunoprecipitation](#)
- [Flow Cytometry](#)
- [Cell Culture](#)

### **CD49f Antibody (C-term) - Citations**

- [The clinical pathological significance of Thy1 and CD49f expression in chondrosarcomas.](#)