

C7 Antibody (Center)

Affinity Purified Rabbit Polyclonal Antibody (Pab)

Catalog # AP9262c

Specification

C7 Antibody (Center) - Product Information

Application	WB, IHC-P, FC,E
Primary Accession	P10643
Reactivity	Human
Host	Rabbit
Clonality	Polyclonal
Isotype	Rabbit Ig
Calculated MW	93518
Antigen Region	375-403

C7 Antibody (Center) - Additional Information

Gene ID 730

Other Names

Complement component C7, C7

Target/Specificity

This C7 antibody is generated from rabbits immunized with a KLH conjugated synthetic peptide between 375-403 amino acids from the Central region of human C7.

Dilution

WB~~1:1000
IHC-P~~1:50~100
FC~~1:10~50

Format

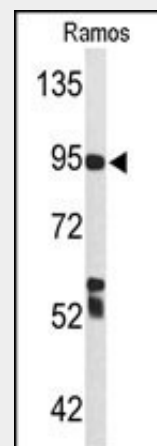
Purified polyclonal antibody supplied in PBS with 0.09% (W/V) sodium azide. This antibody is purified through a protein A column, followed by peptide affinity purification.

Storage

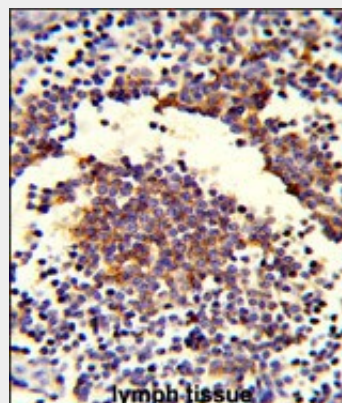
Maintain refrigerated at 2-8°C for up to 2 weeks. For long term storage store at -20°C in small aliquots to prevent freeze-thaw cycles.

Precautions

C7 Antibody (Center) is for research use only and not for use in diagnostic or therapeutic procedures.



Western blot analysis of C7 Antibody (Center) (Cat. #AP9262c) in Ramos cell line lysates (35ug/lane). C7 (arrow) was detected using the purified Pab.



Formalin-fixed and paraffin-embedded human lymph tissue reacted with C7 Antibody (Center), which was peroxidase-conjugated to the secondary antibody, followed by DAB staining. This data demonstrates the use of this antibody for immunohistochemistry; clinical relevance has not been evaluated.

C7 Antibody (Center) - Protein Information

Name C7

Function

Constituent of the membrane attack complex (MAC) that plays a key role in the innate and adaptive immune response by forming pores in the plasma membrane of target cells. C7 serves as a membrane anchor.

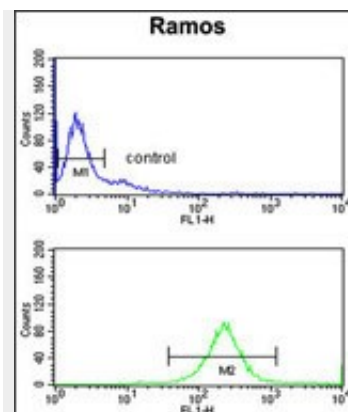
Cellular Location

Secreted.

C7 Antibody (Center) - Protocols

Provided below are standard protocols that you may find useful for product applications.

- [Western Blot](#)
- [Blocking Peptides](#)
- [Dot Blot](#)
- [Immunohistochemistry](#)
- [Immunofluorescence](#)
- [Immunoprecipitation](#)
- [Flow Cytometry](#)
- [Cell Culture](#)



C7 Antibody (Center) (Cat. #AP9262c) flow cytometry analysis of Ramos cells (bottom histogram) compared to a negative control cell (top histogram). FITC-conjugated goat-anti-rabbit secondary antibodies were used for the analysis.

C7 Antibody (Center) - Background

C7 is a component of the complement system. It participates in the formation of Membrane Attack Complex (MAC). People with C7 deficiency are prone to bacterial infection.

C7 Antibody (Center) - References

Davila, S., et al., Genes Immun. 11 (3), 232-238 (2010)
Kuijpers, T.W., et al., Mol. Immunol. 47 (4), 671-677 (2010)
Wheeler, H.E., et al., PLoS Genet. 5 (10), E1000685 (2009)