

**ALG10 Antibody (N-term)**  
**Affinity Purified Rabbit Polyclonal Antibody (Pab)**  
**Catalog # AP9961a**

**Specification**

**ALG10 Antibody (N-term) - Product Information**

Application	<b>WB, IHC-P,E</b>
Primary Accession	<a href="#">Q5BKT4</a>
Other Accession	<a href="#">Q88788</a> , <a href="#">Q3UGP8</a> , <a href="#">Q5I7T1</a>
Reactivity	<b>Human</b>
Predicted	<b>Mouse, Rat</b>
Host	<b>Rabbit</b>
Clonality	<b>Polyclonal</b>
Isotype	<b>Rabbit Ig</b>
Calculated MW	<b>55606</b>
Antigen Region	<b>17-43</b>

**ALG10 Antibody (N-term) - Additional Information**

**Gene ID** 84920

**Other Names**

Dol-P-Glc:Glc(2)Man(9)GlcNAc(2)-PP-Dol  
alpha-1, 2-glucosyltransferase, Alpha-1,  
2-glucosyltransferase ALG10-A,  
Alpha-2-glucosyltransferase ALG10-A,  
Asparagine-linked glycosylation protein 10  
homolog A, ALG10, ALG10A

**Target/Specificity**

This ALG10 antibody is generated from rabbits immunized with a KLH conjugated synthetic peptide between 17-43 amino acids from the N-terminal region of human ALG10.

**Dilution**

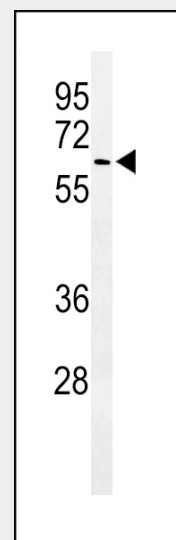
WB~~1:1000  
IHC-P~~1:50~100

**Format**

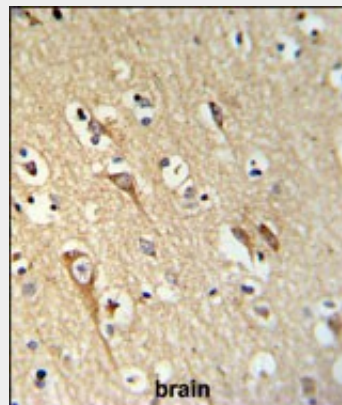
Purified polyclonal antibody supplied in PBS with 0.09% (W/V) sodium azide. This antibody is purified through a protein A column, followed by peptide affinity purification.

**Storage**

Maintain refrigerated at 2-8°C for up to 2 weeks. For long term storage store at -20°C



Western blot analysis of ALG10 Antibody (N-term) (Cat. #AP9961a) in A375 cell line lysates (35ug/lane). ALG10 (arrow) was detected using the purified Pab.



ALG10 Antibody (N-term) (Cat. #AP9961a) IHC analysis in formalin fixed and paraffin embedded brain tissue followed by peroxidase conjugation of the secondary antibody and DAB staining. This data demonstrates the use of the ALG10 Antibody (N-term) for immunohistochemistry. Clinical relevance has not been evaluated.

**ALG10 Antibody (N-term) - Background**

in small aliquots to prevent freeze-thaw cycles.

**Precautions**

ALG10 Antibody (N-term) is for research use only and not for use in diagnostic or therapeutic procedures.

**ALG10 Antibody (N-term) - Protein Information**

**Name** ALG10

**Synonyms** ALG10A

**Function**

Adds the third glucose residue to the lipid-linked oligosaccharide precursor for N-linked glycosylation. Transfers glucose from dolichyl phosphate glucose (Dol-P-Glc) onto the lipid-linked oligosaccharide Glc(2)Man(9)GlcNAc(2)-PP-Dol.

**Cellular Location**

Endoplasmic reticulum membrane;  
Multi-pass membrane protein

ALG10 encodes a membrane-associated protein that adds the third glucose residue to the lipid-linked oligosaccharide precursor for N-linked glycosylation. That is, it transfers the terminal glucose from dolichyl phosphate glucose (Dol-P-Glc) onto the lipid-linked oligosaccharide Glc2Man9GlcNAc(2)-PP-Dol. The rat protein homolog was shown to specifically modulate the gating function of the rat neuronal ether-a-go-go (EAG) potassium ion channel.

**ALG10 Antibody (N-term) - References**

Chapuis, J., et al. Mol. Psychiatry 14(11):1004-1016(2009)  
Seshadri, S., et al. BMC Med. Genet. 8 SUPPL 1, S15 (2007)  
Kupersmidt, S., et al. FASEB J. 17(15):2263-2265(2003)

**ALG10 Antibody (N-term) - Protocols**

Provided below are standard protocols that you may find useful for product applications.

- [Western Blot](#)
- [Blocking Peptides](#)
- [Dot Blot](#)
- [Immunohistochemistry](#)
- [Immunofluorescence](#)
- [Immunoprecipitation](#)
- [Flow Cytometry](#)
- [Cell Culture](#)