

## Prosapip1 Antibody

Catalog # ASC10979

### Specification

#### Prosapip1 Antibody - Product Information

Application	WB, IHC, IF
Primary Accession	<a href="#">O60299</a>
Other Accession	<a href="#">NP_055546</a> , <a href="#">7662176</a>
Reactivity	Human, Mouse, Rat
Host	Rabbit
Clonality	Polyclonal
Isotype	IgG
Application Notes	Prosapip1 antibody can be used for detection of Prosapip1 by Western blot at 1 µg/mL. Antibody can also be used for immunohistochemistry starting at 2.5 µg/mL. For immunofluorescence start at 20 µg/mL.

#### Prosapip1 Antibody - Additional Information

Gene ID **9762**

**Target/Specificity**  
ProSAPiP1;

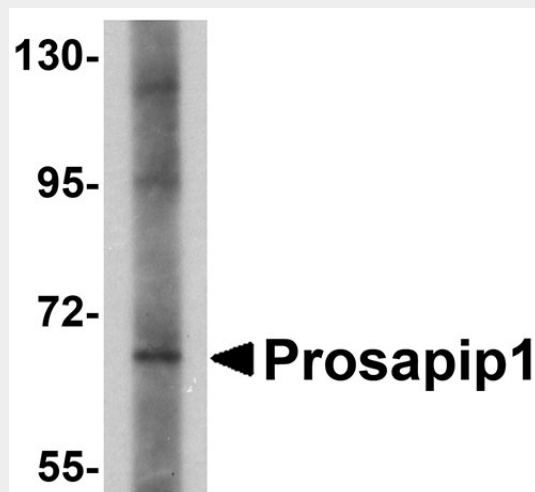
#### Reconstitution & Storage

Prosapip1 antibody can be stored at 4°C for three months and -20°C, stable for up to one year. As with all antibodies care should be taken to avoid repeated freeze thaw cycles. Antibodies should not be exposed to prolonged high temperatures.

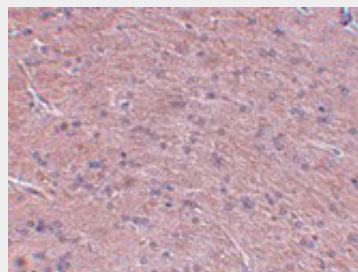
#### Precautions

Prosapip1 Antibody is for research use only and not for use in diagnostic or therapeutic procedures.

#### Prosapip1 Antibody - Protein Information



Western blot analysis of Prosapip1 in SK-N-SH cell lysate with Prosapip1 antibody at 1 µg/mL.



Immunohistochemistry of Prosapip1 in rat brain tissue with Prosapip1 antibody at 2.5 µg/mL.

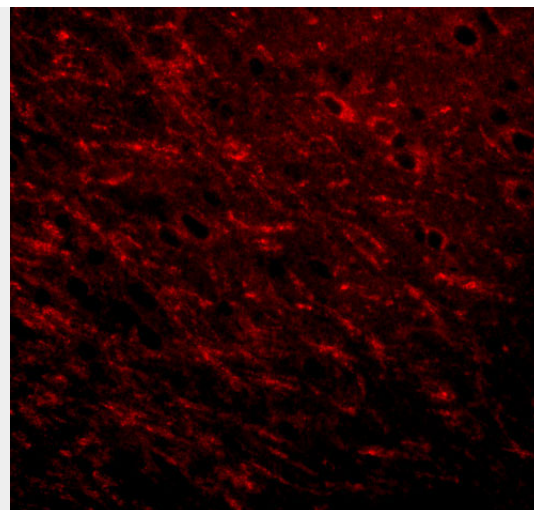
**Name** LZTS3 ([HGNC:30139](#))

#### Function

May be involved in promoting the maturation of dendritic spines, probably via regulating SIPA1L1 levels at the postsynaptic density of synapses.

#### Cellular Location

Cell junction, synapse  
{ECO:0000250|UniProtKB:Q8K1Q4}. Cell junction, synapse, postsynaptic density  
{ECO:0000250|UniProtKB:Q8K1Q4}. Cell projection, dendritic spine  
{ECO:0000250|UniProtKB:Q8K1Q4}. Cell projection, dendrite  
{ECO:0000250|UniProtKB:Q8K1Q4}. Cytoplasm, cytoskeleton  
{ECO:0000250|UniProtKB:Q8K1Q4}. Note=Rather found at excitatory than inhibitory synapses.  
{ECO:0000250|UniProtKB:Q8K1Q4}



Immunofluorescence of Prosapip 1 in rat brain tissue with Prosapip 1 antibody at 20 µg/mL.

#### Prosapip1 Antibody - Protocols

Provided below are standard protocols that you may find useful for product applications.

- [Western Blot](#)
- [Blocking Peptides](#)
- [Dot Blot](#)
- [Immunohistochemistry](#)
- [Immunofluorescence](#)
- [Immunoprecipitation](#)
- [Flow Cytometry](#)
- [Cell Culture](#)

#### Prosapip1 Antibody - Background

Prosapip1 Antibody: Prosapip1 is a binding partner of the postsynaptic density (PSD) protein ProSAP2/Shank3, a major scaffolding protein in excitatory brain synapses. Prosapip1 is thought to bind ProSAP2/Shank3 through ProSAP2/Shank3's PDZ domain and link it in turn to the Spine-associated Rap-Gap (SPAR). Prosapip1 shares significant homology with another PSD protein, PSD-Zip70, with both coding for a Fez1 domain that can be found in a total of four related protein, forming a novel family of scaffolding molecules termed 'Fezzins'. Recent studies show that Prosapip1 can be found in endocrine cells in which it is localized primarily in the hormone-storing compartment of these cells, suggesting that Prosapip1 may have other functions in non-neuronal cells.

#### Prosapip1 Antibody - References

Wendholt D, Spilker C, Schmitt A, et al. ProSAP-interacting protein 1 (ProSAPiP1), a novel protein of the postsynaptic density that links the spine-associated Rap-Gap (SPAR) to the scaffolding protein proSAP2/Shank3. J. Biol. Chem.2006; 281:13805-16.  
Redecker P, Bockmann J, and Bockers TM. Secretory granules of hypophyseal and pancreatic endocrine cells contain proteins of the neuronal postsynaptic density. Cell Tissue Res.2007; 328:49-55.

