

L1TD1 Antibody

Catalog # ASC11358

Specification

L1TD1 Antibody - Product Information

Application	WB
Primary Accession	Q5T7N2
Other Accession	NP_061952 , 157694505
Reactivity	Human
Host	Rabbit
Clonality	Polyclonal
Isotype	IgG
Application Notes	L1TD1 antibody can be used for detection of L1TD1 by Western blot at 1 µg/mL.

L1TD1 Antibody - Additional Information

Gene ID **54596**
Target/Specificity
L1TD1; L1TD1 antibody is predicted to not cross-react with other ECAT protein family members

Reconstitution & Storage

L1TD1 antibody can be stored at 4°C for three months and -20°C, stable for up to one year. As with all antibodies care should be taken to avoid repeated freeze thaw cycles. Antibodies should not be exposed to prolonged high temperatures.

Precautions

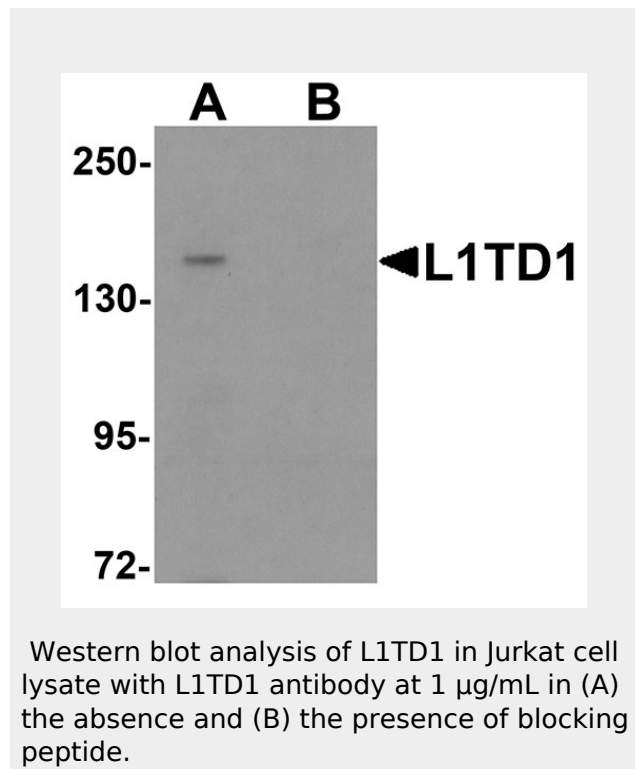
L1TD1 Antibody is for research use only and not for use in diagnostic or therapeutic procedures.

L1TD1 Antibody - Protein Information

Name L1TD1

Synonyms ECAT11

L1TD1 Antibody - Protocols



L1TD1 Antibody - Background

L1TD1 Antibody: L1TD1 (ECAT11) is a member of the family of Embryonic Stem Cell Associated Transcripts (ECAT) that play an important role in stem cell biology. ECAT4 (Nanog) is a master regulator for the maintenance of mESC and hESC. ECAT5 was identified to be Embryonic stem cell expressed Ras (ERas), a Ras-like oncogene that is important in regulating mESC proliferation. ECAT9 (GDF3) is an important factor that helps maintain mESC pluripotency by inhibiting bone morphogenetic protein (BMP) signaling. L1TD1 is highly enriched in undifferentiated hESC and L1TD1 is a target gene of Nanog.

L1TD1 Antibody - References

Iwabuchi KA, Yamakawa T, Sato Y, et al. ECAT11/L1td1 is enriched in ESCs and rapidly activated during iPSC generation, but it is dispensable for the maintenance and induction of pluripotency. PLoS One. 2011; 6:e20461.

Provided below are standard protocols that you may find useful for product applications.

- [Western Blot](#)
- [Blocking Peptides](#)
- [Dot Blot](#)
- [Immunohistochemistry](#)
- [Immunofluorescence](#)
- [Immunoprecipitation](#)
- [Flow Cytometry](#)
- [Cell Culture](#)

Mitsui K, Tokuzawa Y, Itoh H, et al. The homeoprotein Nanog is required for maintenance of pluripotency in mouse epiblast and ES cells. *Cell* 2003; 113:631-42

Takahashi K, Mitsui K, Yamanaka S. Role of ERas in promoting tumour-like properties in mouse embryonic stem cells. *Nature* 2003; 423:541-5

Wong RC, Ibrahim A, Fong H, et al. L1TD1 is a marker for undifferentiated human embryonic stem cells. *PLoS One* 2011;6:e19355.