

## SLAIN1 Antibody

Catalog # ASC11433

### Specification

#### SLAIN1 Antibody - Product Information

Application	WB, IF
Primary Accession	<a href="#">Q8ND83</a>
Other Accession	<a href="#">NP_002456</a> , <a href="#">338968860</a>
Reactivity	Human, Mouse, Rat
Host	Rabbit
Clonality	Polyclonal
Isotype	IgG
Application Notes	SLAIN1 antibody can be used for detection of SLAIN1 by Western blot at 1 µg/mL. Antibody can also be used for immunofluorescence starting at 2.5 µg/mL. For immunofluorescence start at 20 µg/mL.

#### SLAIN1 Antibody - Additional Information

**Gene ID** 122060  
**Target/Specificity**  
SLAIN1; At least three isoforms of SLAIN1 are known to exist; this antibody will detect all three. SLAIN1 antibody is predicted not to cross-react with SLAIN2.

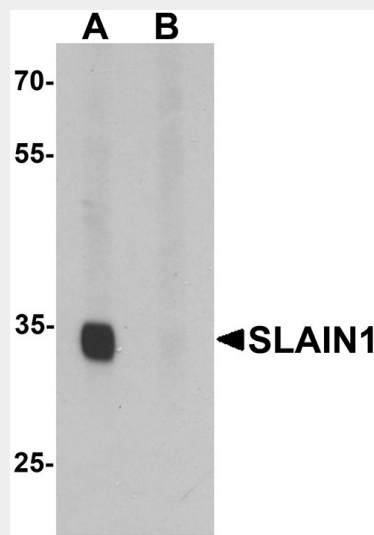
#### Reconstitution & Storage

SLAIN1 antibody can be stored at 4°C for three months and -20°C, stable for up to one year. As with all antibodies care should be taken to avoid repeated freeze thaw cycles. Antibodies should not be exposed to prolonged high temperatures.

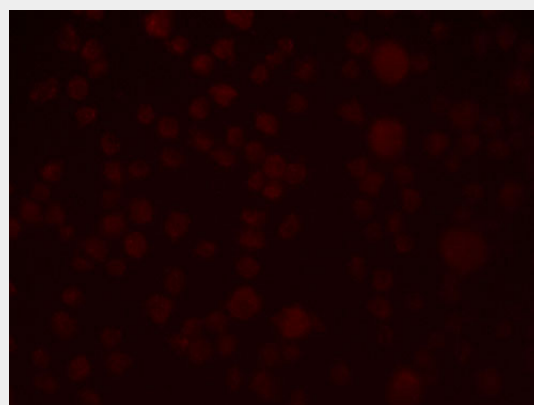
#### Precautions

SLAIN1 Antibody is for research use only and not for use in diagnostic or therapeutic procedures.

#### SLAIN1 Antibody - Protein Information



Western blot analysis of SLAIN1 in A549 cell lysate with SLAIN1 antibody at 1 µg/mL in (A) the absence and (B) the presence of blocking peptide.



Immunofluorescence of SLAIN1 in A549 cells with SLAIN1 antibody at 2.5 µg/mL.

#### SLAIN1 Antibody - Background

SLAIN1 Antibody: SLAIN1 is a novel stem cell protein that was identified by transcriptional profiling of mouse and human embryonic stem cells (ESCs) and is expressed at the stem cell and epiblast stages. Unlike its more widely expressed homolog SLAIN2, SLAIN1 was found

**Name** SLAIN1

**Synonyms** C13orf32

**Function**

Microtubule plus-end tracking protein that might be involved in the regulation of cytoplasmic microtubule dynamics, microtubule organization and microtubule elongation.

**Cellular Location**

Cytoplasm, cytoskeleton. Note=Colocalizes with microtubules Detected at the plus end of growing microtubules

**Tissue Location**

Expressed in embryonic stem cells (PubMed:16546155). Expressed in brain (PubMed:21646404)

to be expressed in the epiblast, nervous system, tailbud and somites of the developing mouse embryo later experiments suggested that SLAIN1 may play a role in the development of the nervous system as well as in the morphogenesis of several embryonic structures.

**SLAIN1 Antibody - References**

Hirst CE, Ng ES, Azzola L, et al. Transcriptional profiling of mouse and human ES cells identifies SLAIN1, a novel stem cell gene. Dev. Biol. 2006; 293:90-103.

Hirst CE, Lim SM, Pereira LA, et al. Expression from a betageo gene trap in the Slain1 gene locus is predominantly associated with the developing nervous system. Int. J. Dev. Biol. 2010; 54:1383-8.

**SLAIN1 Antibody - Protocols**

Provided below are standard protocols that you may find useful for product applications.

- [Western Blot](#)
- [Blocking Peptides](#)
- [Dot Blot](#)
- [Immunohistochemistry](#)
- [Immunofluorescence](#)
- [Immunoprecipitation](#)
- [Flow Cytometry](#)
- [Cell Culture](#)