

TLX1 Antibody

Catalog # ASC11661

Specification

TLX1 Antibody - Product Information

Application **WB, IHC**
Primary Accession [P31314](#)
Other Accession [NP_005512](#),
[5031757](#)
Reactivity **Human, Mouse, Rat**
Host **Rabbit**
Clonality **Polyclonal**
Isotype **IgG**
Calculated MW **Predicted: 36 kDa**

Observed: 35 kDa
Application Notes **TLX1 antibody can be used for detection of TLX1 by Western blot at 1 - 2 µg/mL.**

TLX1 Antibody - Additional Information

Gene ID **3195**

Target/Specificity

TLX1; Multiple isoforms of TLX1 exist due to alternative splicing events. TLX1 antibody is predicted to not cross-react with other TLX proteins.

Reconstitution & Storage

TLX1 antibody can be stored at 4°C for three months and -20°C, stable for up to one year.

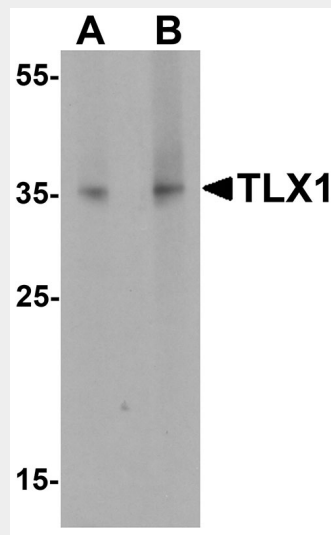
Precautions

TLX1 Antibody is for research use only and not for use in diagnostic or therapeutic procedures.

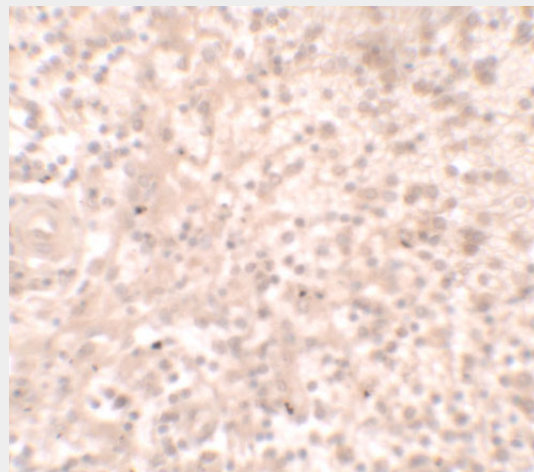
TLX1 Antibody - Protein Information

Name TLX1

Synonyms HOX11, TCL3



Western blot analysis of TLX1 in mouse spleen tissue lysate with TLX1 antibody at (A) 1 µg/mL and (B) 2 µg/mL.



Immunohistochemistry of TLX1 in human spleen tissue with TLX1 antibody at 2.5 µg/ml.

TLX1 Antibody - Background

TLX1 Antibody: The Hox proteins play a role in patterns of embryonic development and cellular differentiation by regulating downstream target genes. TLX1, also called

Function

Controls the genesis of the spleen. Binds to the DNA sequence 5'-GGCGGTAAGTGG-3'.

Cellular Location

Nucleus.

TLX1 Antibody - Protocols

Provided below are standard protocols that you may find useful for product applications.

- [Western Blot](#)
- [Blocking Peptides](#)
- [Dot Blot](#)
- [Immunohistochemistry](#)
- [Immunofluorescence](#)
- [Immunoprecipitation](#)
- [Flow Cytometry](#)
- [Cell Culture](#)

homeobox11 (HOX11), as it is located outside of the four mammalian Hox clusters, is a DNA-binding nuclear transcription factor. TLX1 encodes a homeobox-domain containing protein and is containing a glycine and proline-rich amino terminus. TLX1 is required for maintenance of the developing spleen and cell survival. TLX1 is highly expressed in T-cell leukemia and lymphoid neoplasias as a result of translocation. TLX1-deficient mice have no spleen.

TLX1 Antibody - References

Dear TN, Sanchez-Garcia I, and Rabbitts TH, et al. The Hox11 gene encodes a DNA-binding nuclear transcription factor belonging to a distinct family of homeobox genes. Proc. Natl. Acad. Sci. USA 1993; 90:4431-5.

Dube ID, Kamel-Reid S, Yuan CC, et al. A novel human homeobox gene lies at the chromosome 10 breakpoint in lymphoid neoplasias with chromosomal translocation t (10;14). Blood 1991; 78:2996-3003.

Hatano M, Roberts CW, Minden M, et al. Deregulation of a homeobox gene, Hox11, by the t (10;14) in T cell leukemia. Science 1991; 253:79-82.

Roberts CW, Shutter JR, Korsmeyer SJ et al. Hox11 controls the genesis of the spleen. Nature 1994; 368:747-9.