

APPBP2 Antibody

Catalog # ASC11724

Specification

APPBP2 Antibody - Product Information

Application **WB, IHC, IF**
 Primary Accession [Q92624](#)
 Other Accession [NP_006371](#),
[18104962](#)
 Reactivity **Human, Mouse, Rat**
 Host **Rabbit**
 Clonality **Polyclonal**
 Isotype **IgG**
 Calculated MW **Predicted: 64 kDa**

Application Notes

Observed: 57 kDa
KDa
 APPBP2 antibody can be used for detection of APPBP2 by Western blot at 0.5 - 1 µg/ml. Antibody can also be used for Immunohistochemistry starting at 5 µg/mL. For immunofluorescence start at 20 µg/mL.

APPBP2 Antibody - Additional Information

Gene ID **10513**

Target/Specificity

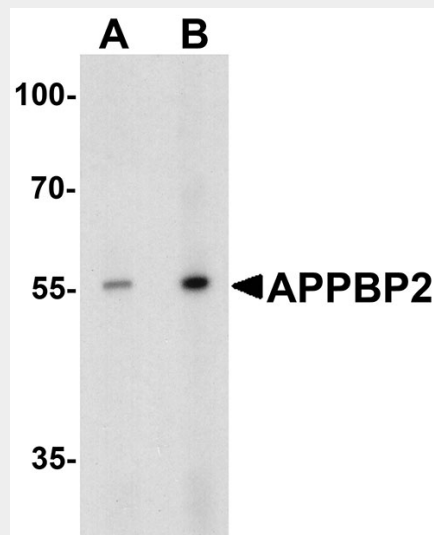
APPBP2; APPBP2 antibody is human, mouse and rat reactive. At least two isoforms of APPBP2 are known to exist; this antibody will detect both isoforms.

Reconstitution & Storage

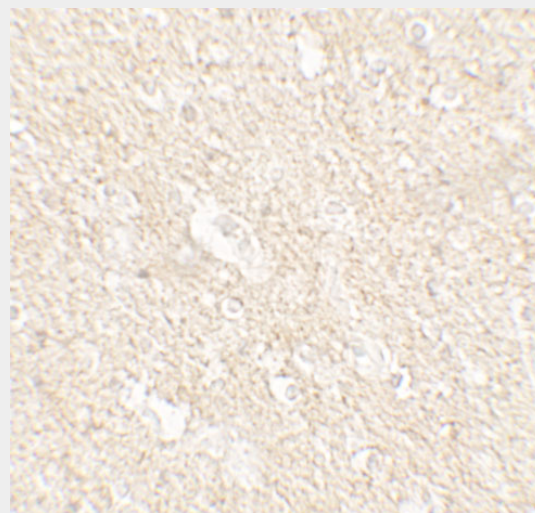
APPBP2 antibody can be stored at 4°C for three months and -20°C, stable for up to one year.

Precautions

APPBP2 Antibody is for research use only and not for use in diagnostic or therapeutic procedures.



Western blot analysis of APPBP2 in human brain tissue lysate with APPBP2 antibody at (A) 0.5 and (B) 1 µg/ml.



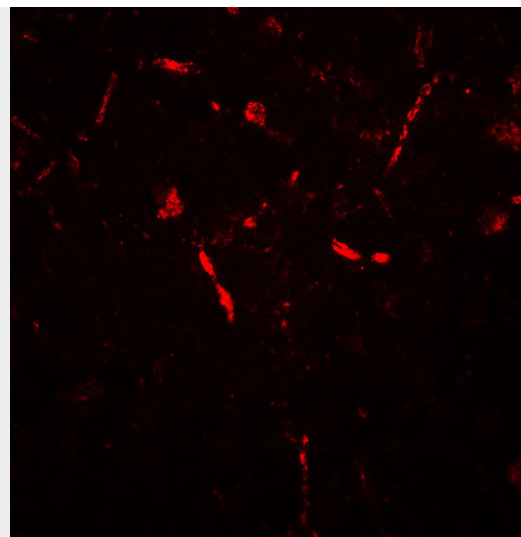
Immunohistochemistry of APPBP2 in human brain tissue with APPBP2 antibody at 5 µg/mL.

APPBP2 Antibody - Protein Information**Name** APPBP2**Synonyms** KIAA0228, PAT1**Function**

May play a role in intracellular protein transport. May be involved in the translocation of APP along microtubules toward the cell surface.

Cellular Location

Nucleus. Cytoplasm, cytoskeleton.
Membrane; Peripheral membrane protein
Note=Associated with membranes and microtubules



Immunofluorescence of APPBP2 in human brain tissue with APPBP2 antibody at 20 $\mu\text{g/mL}$.

APPBP2 Antibody - Protocols

Provided below are standard protocols that you may find useful for product applications.

- [Western Blot](#)
- [Blocking Peptides](#)
- [Dot Blot](#)
- [Immunohistochemistry](#)
- [Immunofluorescence](#)
- [Immunoprecipitation](#)
- [Flow Cytometry](#)
- [Cell Culture](#)

APPBP2 Antibody - Background

The amyloid beta precursor protein (cytoplasmic tail) binding protein 2 (APPBP2), also known as PAT1, interacts with microtubules and is functionally associated with beta-amyloid precursor protein transport and/or processing (1). The beta-amyloid precursor protein is a cell surface protein with signal-transducing properties, and it is thought to play a role in the pathogenesis of Alzheimer's disease (2). APPBP2 has been found to be highly expressed in breast cancer (3).

APPBP2 Antibody - References

Zheng P, Eastman J, Vande Pol S, et al. PAT1, a microtubule-interacting protein, recognizes the basolateral sorting signal of amyloid precursor protein. *Proc. Natl. Acad. Sci. USA* 1994; 95:14745-50.

Selkoe DJ. Cell biology of the amyloid beta-protein precursor and the mechanism of Alzheimer's disease. *Annu. Rev. Cell Biol.* 1994; 10:373-403.

Li J, Yang Y, Peng Y, et al. Oncogenic properties of PPM1D located within a breast cancer amplification epicenter at 17q23. *Nat. Genet.* 2002; 31:133-4.