

GABA-A Receptor Delta Antibody

GABA A Receptor Delta Antibody, Clone S151-3

Catalog # ASM10221

Specification

GABA-A Receptor Delta Antibody - Product Information

Application **ICC/IF, WB**
Primary Accession [P18506](#)
Other Accession [NP_058985.1](#)
Host **Mouse**
Isotype **IgG2a**
Reactivity **Human, Mouse, Rat**
Clonality **Monoclonal**

Description

Mouse Anti-Rat GABA-A Receptor Delta
Monoclonal IgG2a

Target/Specificity

Detects ~55kDa.

Other Names

GABAA-RD Antibody, Gabrd Antibody,
MGC105467 Antibody

Immunogen

Synthetic peptide amino acids 15-34 of rat
GABA-A-R-Delta

Purification

Protein G Purified

Storage **-20°C**

Storage Buffer

PBS pH7.4, 50% glycerol, 0.09% sodium
azide

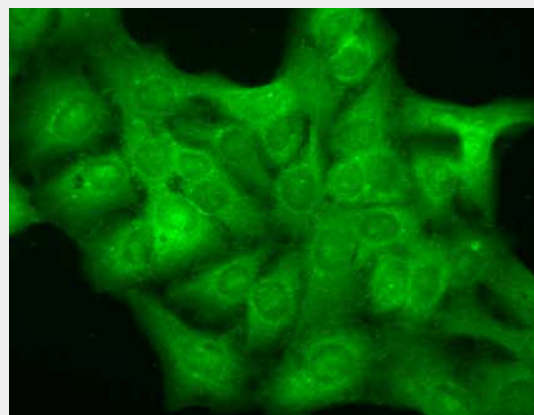
Shipping **Blue Ice or 4°C**
Temperature

Certificate of Analysis

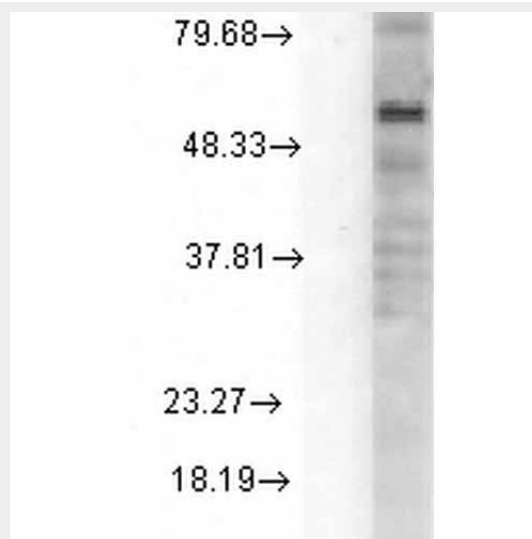
2 µg/ml of SMC-345 was sufficient for
detection of Delta1 GABA-A receptor in 10
µg of rat brain lysate by colorimetric
immunoblot analysis using goat anti-mouse
IgG:HRP as the secondary antibody.

Cellular Localization

Cell Membrane | Cell Junction | Synapse |
Postsynaptic Cell Membrane



Immunocytochemistry/Immunofluorescence
analysis using Mouse Anti-GABA A Receptor
Monoclonal Antibody, Clone S151-3
(ASM10221). Tissue: HaCaT cells. Species:
Human. Fixation: Cold 100% methanol for 10
minutes at -20°C. Primary Antibody: Mouse
Anti-GABA A Receptor Monoclonal Antibody
(ASM10221) at 1:100 for 1 hour at RT.
Secondary Antibody: FITC Goat Anti-Mouse
(green) at 1:50 for 1 hour at RT. Localization:
Diffuse cytoplasm and dull nuclei.



Western Blot analysis of Rat Cell line lysates
showing detection of GABA A Receptor
protein using Mouse Anti-GABA A Receptor
Monoclonal Antibody, Clone S151-3

GABA-A Receptor Delta Antibody - Protocols

Provided below are standard protocols that you may find useful for product applications.

- [Western Blot](#)
- [Blocking Peptides](#)
- [Dot Blot](#)
- [Immunohistochemistry](#)
- [Immunofluorescence](#)
- [Immunoprecipitation](#)
- [Flow Cytometry](#)
- [Cell Culture](#)

(ASM10221). Load: 15 µg. Block: 1.5% BSA for 30 minutes at RT. Primary Antibody: Mouse Anti-GABA A Receptor Monoclonal Antibody (ASM10221) at 1:1000 for 2 hours at RT. Secondary Antibody: Sheep Anti-Mouse IgG: HRP for 1 hour at RT.

GABA-A Receptor Delta Antibody - Background

The GABA-A receptor is a member of the superfamily of fast acting ligand-gated ion channels. The individual subunits of these receptors have similar sequences and structural features (1). GABA-A receptors are the major fast inhibitory neurotransmitter gated ion channels in the brain (2).

GABA-A Receptor Delta Antibody - References

1. Bracamontes J.R. and Steinbach J.H. (2008) J Bio Chem. 283: 26128-26136.
2. Macdonald R.L., Olsen R.W. (1993) Annu Rev Neurosci. 17: 569-602.