

**Beclin 2 Antibody**  
Catalog # ASM10492**Specification****Beclin 2 Antibody - Product Information**

Application **ICC/IF, WB**  
Primary Accession [A8MW95](#)  
Other Accession [NP\\_001277622.1](#)  
Host **Rabbit**  
Reactivity **Human, Rat**  
Clonality **Polyclonal**

**Description**

Rabbit Anti-Human Beclin 2 Polyclonal

**Target/Specificity**

Detects ~48 kDa.

**Other Names**BECN1P1 Antibody, Beclin-1  
autophagy-related pseudogene 1 Antibody,  
BECN2 Antibody, Beclin-2 Antibody,  
BECN1L1 Antibody, Beclin-1-like protein 1  
Antibody,**Immunogen**Synthetic peptide from the C-terminal of  
Human Beclin 2 (aa. 338-349)**Purification**

Peptide Affinity Purified

Storage **-20°C****Storage Buffer**

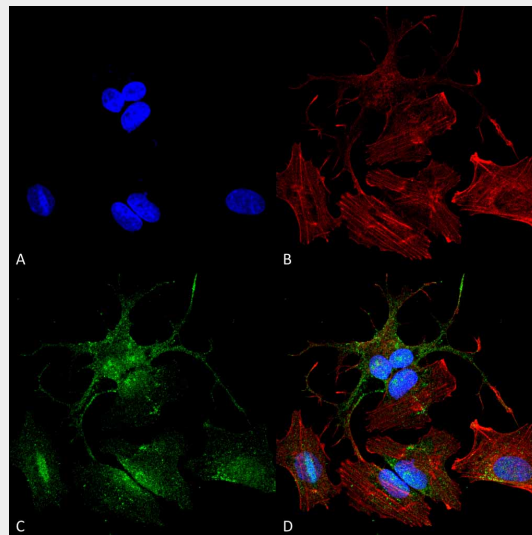
PBS, 50% glycerol, 0.09% sodium azide

Shipping **Blue Ice or 4°C**  
Temperature**Certificate of Analysis**A 1:1000 dilution of SPC-603 was sufficient  
for detection of Beclin 2 in 15 µg of Human  
HeLa Cell Lysates by ECL immunoblot  
analysis using goat anti-rabbit IgG:HRP as  
the secondary antibody.**Cellular Localization**

Cytoplasm

**Beclin 2 Antibody - Protocols**

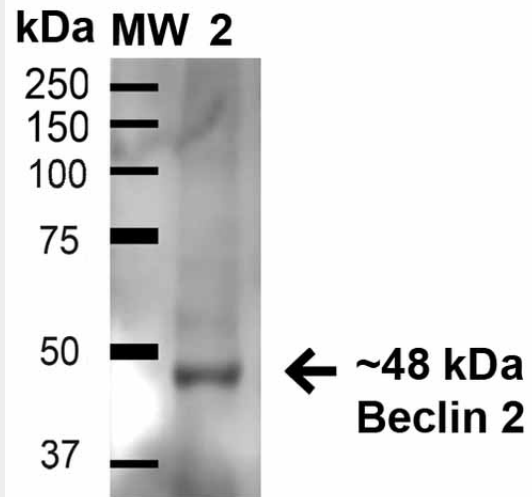
Provided below are standard protocols that you



Immunocytochemistry/Immunofluorescence analysis using Rabbit Anti-Beclin 2 Polyclonal Antibody (ASM10492). Tissue: Neuroblastoma cell line (SK-N-BE). Species: Human. Fixation: 4% Formaldehyde for 15 min at RT. Primary Antibody: Rabbit Anti-Beclin 2 Polyclonal Antibody (ASM10492) at 1:100 for 60 min at RT. Secondary Antibody: Goat Anti-Mouse ATTO 488 at 1:200 for 60 min at RT. Counterstain: Phalloidin Texas Red F-Actin stain; DAPI (blue) nuclear stain at 1:1000, 1:5000 for 60 min at RT, 5 min at RT. Localization: Cytoplasm. Magnification: 60X. (A) DAPI (blue) nuclear stain (B) Phalloidin Texas Red F-Actin stain (C) Beclin 2 Antibody (D) Composite.

may find useful for product applications.

- [Western Blot](#)
- [Blocking Peptides](#)
- [Dot Blot](#)
- [Immunohistochemistry](#)
- [Immunofluorescence](#)
- [Immunoprecipitation](#)
- [Flow Cytometry](#)
- [Cell Culture](#)



Western blot analysis of Rat Liver cell lysates showing detection of 48.1 kDa Beclin 2 protein using Rabbit Anti-Beclin 2 Polyclonal Antibody (ASM10492). Lane 1: Molecular Weight Ladder (MW). Lane 2: Rat Liver cell lysates. Load: 15  $\mu$ g. Block: 5% Skim Milk in 1X TBST. Primary Antibody: Rabbit Anti-Beclin 2 Polyclonal Antibody (ASM10492) at 1:1000 for 1 hour at RT. Secondary Antibody: Goat Anti-Rabbit HRP at 1:2000 for 60 min at RT. Color Development: ECL solution for 6 min in RT. Predicted/Observed Size: 48.1 kDa.

### Beclin 2 Antibody - Background

Beclin 2 is a novel coiled-coil protein related to the autophagic Beclin 1 protein. It is thought to interact with Bcl-2, an anti-apoptotic protein, and is believed to function in autophagy. It has also been found to mediate G protein-coupled receptor (GPCR) degradation (1).

### Beclin 2 Antibody - References

1. He C., et al. (2013) Cell. 154(5): 1085-1099.