

Choline Acetyltransferase Antibody Catalog # ASM10560

Specification

Choline Acetyltransferase Antibody - Product Information

Application **ICC/IF, WB**
Primary Accession [P28329](#)
Other Accession [NP_001136401.1](#)
Host **Rabbit**
Reactivity **Human**
Clonality **Polyclonal**

Description

Rabbit Anti-Human Choline
Acetyltransferase Polyclonal

Target/Specificity

Predicted molecular weight at ~82.5kDa.
Observed molecular weights between
68-70kDa.

Other Names

CHAT_Human Antibody, Acetyl CoA choline
O Acetyltransferase Antibody, Choline
Acetylase Antibody, CLAT_Human Antibody,
CMS1A Antibody

Immunogen

Synthetic peptide from the N-terminal to
the mid-protein of human Choline
O-Acetyltransferase

Purification

Peptide Affinity Purified

Storage **-20°C**

Storage Buffer

PBS, 50% glycerol, 0.09% sodium azide

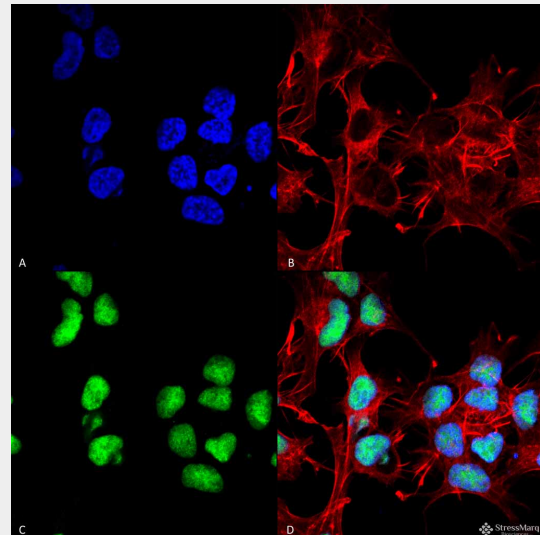
Shipping **Blue Ice or 4°C**
Temperature

Certificate of Analysis

A 1:1000 dilution of SPC-706 was sufficient
for detection of Choline Acetyltransferase
on mouse brain lysates using Goat
anti-rabbit IgG:HRP as the secondary
antibody.

Cellular Localization

Cytoplasm | Cytosol | Mitochondrion |
Nucleus

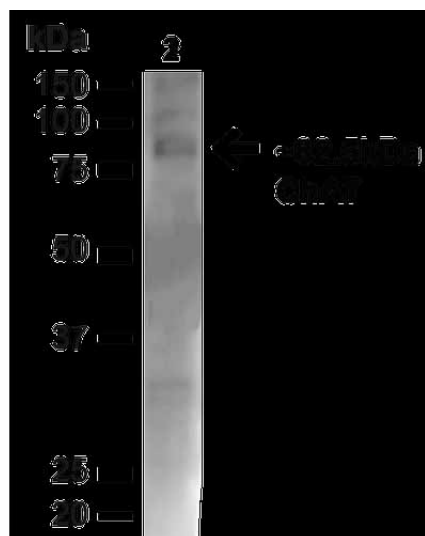


Immunocytochemistry/Immunofluorescence analysis using Rabbit Anti-Choline Acetyltransferase Polyclonal Antibody (ASM10560). Tissue: Neuroblastoma cell line (SK-N-BE). Species: Human. Fixation: 4% Formaldehyde for 15 min at RT. Primary Antibody: Rabbit Anti-Choline Acetyltransferase Polyclonal Antibody (ASM10560) at 1:100 for 60 min at RT. Secondary Antibody: Goat Anti-Rabbit ATTO 488 at 1:100 for 60 min at RT. Counterstain: Phalloidin Texas Red F-Actin stain; DAPI (blue) nuclear stain at 1:1000, 1:5000 for 60min RT, 5min RT. Localization: Nucleus. Magnification: 60X. (A) DAPI (blue) nuclear stain (B) Phalloidin Texas Red F-Actin stain (C) Choline Acetyltransferase Antibody (D) Composite.

Choline Acetyltransferase Antibody - Protocols

Provided below are standard protocols that you may find useful for product applications.

- [Western Blot](#)
- [Blocking Peptides](#)
- [Dot Blot](#)
- [Immunohistochemistry](#)
- [Immunofluorescence](#)
- [Immunoprecipitation](#)
- [Flow Cytometry](#)
- [Cell Culture](#)



Western blot analysis of Mouse Brain showing detection of ~82.5kDa Choline Acetyltransferase protein using Rabbit Anti-Choline Acetyltransferase Polyclonal Antibody (ASM10560). Lane 1: MW Ladder. Lane 2: Mouse Brain (20 µg). Load: 20 µg. Block: 5% milk + TBST for 1 hour at RT. Primary Antibody: Rabbit Anti-Choline Acetyltransferase Polyclonal Antibody (ASM10560) at 1:1000 for 1 hour at RT. Secondary Antibody: Goat Anti-Rabbit: HRP at 1:2000 for 1 hour at RT. Color Development: TMB solution for 12 min at RT. Predicted/Observed Size: ~82.5kDa.

Choline Acetyltransferase Antibody - Background

Acetylcholine (ACh) is a common neurotransmitter for motoneurons, preganglionic autonomic neurons, postganglionic parasympathetic neurons, a variety of brain regions and some emerging neuron-like stem cells. The metabolism of ACh is relatively simple, involving only two enzymes: choline acetyltransferase (ChAT) for synthesis and acetylcholinesterase (AChE) for degradation. Further, acetylcholine has little function in neurons other than neurotransmission and seems to be neuron specific. It seems that only cholinergic neurons have significant amounts of ChAT making anti-choline acetyltransferase a useful specific marker. ChAT is a valuable marker for diseases associated with decreased cholinergic function such as Schizophrenia, Alzheimer disease and Down syndrome (1-3).

Choline Acetyltransferase Antibody - References

1. Houser C.R., Crawford G.D., Barber R.P., Salvaterra P.M., Vaughn J.E. (1983) Brain Research. 266(1): 97-119.
2. Karson C.N., Casanova M.F., Kleinman J.E.m Griffin W.S. (1993) Am J Psychiatry. 150: 454-459.
3. Baskins D.S., et al. (1999) Arch Neurol. 56: 1121-1123.