

CD38 Antibody (monoclonal) (M02)

Mouse monoclonal antibody raised against a partial recombinant CD38.

Catalog # AT1436a

Specification

CD38 Antibody (monoclonal) (M02) - Product Information

Application	IF, WB, E
Primary Accession	P28907
Other Accession	BC007964
Reactivity	Human
Host	mouse
Clonality	Monoclonal
Isotype	IgG1 Kappa
Calculated MW	34328

CD38 Antibody (monoclonal) (M02) - Additional Information

Gene ID 952

Other Names

ADP-ribosyl cyclase/cyclic ADP-ribose hydrolase 1, 2'-phospho-ADP-ribose cyclase, 2'-phospho-ADP-ribose cyclase/2'-phospho-cyclic-ADP-ribose transferase, 2'-phospho-cyclic-ADP-ribose transferase, ADP-ribosyl cyclase 1, ADPRC 1, Cyclic ADP-ribose hydrolase 1, cADPr hydrolase 1, T10, CD38, CD38

Target/Specificity

CD38 (AAH07964, 201 a.a. ~ 300 a.a)
partial recombinant protein with GST tag.
MW of the GST tag alone is 26 KDa.

Dilution

WB~~1:500~1000

Format

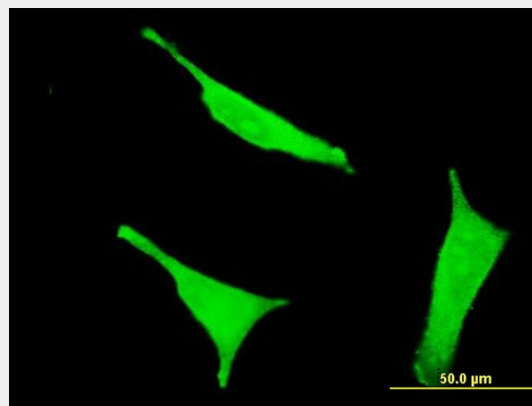
Clear, colorless solution in phosphate buffered saline, pH 7.2 .

Storage

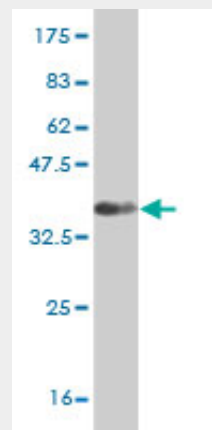
Store at -20°C or lower. Aliquot to avoid repeated freezing and thawing.

Precautions

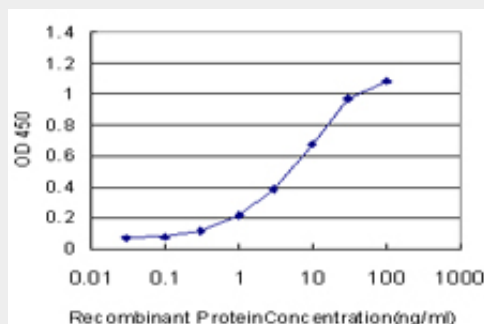
CD38 Antibody (monoclonal) (M02) is for research use only and not for use in



Immunofluorescence of monoclonal antibody to CD38 on HeLa cell . [antibody concentration 10 ug/ml]



Antibody Reactive Against Recombinant Protein.Western Blot detection against Immunogen (36.41 KDa) .



Detection limit for recombinant GST tagged

diagnostic or therapeutic procedures.

CD38 is approximately 0.3ng/ml as a capture antibody.

CD38 Antibody (monoclonal) (M02) - Protocols

Provided below are standard protocols that you may find useful for product applications.

- [Western Blot](#)
- [Blocking Peptides](#)
- [Dot Blot](#)
- [Immunohistochemistry](#)
- [Immunofluorescence](#)
- [Immunoprecipitation](#)
- [Flow Cytometry](#)
- [Cell Culture](#)

CD38 Antibody (monoclonal) (M02) - Background

CD38 is a novel multifunctional ectoenzyme widely expressed in cells and tissues especially in leukocytes. CD38 also functions in cell adhesion, signal transduction and calcium signaling.

CD38 Antibody (monoclonal) (M02) - References

Mouse embryonic fibroblasts from CD38 knockout mice are resistant to oxidative stresses through inhibition of reactive oxygen species production and Ca(2+) overload. Ge Y, et al. Biochem Biophys Res Commun, 2010 Aug 20. PMID 20638362. Two genetic variants of CD38 in subjects with autism spectrum disorder and controls. Munesue T, et al. Neurosci Res, 2010 Jun. PMID 20435366. New genetic associations detected in a host response study to hepatitis B vaccine. Davila S, et al. Genes Immun, 2010 Apr. PMID 20237496. CD38/CD31 interactions activate genetic pathways leading to proliferation and migration in chronic lymphocytic leukemia cells. Deaglio S, et al. Mol Med, 2010 Mar. PMID 19956559. Genome-wide association study identifies common variants at four loci as genetic risk factors for Parkinson's disease. Satake W, et al. Nat Genet, 2009 Dec. PMID 19915576.