

CHML Antibody (monoclonal) (M03)
Mouse monoclonal antibody raised against a partial recombinant CHML.
Catalog # AT1520a

Specification

CHML Antibody (monoclonal) (M03) - Product Information

Application	WB, E
Primary Accession	P26374
Other Accession	NM_001821
Reactivity	Human
Host	mouse
Clonality	Monoclonal
Isotype	IgG2a Kappa
Calculated MW	74071

CHML Antibody (monoclonal) (M03) - Additional Information

Gene ID 1122

Other Names

Rab proteins geranylgeranyltransferase component A 2, Choroideremia-like protein, Rab escort protein 2, REP-2, CHML, REP2

Target/Specificity

CHML (NP_001812, 68 a.a. ~ 177 a.a)
partial recombinant protein with GST tag.
MW of the GST tag alone is 26 KDa.

Dilution

WB~~1:500~1000

Format

Clear, colorless solution in phosphate buffered saline, pH 7.2 .

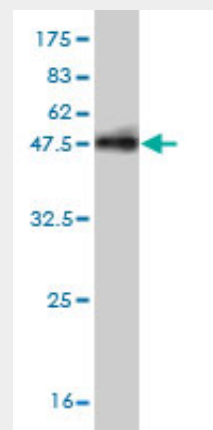
Storage

Store at -20°C or lower. Aliquot to avoid repeated freezing and thawing.

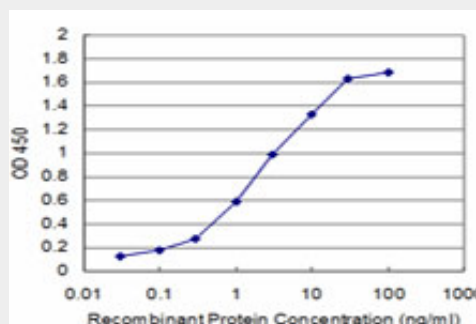
Precautions

CHML Antibody (monoclonal) (M03) is for research use only and not for use in diagnostic or therapeutic procedures.

CHML Antibody (monoclonal) (M03) - Protocols



Antibody Reactive Against Recombinant Protein. Western Blot detection against Immunogen (37.84 KDa) .



Detection limit for recombinant GST tagged CHML is approximately 0.1ng/ml as a capture antibody.

CHML Antibody (monoclonal) (M03) - Background

The product of the CHML gene supports geranylgeranylation of most Rab proteins and may substitute for REP-1 in tissues other than retina. CHML is localized close to the gene for Usher syndrome type II.

CHML Antibody (monoclonal) (M03) - References

Follow-up examination of linkage and

Provided below are standard protocols that you may find useful for product applications.

- [Western Blot](#)
- [Blocking Peptides](#)
- [Dot Blot](#)
- [Immunohistochemistry](#)
- [Immunofluorescence](#)
- [Immunoprecipitation](#)
- [Flow Cytometry](#)
- [Cell Culture](#)

association to chromosome 1q43 in multiple sclerosis. McCauley JL, et al. Genes Immun, 2009 Oct. PMID 19626040. Identification of a novel asthma susceptibility gene on chromosome 1qter and its functional evaluation. White JH, et al. Hum Mol Genet, 2008 Jul 1. PMID 18344558. Identification of intrahepatic cholangiocarcinoma related genes by comparison with normal liver tissues using expressed sequence tags. Wang AG, et al. Biochem Biophys Res Commun, 2006 Jul 7. PMID 16712791. The DNA sequence and biological annotation of human chromosome 1. Gregory SG, et al. Nature, 2006 May 18. PMID 16710414. Diversification of transcriptional modulation: large-scale identification and characterization of putative alternative promoters of human genes. Kimura K, et al. Genome Res, 2006 Jan. PMID 16344560.