

JPH1 Antibody (monoclonal) (M04)

Mouse monoclonal antibody raised against a partial recombinant JPH1.

Catalog # AT2584a

Specification

JPH1 Antibody (monoclonal) (M04) - Product Information

Application	WB, E
Primary Accession	Q9HDC5
Other Accession	NM_020647
Reactivity	Human
Host	mouse
Clonality	Monoclonal
Isotype	IgG2a Kappa
Calculated MW	71686

JPH1 Antibody (monoclonal) (M04) - Additional Information

Gene ID 56704

Other Names

Junctophilin-1, JP-1, Junctophilin type 1, JPH1, JP1

Target/Specificity

JPH1 (NP_065698, 501 a.a. ~ 579 a.a) partial recombinant protein with GST tag. MW of the GST tag alone is 26 KDa.

Dilution

WB ~ 1:500 ~ 1000

Format

Clear, colorless solution in phosphate buffered saline, pH 7.2 .

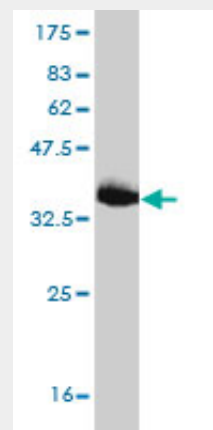
Storage

Store at -20°C or lower. Aliquot to avoid repeated freezing and thawing.

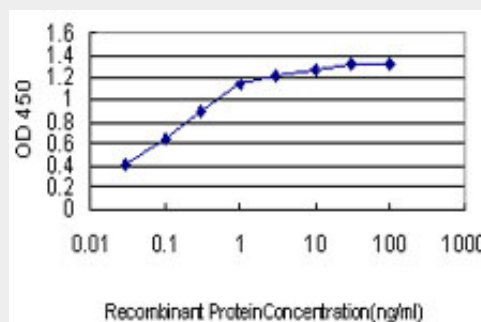
Precautions

JPH1 Antibody (monoclonal) (M04) is for research use only and not for use in diagnostic or therapeutic procedures.

JPH1 Antibody (monoclonal) (M04) - Protocols



Antibody Reactive Against Recombinant Protein. Western Blot detection against Immunogen (34.43 KDa) .



Detection limit for recombinant GST tagged JPH1 is approximately 0.03ng/ml as a capture antibody.

JPH1 Antibody (monoclonal) (M04) - Background

Junctional complexes between the plasma membrane and endoplasmic/sarcoplasmic reticulum are a common feature of all excitable cell types and mediate cross talk between cell surface and intracellular ion channels. The protein encoded by this gene is a component of junctional complexes and is composed of a C-terminal hydrophobic segment spanning the endoplasmic/sarcoplasmic reticulum

Provided below are standard protocols that you may find useful for product applications.

- [Western Blot](#)
- [Blocking Peptides](#)
- [Dot Blot](#)
- [Immunohistochemistry](#)
- [Immunofluorescence](#)
- [Immunoprecipitation](#)
- [Flow Cytometry](#)
- [Cell Culture](#)

membrane and a remaining cytoplasmic domain that shows specific affinity for the plasma membrane. This gene is a member of the junctophilin gene family.

JPH1 Antibody (monoclonal) (M04) - References

Personalized smoking cessation: interactions between nicotine dose, dependence and quit-success genotype score. Rose JE, et al. Mol Med, 2010 Jul-Aug. PMID 20379614. New molecular components supporting ryanodine receptor-mediated Ca(2+) release: roles of junctophilin and TRIC channel in embryonic cardiomyocytes. Yamazaki D, et al. Pharmacol Ther, 2009 Mar. PMID 19095005. Global, in vivo, and site-specific phosphorylation dynamics in signaling networks. Olsen JV, et al. Cell, 2006 Nov 3. PMID 17081983. DNA sequence and analysis of human chromosome 8. Nusbaum C, et al. Nature, 2006 Jan 19. PMID 16421571. Transcriptome characterization elucidates signaling networks that control human ES cell growth and differentiation. Brandenberger R, et al. Nat Biotechnol, 2004 Jun. PMID 15146197.