

## PLA2G1B Antibody (monoclonal) (M14)

Mouse monoclonal antibody raised against a full length recombinant PLA2G1B.

Catalog # AT3329a

### Specification

#### PLA2G1B Antibody (monoclonal) (M14) - Product Information

Application	WB
Primary Accession	<a href="#">P04054</a>
Other Accession	<a href="#">BC005386</a>
Reactivity	Human
Host	mouse
Clonality	Monoclonal
Isotype	IgG2b Kappa
Calculated MW	16360

#### PLA2G1B Antibody (monoclonal) (M14) - Additional Information

Gene ID 5319

#### Other Names

Phospholipase A2, Group IB phospholipase A2, Phosphatidylcholine 2-acylhydrolase 1B, PLA2G1B, PLA2, PLA2A, PPLA2

#### Target/Specificity

PLA2G1B (AAH05386, 17 a.a. ~ 70 a.a) full-length recombinant protein with GST tag. MW of the GST tag alone is 26 KDa.

#### Dilution

WB~~1:500~1000

#### Format

Clear, colorless solution in phosphate buffered saline, pH 7.2 .

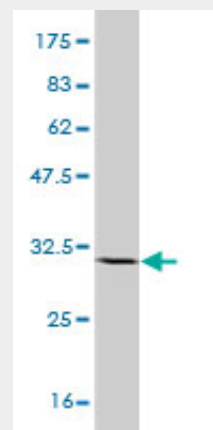
#### Storage

Store at -20°C or lower. Aliquot to avoid repeated freezing and thawing.

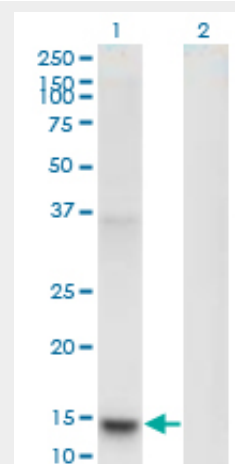
#### Precautions

PLA2G1B Antibody (monoclonal) (M14) is for research use only and not for use in diagnostic or therapeutic procedures.

#### PLA2G1B Antibody (monoclonal) (M14) - Protocols



Antibody Reactive Against Recombinant Protein. Western Blot detection against Immunogen (31.68 KDa) .



Western Blot analysis of PLA2G1B expression in transfected 293T cell line by PLA2G1B monoclonal antibody (M14), clone 2B7.

Lane 1: PLA2G1B transfected lysate (Predicted MW: 16.4 KDa).

Lane 2: Non-transfected lysate.

#### PLA2G1B Antibody (monoclonal) (M14) - Background

Phospholipase A2 (EC 3.1.1.4) catalyzes the

Provided below are standard protocols that you may find useful for product applications.

- [Western Blot](#)
- [Blocking Peptides](#)
- [Dot Blot](#)
- [Immunohistochemistry](#)
- [Immunofluorescence](#)
- [Immunoprecipitation](#)
- [Flow Cytometry](#)
- [Cell Culture](#)

release of fatty acids from glycerol-3-phosphocholines. The best known varieties are the digestive enzymes secreted as zymogens by the pancreas of mammals. Sequences of pancreatic PLA2 enzymes from a variety of mammals have been reported. One striking feature of these enzymes is their close homology to venom phospholipases of snakes. Other forms of PLA2 have been isolated from brain, liver, lung, spleen, intestine, macrophages, leukocytes, erythrocytes, inflammatory exudates, chondrocytes, and platelets (Seilhamer et al., 1986 [PubMed 3028739]) .

#### **PLA2G1B Antibody (monoclonal) (M14) - References**

Variation at the NFATC2 Locus Increases the Risk of Thiazolidinedione-Induced Edema in the Diabetes REduction Assessment with ramipril and rosiglitazone Medication (DREAM) Study. Bailey SD, et al. Diabetes Care, 2010 Jul 13. PMID 20628086. Gene-centric association signals for lipids and apolipoproteins identified via the HumanCVD BeadChip. Talmud PJ, et al. Am J Hum Genet, 2009 Nov. PMID 19913121. Structural insight into the activation mechanism of human pancreatic phospholipase A2. Xu W, et al. J Biol Chem, 2009 Jun 12. PMID 19297324. Regulation of Wnt/beta-catenin pathway by cPLA2alpha and PPARdelta. Han C, et al. J Cell Biochem, 2008 Oct 1. PMID 18636547. The effects of beta2 adrenergic receptor gene polymorphism in lipid profiles. Kao WT, et al. Lipids Health Dis, 2008 May 21. PMID 18492292.