

**Phospho-ErbB2(Y1221) Antibody**  
**Affinity Purified Rabbit Polyclonal Antibody (Pab)**  
**Catalog # AW5222**

**Specification**

**Phospho-ErbB2(Y1221) Antibody - Product Information**

Application	<b>WB,E</b>
Primary Accession	<a href="#">P04626</a>
Reactivity	<b>Human</b>
Host	<b>Rabbit</b>
Clonality	<b>Polyclonal</b>
Calculated MW	<b>H=138 KDa</b>
Isotype	<b>Rabbit Ig</b>
Antigen Source	<b>HUMAN</b>

**Phospho-ErbB2(Y1221) Antibody - Additional Information**

**Gene ID 2064**

**Antigen Region**  
1190-1240

**Other Names**

ERBB2;HER2; MLN19; NEU; NGL; Receptor tyrosine-protein kinase erbB-2; Receptor tyrosine-protein kinase erbB-2; Metastatic lymph node gene 19 protein; Receptor tyrosine-protein kinase erbB-2; Proto-oncogene Neu; Receptor tyrosine-protein kinase erbB-2; Proto-oncogene c-ErbB-2; Receptor tyrosine-protein kinase erbB-2; Tyrosine kinase-type cell surface receptor HER2; Receptor tyrosine-protein kinase erbB-2; p185erbB2; Receptor tyrosine-protein kinase erbB-2; CD\_antigen=CD340; Flags: Precursor

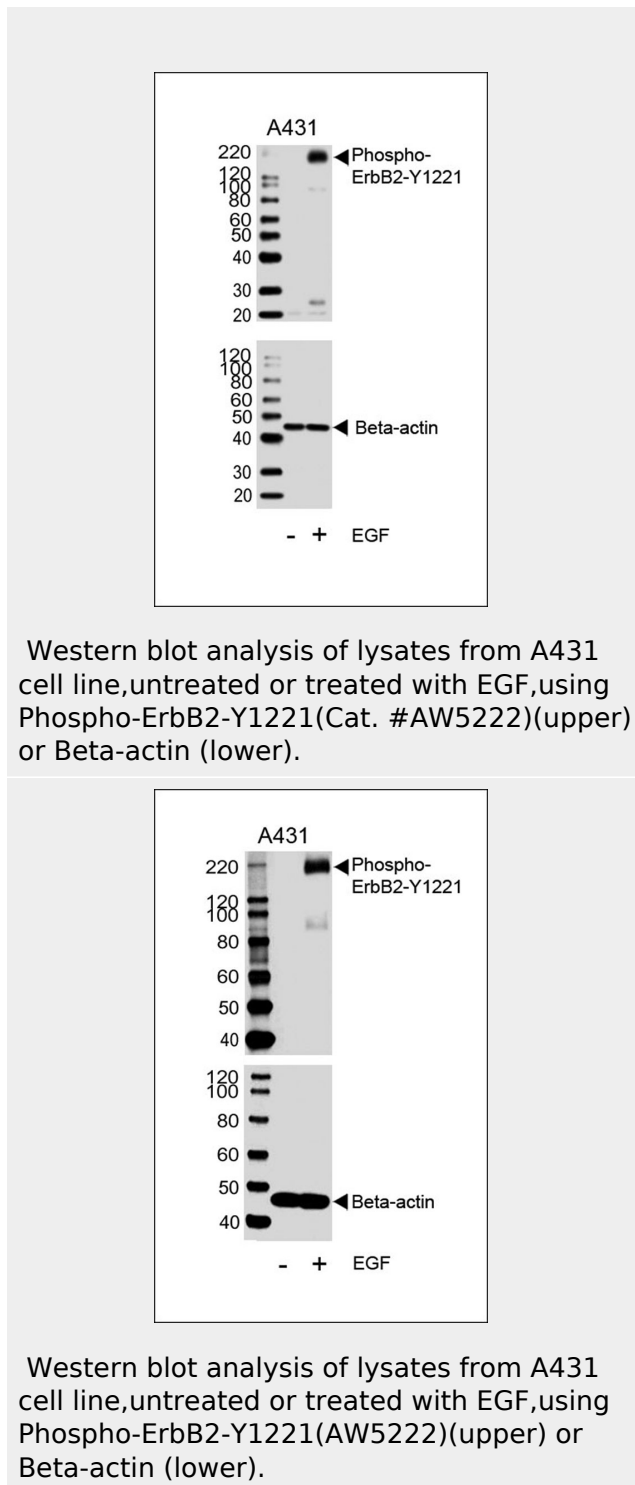
**Dilution**

WB~~1:1000

**Target/Specificity**

This ERBB2 Antibody is generated from rabbits immunized with a KLH conjugated synthetic phosphopeptide corresponding to amino acid residues surrounding Y1221 of human ERBB2.

**Format**



**Phospho-ErbB2(Y1221) Antibody -**

Purified polyclonal antibody supplied in PBS with 0.09% (W/V) sodium azide. This antibody is purified through a protein A column, followed by peptide affinity purification.

### **Storage**

Maintain refrigerated at 2-8°C for up to 2 weeks. For long term storage store at -20°C in small aliquots to prevent freeze-thaw cycles.

### **Precautions**

Phospho-ErbB2(Y1221) Antibody is for research use only and not for use in diagnostic or therapeutic procedures.

### **Phospho-ErbB2(Y1221) Antibody - Protein Information**

**Name** ERBB2

**Synonyms** HER2, MLN19, NEU, NGL

### **Function**

Protein tyrosine kinase that is part of several cell surface receptor complexes, but that apparently needs a coreceptor for ligand binding. Essential component of a neuregulin-receptor complex, although neuregulins do not interact with it alone. GP30 is a potential ligand for this receptor. Regulates outgrowth and stabilization of peripheral microtubules (MTs). Upon ERBB2 activation, the MEMO1-RHOA-DIAPH1 signaling pathway elicits the phosphorylation and thus the inhibition of GSK3B at cell membrane. This prevents the phosphorylation of APC and CLASP2, allowing its association with the cell membrane. In turn, membrane-bound APC allows the localization of MACF1 to the cell membrane, which is required for microtubule capture and stabilization.

### **Cellular Location**

[Isoform 1]: Cell membrane; Single-pass type I membrane protein Early endosome. Cytoplasm, perinuclear region. Nucleus. Note=Translocation to the nucleus requires endocytosis, probably endosomal sorting and is mediated by importin beta-1/KPNB1. Also detected in VPS35-positive endosome-to-TGN retrograde vesicles (PubMed:31138794). [Isoform 3]: Cytoplasm. Nucleus.

### **Background**

Protein tyrosine kinase that is part of several cell surface receptor complexes, but that apparently needs a coreceptor for ligand binding. Essential component of a neuregulin-receptor complex, although neuregulins do not interact with it alone. GP30 is a potential ligand for this receptor. Regulates outgrowth and stabilization of peripheral microtubules (MTs). Upon ERBB2 activation, the MEMO1-RHOA-DIAPH1 signaling pathway elicits the phosphorylation and thus the inhibition of GSK3B at cell membrane. This prevents the phosphorylation of APC and CLASP2, allowing its association with the cell membrane. In turn, membrane-bound APC allows the localization of MACF1 to the cell membrane, which is required for microtubule capture and stabilization. In the nucleus is involved in transcriptional regulation. Associates with the 5'-TCAAATTC-3' sequence in the PTGS2/COX-2 promoter and activates its transcription. Implicated in transcriptional activation of CDKN1A; the function involves STAT3 and SRC. Involved in the transcription of rRNA genes by RNA Pol I and enhances protein synthesis and cell growth.

### **Phospho-ErbB2(Y1221) Antibody - References**

Ehsani A., et al. Genomics 15:426-429(1993).  
Yamamoto T., et al. Nature 319:230-234(1986).  
Coussens L., et al. Science 230:1132-1139(1985).  
Wakamatsu A., et al. Submitted (OCT-2007) to the EMBL/GenBank/DBJ databases.  
Mural R.J., et al. Submitted (JUL-2005) to the EMBL/GenBank/DBJ databases.

**Tissue Location**

Expressed in a variety of tumor tissues including primary breast tumors and tumors from small bowel, esophagus, kidney and mouth.

**Phospho-ErbB2(Y1221) Antibody -  
Protocols**

Provided below are standard protocols that you may find useful for product applications.

- [Western Blot](#)
- [Blocking Peptides](#)
- [Dot Blot](#)
- [Immunohistochemistry](#)
- [Immunofluorescence](#)
- [Immunoprecipitation](#)
- [Flow Cytometry](#)
- [Cell Culture](#)