

UCHL1 Antibody (C-term)
Mouse Monoclonal Antibody (Mab)
Catalog # AW5233

Specification

UCHL1 Antibody (C-term) - Product Information

Application	WB,E
Primary Accession	P09936
Other Accession	Q00981 , Q6SEG5 , Q9R0P9 , Q60HC8 , P23356
Reactivity	Human, Mouse, Rat
Host	Mouse
Clonality	Monoclonal
Calculated MW	H=24;M=24;Rat= 24 KDa
Isotype	IgG1
Antigen Source	HUMAN

UCHL1 Antibody (C-term) - Additional Information

Gene ID 7345

Antigen Region
185-214

Other Names

UCHL1; Ubiquitin carboxyl-terminal hydrolase isozyme L1; Ubiquitin carboxyl-terminal hydrolase isozyme L1; Neuron cytoplasmic protein 9.5; Ubiquitin carboxyl-terminal hydrolase isozyme L1; PGP 9.5; Ubiquitin carboxyl-terminal hydrolase isozyme L1; Ubiquitin thioesterase L1

Dilution

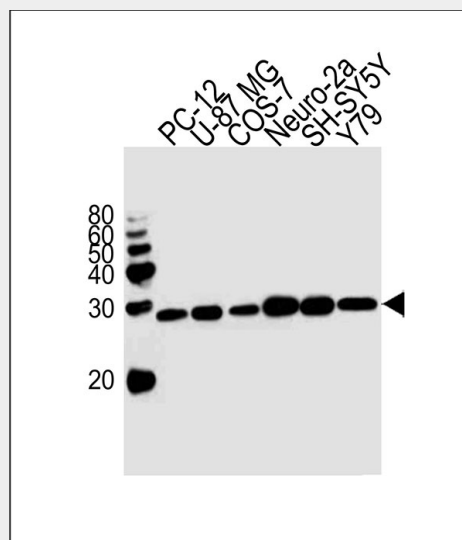
WB~1:1000

Target/Specificity

This UCHL1 Monoclonal antibody is generated from mice immunized with a KLH conjugated synthetic peptide selected from the 185-214 region of human UCHL1.

Format

Purified monoclonal antibody supplied in PBS with 0.09% (W/V) sodium azide. This antibody is purified through a protein G column, followed by dialysis against PBS.



Western blot analysis of lysates from rat PC-12, U-87 MG, COS-7, mouse Neuro-2a, SH-SY5Y, Y79 cell line (from left to right), using UCHL1 Antibody (C-term) (Cat. #AW5233). AW5233 was diluted at 1:1000 at each lane. A goat anti-mouse IgG H&L (HRP) at 1:10000 dilution was used as the secondary antibody.

UCHL1 Antibody (C-term) - Background

Ubiquitin-protein hydrolase involved both in the processing of ubiquitin precursors and of ubiquitinated proteins. This enzyme is a thiol protease that recognizes and hydrolyzes a peptide bond at the C-terminal glycine of ubiquitin. Also binds to free monoubiquitin and may prevent its degradation in lysosomes. The homodimer may have ATP-independent ubiquitin ligase activity.

UCHL1 Antibody (C-term) - References

Boudreaux D.A., et al. Proc. Natl. Acad. Sci. U.S.A. 107:9117-9122(2010).
Hillier L.W., et al. Nature 434:724-731(2005).
Mural R.J., et al. Submitted (JUL-2005) to the EMBL/GenBank/DBJ databases.

Storage

Maintain refrigerated at 2-8°C for up to 2 weeks. For long term storage store at -20°C in small aliquots to prevent freeze-thaw cycles.

Day I.N.M., et al. Biochem. J.
268:521-524(1990).
Choi J., et al. J. Biol. Chem.
279:13256-13264(2004).

Precautions

UCHL1 Antibody (C-term) is for research use only and not for use in diagnostic or therapeutic procedures.

UCHL1 Antibody (C-term) - Protein Information**Name** UCHL1**Function**

Ubiquitin-protein hydrolase involved both in the processing of ubiquitin precursors and of ubiquitinated proteins (Probable). This enzyme is a thiol protease that recognizes and hydrolyzes a peptide bond at the C-terminal glycine of ubiquitin (PubMed:9774100, PubMed:8639624, PubMed:12408865, PubMed:23359680). Also binds to free monoubiquitin and may prevent its degradation in lysosomes (By similarity). The homodimer may have ATP-independent ubiquitin ligase activity (PubMed:12408865).

Cellular Location

Cytoplasm. Endoplasmic reticulum membrane; Lipid- anchor. Note=About 30% of total UCHL1 is associated with membranes in brain

Tissue Location

Found in neuronal cell bodies and processes throughout the neocortex (at protein level). Expressed in neurons and cells of the diffuse neuroendocrine system and their tumors. Weakly expressed in ovary. Down-regulated in brains from Parkinson disease and Alzheimer disease patients.

UCHL1 Antibody (C-term) - Protocols

Provided below are standard protocols that you may find useful for product applications.

- [Western Blot](#)
- [Blocking Peptides](#)
- [Dot Blot](#)
- [Immunohistochemistry](#)
- [Immunofluorescence](#)
- [Immunoprecipitation](#)
- [Flow Cytometry](#)
- [Cell Culture](#)