

MDH1 Antibody (C-term)
Purified Rabbit Polyclonal Antibody (Pab)
Catalog # AW5245

Specification

MDH1 Antibody (C-term) - Product Information

Application	WB, IHC-P, FC,E
Primary Accession	P40925
Other Accession	O88989 , P11708 , P14152 , Q5ZME2 , Q3T145
Reactivity Predicted	Human Bovine, Chicken, Mouse, Pig, Rat
Host	Rabbit
Clonality	Polyclonal
Calculated MW	H=36,27,39;M=37 ;Rat=36 KDa
Isotype	Rabbit Ig
Antigen Source	HUMAN

MDH1 Antibody (C-term) - Additional Information

Gene ID 4190

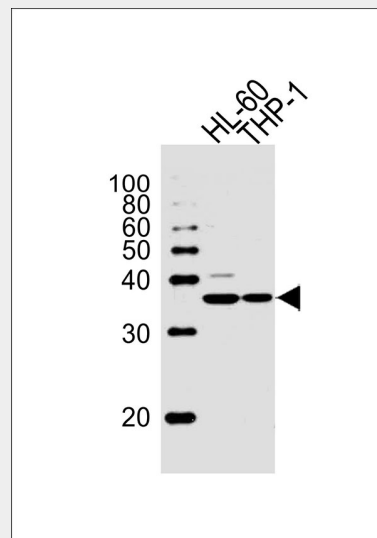
Antigen Region
286-314

Other Names
MDH1; MDHA; Malate dehydrogenase, cytoplasmic; Cytosolic malate dehydrogenase; Diiodophenylpyruvate reductase

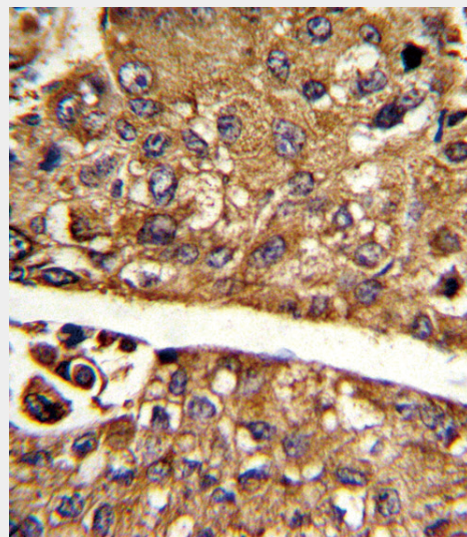
Dilution
WB~~1:1000
IHC-P~~1:10~50
FC~~1:10~50

Target/Specificity
This MDH1 antibody is generated from rabbits immunized with a KLH conjugated synthetic peptide between 286-314 amino acids from the C-terminal region of human MDH1.

Format
Purified polyclonal antibody supplied in PBS with 0.09% (W/V) sodium azide. This antibody is prepared by Saturated Ammonium Sulfate (SAS) precipitation



Western blot analysis of lysates from HL-60,THP-1 cell line (from left to right), using MDH1 Antibody (C-term)(Cat. #AW5245). AW5245 was diluted at 1:1000 at each lane. A goat anti-rabbit IgG H&L(HRP) at 1:10000 dilution was used as the secondary antibody.



Formalin-fixed and paraffin-embedded human hepatocarcinoma reacted with MDH1 Antibody (C-term), which was peroxidase-conjugated to the secondary

followed by dialysis against PBS.

Storage

Maintain refrigerated at 2-8°C for up to 2 weeks. For long term storage store at -20°C in small aliquots to prevent freeze-thaw cycles.

Precautions

MDH1 Antibody (C-term) is for research use only and not for use in diagnostic or therapeutic procedures.

MDH1 Antibody (C-term) - Protein Information

Name MDH1 ([HGNC:6970](#))

Synonyms MDHA

Function

Catalyzes the reduction of aromatic alpha-keto acids in the presence of NADH (PubMed:[3052244](http://www.uniprot.org/citations/3052244))

target="_blank">3052244). Plays essential roles in the malate- aspartate shuttle and the tricarboxylic acid cycle, important in mitochondrial NADH supply for oxidative phosphorylation (PubMed:[31538237](http://www.uniprot.org/citations/31538237)) target="_blank">31538237).

Cellular Location

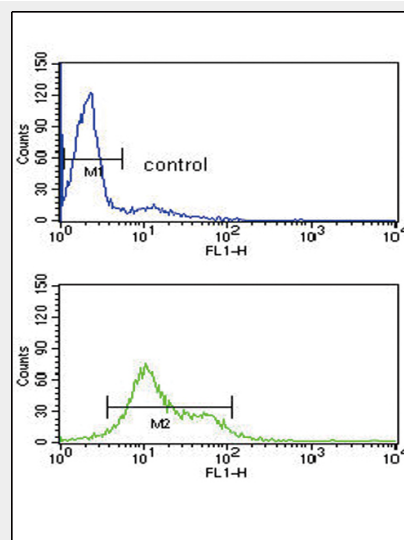
Cytoplasm.

MDH1 Antibody (C-term) - Protocols

Provided below are standard protocols that you may find useful for product applications.

- [Western Blot](#)
- [Blocking Peptides](#)
- [Dot Blot](#)
- [Immunohistochemistry](#)
- [Immunofluorescence](#)
- [Immunoprecipitation](#)
- [Flow Cytometry](#)
- [Cell Culture](#)

antibody, followed by DAB staining. This data demonstrates the use of this antibody for immunohistochemistry; clinical relevance has not been evaluated.



MDH1 Antibody (C-term) (Cat. #AW5245) flow cytometry analysis of HL-60 cells (bottom histogram) compared to a negative control cell (top histogram). FITC-conjugated goat-anti-rabbit secondary antibodies were used for the analysis.

MDH1 Antibody (C-term) - Background

MDH1 is localized to the cytoplasm and may play pivotal roles in the malate-aspartate shuttle that operates in the metabolic coordination between cytosol and mitochondria.

MDH1 Antibody (C-term) - References

Lee, S.M., et al., Cell Death Differ. 16 (5), 738-748 (2009)