

RHOXF2B Antibody (Center)
Affinity Purified Rabbit Polyclonal Antibody (Pab)
Catalog # AW5505

Specification

RHOXF2B Antibody (Center) - Product Information

Application	IF, WB,E
Primary Accession	P0C7M4
Reactivity	Human
Host	Rabbit
Clonality	Polyclonal
Calculated MW	H=32 KDa
Isotype	Rabbit Ig
Antigen Source	HUMAN

RHOXF2B Antibody (Center) - Additional Information

Gene ID 727940

Antigen Region
110-141

Other Names

Rhox homeobox family member 2B,
RHOXF2B

Dilution

IF~~1:10~50
WB~~1:1000

Target/Specificity

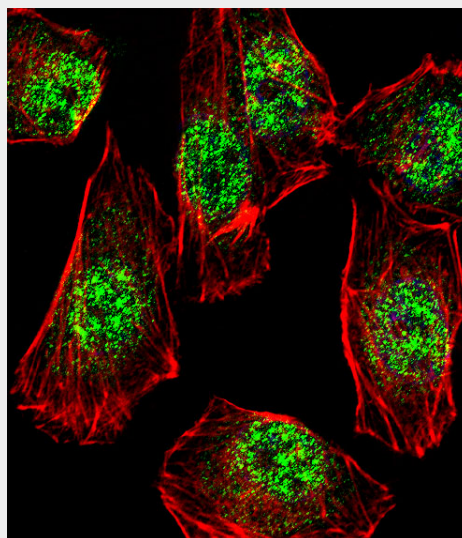
This RHOXF2B antibody is generated from rabbits immunized with a KLH conjugated synthetic peptide between 95-141 amino acids from the Central region of human RHOXF2B.

Storage

Maintain refrigerated at 2-8°C for up to 2 weeks. For long term storage store at -20°C in small aliquots to prevent freeze-thaw cycles.

Precautions

RHOXF2B Antibody (Center) is for research use only and not for use in diagnostic or therapeutic procedures.



Fluorescent confocal image of A549 cell stained with RHOXF2B Antibody (Center)(Cat#AW5505).A549 cells were fixed with 4% PFA (20 min), permeabilized with Triton X-100 (0.1%, 10 min), then incubated with RHOXF2B primary antibody (1:25, 1 h at 37°C). For secondary antibody, Alexa Fluor® 488 conjugated donkey anti-rabbit antibody (green) was used (1:400, 50 min at 37°C).Cytoplasmic actin was counterstained with Alexa Fluor® 555 (red) conjugated Phalloidin (7units/ml, 1 h at 37°C). Nuclei were counterstained with DAPI (blue) (10 µg/ml, 10 min).RHOXF2B immunoreactivity is localized to Nucleus significantly.

RHOXF2B Antibody (Center) - Protein Information

Name RHOXF2B ([HGNC:33519](#))

Function

Transcription factor maybe involved in reproductive processes. Modulates expression of target genes encoding proteins involved in processes relevant to spermatogenesis.

Cellular Location

Nucleus

{ECO:0000255|PROSITE-ProRule:PRU00108}.

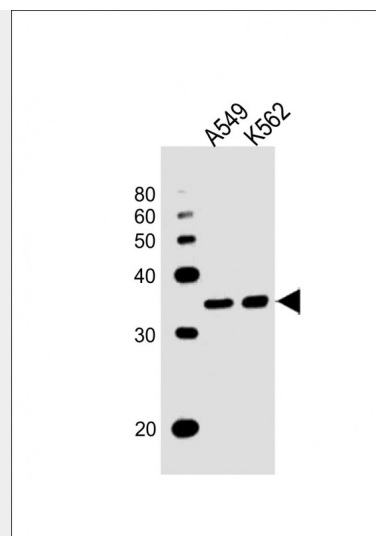
Tissue Location

Expressed in testis, mainly expressed in germ cells, but also detected in somatic cells such as Sertoli cells, Leydig cells and peritubular cells.

RHOXF2B Antibody (Center) - Protocols

Provided below are standard protocols that you may find useful for product applications.

- [Western Blot](#)
- [Blocking Peptides](#)
- [Dot Blot](#)
- [Immunohistochemistry](#)
- [Immunofluorescence](#)
- [Immunoprecipitation](#)
- [Flow Cytometry](#)
- [Cell Culture](#)



All lanes : Anti-RHOXF2B Antibody (Center) at 1:1000 dilution Lane 1: A549 whole cell lysates Lane 2: K562 whole cell lysates Lysates/proteins at 20 µg per lane. Secondary Goat Anti-Rabbit IgG, (H+L), Peroxidase conjugated at 1/10000 dilution. Predicted band size : 32 kDa Blocking/Dilution buffer: 5% NFDM/TBST.

RHOXF2B Antibody (Center) - Background

The function of this protein remains unknown.