

**CRABP2 Antibody (C-term)**  
**Affinity Purified Rabbit Polyclonal Antibody (Pab)**  
Catalog # AW5524**Specification****CRABP2 Antibody (C-term) - Product Information**

Application	WB,E
Primary Accession	<a href="#">P29373</a>
Reactivity	Human
Host	Rabbit
Clonality	Polyclonal
Calculated MW	H=16;M=16;R=16 KDa
Isotype	Rabbit Ig
Antigen Source	HUMAN

**CRABP2 Antibody (C-term) - Additional Information**

Gene ID 1382

**Antigen Region**  
102-136**Other Names**Cellular retinoic acid-binding protein 2,  
Cellular retinoic acid-binding protein II,  
CRABP-II, CRABP2**Dilution**

WB~~1:1000

**Target/Specificity**

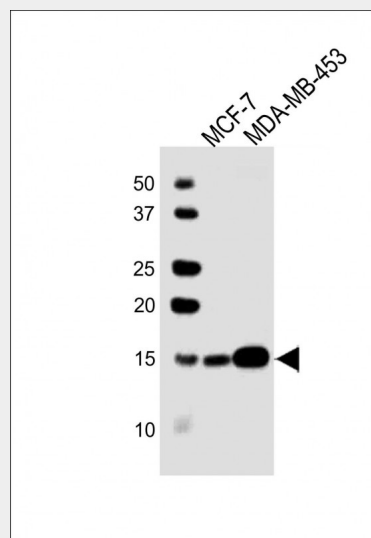
This CRABP2 antibody is generated from rabbits immunized with a KLH conjugated synthetic peptide between 102-136 amino acids from the C-terminal region of human CRABP2.

**Storage**

Maintain refrigerated at 2-8°C for up to 2 weeks. For long term storage store at -20°C in small aliquots to prevent freeze-thaw cycles.

**Precautions**

CRABP2 Antibody (C-term) is for research use only and not for use in diagnostic or therapeutic procedures.



All lanes : Anti-CRABP2 Antibody (C-term) at 1:1000 dilution Lane 1: MCF-7 whole cell lysate Lane 2: MDA-MB-453 whole cell lysate Lysates/proteins at 20 µg per lane. Secondary Goat Anti-Rabbit IgG, (H+L), Peroxidase conjugated at 1/10000 dilution. Predicted band size : 16 kDa Blocking/Dilution buffer: 5% NFDM/TBST.

**CRABP2 Antibody (C-term) - Background**

A number of specific carrier proteins for members of the vitamin A family have been discovered. Cellular retinoic acid binding proteins (CRABP) are low molecular weight proteins whose precise function remains unknown. The inducibility of the CRABP2 gene suggests that this isoform is important in retinoic acid-mediated regulation of human skin growth and differentiation. It has been postulated that the CRABP2 gene is transcriptionally regulated by a newly synthesized regulatory protein. [provided by RefSeq].

**CRABP2 Antibody (C-term) - References**

Sola, R., et al. Atherosclerosis

**CRABP2 Antibody (C-term) - Protein Information****Name** CRABP2**Function**

Transports retinoic acid to the nucleus.  
Regulates the access of retinoic acid to the nuclear retinoic acid receptors.

**Cellular Location**

Cytoplasm. Endoplasmic reticulum.  
Nucleus. Note=Upon ligand binding, a conformation change exposes a nuclear localization motif and the protein is transported into the nucleus

211(2):630-637(2010) Manolescu, D.C., et al. *Pediatr. Res.* 67(6):598-602(2010) Calmon, M.F., et al. *Neoplasia* 11(12):1329-1339(2009) Corlazzoli, F., et al. *PLoS ONE* 4 (1), E4305 (2009) : Gupta, A., et al. *Exp. Cell Res.* 314(20):3663-3668(2008)

**CRABP2 Antibody (C-term) - Protocols**

Provided below are standard protocols that you may find useful for product applications.

- [Western Blot](#)
- [Blocking Peptides](#)
- [Dot Blot](#)
- [Immunohistochemistry](#)
- [Immunofluorescence](#)
- [Immunoprecipitation](#)
- [Flow Cytometry](#)
- [Cell Culture](#)