

Anti-beta Catenin Antibody

Our beta Catenin rabbit polyclonal primary antibody from PhosphoSolutions is produced in-house. It d
Catalog # AN1322

Specification**Anti-beta Catenin Antibody - Product Information**

Application	WB
Primary Accession	O9WU82
Host	Rabbit
Clonality	Polyclonal
Isotype	IgG
Calculated MW	85455

Anti-beta Catenin Antibody - Additional Information

Gene ID **84353**

Other Names

b-catenin antibody, Beta catenin antibody, Beta-catenin antibody, Cadherin associated protein antibody, Catenin (cadherin associated protein), beta 1, 88kDa antibody, Catenin beta 1 antibody, Catenin beta-1 antibody, CATNB antibody, CHBCAT antibody, CTNB1_HUMAN antibody, CTNNB antibody, CTNNB1 antibody, DKFZp686D02253 antibody, FLJ25606 antibody, FLJ37923 antibody, OTTHUMP00000162082 antibody, OTTHUMP00000165222 antibody, OTTHUMP00000165223 antibody, OTTHUMP00000209288 antibody, OTTHUMP00000209289 antibody

Target/Specificity

beta Catenin, considered a moonlighting protein, is a component of mammalian cell adhesion complex in the cytoplasm along with playing a key downstream component of the canonical Wntless Int-1 (Wnt) signaling pathway in the nucleus (McTrea P.D et al, 1991 and Kemler R. et al, 1993). As part of a protein complex that forms adheren junctions, beta Catenin is necessary for the creation and maintenance of epithelial cell layers and barriers (Brembeck F.H. et al, 2006). beta Catenin is responsible for transmitting the contact inhibition signal that causes cells to stop dividing once the epithelial sheet is complete (Brembeck F.H. et al, 2006). The Wnt/beta Catenin signaling pathway plays important roles in mammalian development (Logan C.Y. et al, 2004) and irregular regulation of this signaling pathway is associated with human diseases and cancers (Moon R.T., 2004). HIPK2 is a negative regulator of the Wnt signaling via the direct phosphorylation of beta Catenin at ser33/37 causing degradation (Kim E.A. et al, 2010). Additionally, stabilization of beta Catenin has been shown when AMPK phosphorylates at ser552 regulating energy metabolism to cell differentiation and development by enhancing the beta Catenin/TCF mediated transcription within the Wnt/betaCatenin signaling pathway (Zhao J. et al, 2010).

Dilution

WB~~1:1000

Format

Antigen Affinity Purified from Pooled Serum

Storage

Maintain refrigerated at 2-8°C for up to 6 months. For long term storage store at -20°C in small

aliquots to prevent freeze-thaw cycles.

Precautions

Anti-beta Catenin Antibody is for research use only and not for use in diagnostic or therapeutic procedures.

Shipping

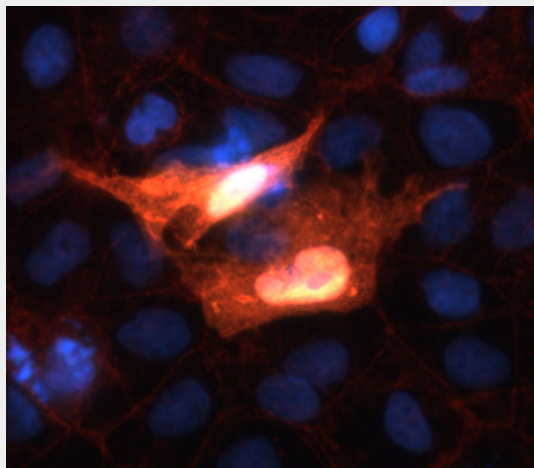
Blue Ice

Anti-beta Catenin Antibody - Protocols

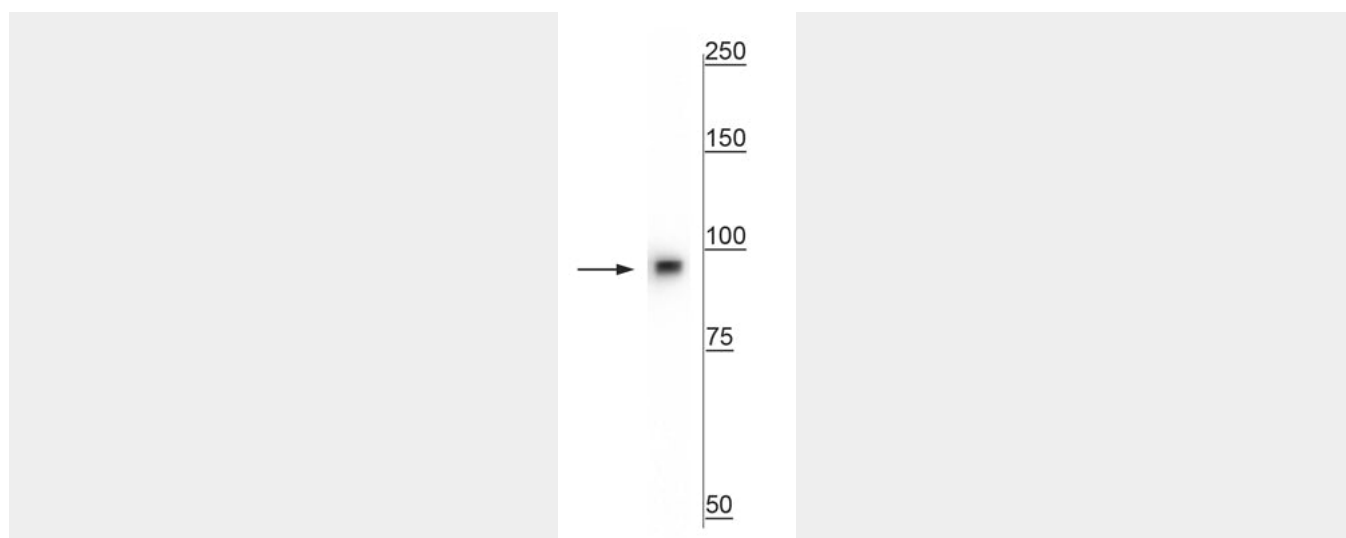
Provided below are standard protocols that you may find useful for product applications.

- [Western Blot](#)
- [Blocking Peptides](#)
- [Dot Blot](#)
- [Immunohistochemistry](#)
- [Immunofluorescence](#)
- [Immunoprecipitation](#)
- [Flow Cytometry](#)
- [Cell Culture](#)

Anti-beta Catenin Antibody - Images



Immunofluorescence of transfected COS-7 cells specifically labeling positive beta Catenin cells using our anti-beta Catenin antibody (1:200, red) and anti-FLAG antibody (green). The yellow color results from the overlap of cells labeled with both antibodies. DNA is labeled with DAPI (blue).



Western blot of rat whole brain lysate showing specific immunolabeling of the ~92 kDa beta Catenin protein.

Anti-beta Catenin Antibody - Background

beta Catenin, considered a moonlighting protein, is a component of mammalian cell adhesion complex in the cytoplasm along with playing a key downstream component of the canonical Wingless Int-1 (Wnt) signaling pathway in the nucleus (McTrea P.D et al, 1991 and Kemler R. et al, 1993). As part of a protein complex that forms adheren junctions, beta Catenin is necessary for the creation and maintenance of epithelial cell layers and barriers (Brembeck F.H. et al, 2006). beta Catenin is responsible for transmitting the contact inhibition signal that causes cells to stop dividing once the epithelial sheet is complete (Brembeck F.H. et al, 2006). The Wnt/beta Catenin signaling pathway plays important roles in mammalian development (Logan C.Y. et al, 2004) and irregular regulation of this signaling pathway is associated with human diseases and cancers (Moon R.T., 2004). HIPK2 is a negative regulator of the Wnt signaling via the direct phosphorylation of beta Catenin at ser33/37 causing degradation (Kim E.A. et al, 2010). Additionally, stabilization of beta Catenin has been shown when AMPK phosphorylates at ser552 regulating energy metabolism to cell differentiation and development by enhancing the beta Catenin/TCF mediated transcription within the Wnt/betaCatenin signaling pathway (Zhao J. et al, 2010).