

Anti-ChAT (Choline Acetyltransferase) Antibody

Our Anti-ChAT (Choline Acetyltransferase) primary antibody from PhosphoSolutions is rabbit polyclonal
Catalog # AN1335

Specification

Anti-ChAT (Choline Acetyltransferase) Antibody - Product Information

Application	WB
Primary Accession	P28329
Reactivity	Bovine, Chicken, Drosophila, C.Elegans, Epstein Barr Virus
Host	Rabbit
Clonality	Polyclonal
Isotype	IgG

Anti-ChAT (Choline Acetyltransferase) Antibody - Additional Information**Other Names**

Acetyl CoA choline O acetyltransferase antibody, Acetyl CoA:choline O acetyltransferase antibody, ChAT antibody, CHOACTase antibody, Choline acetylase antibody, choline acetyltransferase antibody, Choline O acetyltransferase antibody, Choline O-acetyltransferase antibody, CLAT_HUMAN antibody, CMS1A antibody, CMS1A2 antibody, EC 2.3.1.6 antibody, OTTHUMP00000019583 antibody, OTTHUMP00000019584 antibody

Target/Specificity

Choline acetyltransferase is a neuronal enzyme which catalyzes the reaction between Acetyl CoA and choline resulting in the formation of acetylcholine. It is therefore found primarily in cholinergic neurons making it a valuable marker for diseases associated with decreased cholinergic function such as Schizophrenia, Alzheimer's disease (AD) and Down syndrome (Holt et al. 1999). Decreased choline acetyltransferase activity in particular has been shown in Schizophrenic subjects (Karson et al 1993). It has furthermore been demonstrated that in patients with AD, there are significantly lower levels of cortical ChAT that correlate with severity of the disease as measured by loss of neuropsychological function (Baskin et al. 1999).

Dilution

WB~~1:1000

Format

Neat serum

Storage

Maintain refrigerated at 2-8°C for up to 6 months. For long term storage store at -20°C in small aliquots to prevent freeze-thaw cycles.

Precautions

Anti-ChAT (Choline Acetyltransferase) Antibody is for research use only and not for use in diagnostic or therapeutic procedures.

Shipping

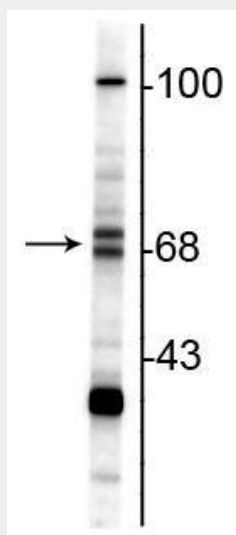
Blue Ice

Anti-ChAT (Choline Acetyltransferase) Antibody - Protocols

Provided below are standard protocols that you may find useful for product applications.

- [Western Blot](#)
- [Blocking Peptides](#)
- [Dot Blot](#)
- [Immunohistochemistry](#)
- [Immunofluorescence](#)
- [Immunoprecipitation](#)
- [Flow Cytometry](#)
- [Cell Culture](#)

Anti-ChAT (Choline Acetyltransferase) Antibody - Images



Western blot of rat hippocampal lysate showing specific immunolabeling of the ~68/70 kDa ChAT.

Anti-ChAT (Choline Acetyltransferase) Antibody - Background

Choline acetyltransferase is a neuronal enzyme which catalyzes the reaction between Acetyl CoA and choline resulting in the formation of acetylcholine. It is therefore found primarily in cholinergic neurons making it a valuable marker for diseases associated with decreased cholinergic function such as Schizophrenia, Alzheimer's disease (AD) and Down syndrome (Holt et al. 1999). Decreased choline acetyltransferase activity in particular has been shown in Schizophrenic subjects (Karson et al 1993). It has furthermore been demonstrated that in patients with AD, there are significantly lower levels of cortical ChAT that correlate with severity of the disease as measured by loss of neuropsychological function (Baskin et al. 1999).