

**Anti-PRAS40 (Thr356) Antibody**

Our Anti-PRAS40 (Thr356) rabbit polyclonal phosphospecific primary antibody from PhosphoSolutions is  
Catalog # AN1525

**Specification**

---

**Anti-PRAS40 (Thr356) Antibody - Product Information**

Primary Accession	<a href="#">O7JXA2</a>
Host	<b>Rabbit</b>
Clonality	<b>Polyclonal</b>
Isotype	<b>IgG</b>

**Anti-PRAS40 (Thr356) Antibody - Additional Information****Other Names**

40 kDa proline rich AKT substrate antibody, 40 kDa proline-rich AKT substrate antibody, AKT1 S1 antibody, AKT1 substrate 1 (proline rich) antibody, AKT1 substrate 1 antibody, AKT1S 1 antibody, AKT1S1 antibody, AKT1S\_HUMAN antibody, Lobe antibody, MGC2865 antibody, PRAS 40 antibody, PRAS antibody, PRAS40 antibody, Proline rich akt substrate antibody, Proline rich Akt substrate 40 kDa antibody, Proline-rich AKT1 substrate 1 antibody

**Target/Specificity**

PRAS40 (proline-rich Akt/PKB substrate of 40 kDa) acts at the intersection of the Akt- and mTOR-mediated signaling pathways and its phosphorylation by Akt and by mTORC1 results in dissociation of PRAS40 from mTORC1 which may relieve an inhibitory constraint on mTORC1 activity (Wiza et al., 2012). Phosphorylation of PRAS40 by Akt and association with 14-3-3 has also been indicated to be crucial for insulin to stimulate mTOR. (Vander Haar et al., 2007). The primary function of PRAS40 in vivo in Drosophila has been shown to regulate TORC1 activity, and not to act as a downstream target and effector of TORC1 (Pallares et al., 2012).

**Format**

Antigen Affinity Purified from Pooled Serum

**Storage**

Maintain refrigerated at 2-8°C for up to 6 months. For long term storage store at -20°C in small aliquots to prevent freeze-thaw cycles.

**Precautions**

Anti-PRAS40 (Thr356) Antibody is for research use only and not for use in diagnostic or therapeutic procedures.

**Shipping**

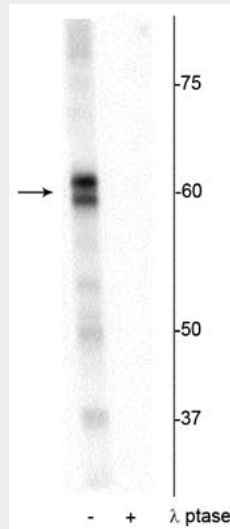
Blue Ice

**Anti-PRAS40 (Thr356) Antibody - Protocols**

Provided below are standard protocols that you may find useful for product applications.

- [Western Blot](#)
- [Blocking Peptides](#)
- [Dot Blot](#)
- [Immunohistochemistry](#)
- [Immunofluorescence](#)
- [Immunoprecipitation](#)
- [Flow Cytometry](#)
- [Cell Culture](#)

#### Anti-PRAS40 (Thr356) Antibody - Images



Western blot of Drosophila lysate showing specific immunolabeling of the ~60 kDa PRAS40 protein phosphorylated at Thr356 in the first lane (-). Phosphospecificity is shown in the second lane (+) where the immunolabeling is completely eliminated by blot treatment with lambda phosphatase ( $\lambda$ -Ptase, 1200 units for 30 minutes).

#### Anti-PRAS40 (Thr356) Antibody - Background

PRAS40 (proline-rich Akt/PKB substrate of 40 kDa) acts at the intersection of the Akt- and mTOR-mediated signaling pathways and its phosphorylation by Akt and by mTORC1 results in dissociation of PRAS40 from mTORC1 which may relieve an inhibitory constraint on mTORC1 activity (Wiza et al., 2012). Phosphorylation of PRAS40 by Akt and association with 14-3-3 has also been indicated to be crucial for insulin to stimulate mTOR. (Vander Haar et al., 2007). The primary function of PRAS40 in vivo in Drosophila has been shown to regulate TORC1 activity, and not to act as a downstream target and effector of TORC1 (Pallares et al., 2012).