

Anti-Cdc42 Antibody
Catalog # AN1711**Specification**

Anti-Cdc42 Antibody - Product Information

Application	WB
Primary Accession	Q8CFN2
Reactivity	Bovine
Host	Mouse
Clonality	Mouse Monoclonal
Isotype	IgG1
Calculated MW	21259

Anti-Cdc42 Antibody - Additional Information

Gene ID	64465
Other Names	
CDC-42, G25K	

Target/Specificity

Cdc42 proteins are Rho GTPase family members, which act as molecular switches in regulating a variety of biological response pathways including cell motility, cell-cycle progression, gene transcription, and cell transformation. Cdc42 GTPases regulate molecular events by cycling from the inactive GDP-bound state to active GTP-bound forms. The ratio of GDP versus GTP, which is bound to the GTPase, is determined by the opposing effects of guanine nucleotide exchange factors and GTPase activating proteins. Active (GTP-bound) Cdc42 binds to the p21-binding domain of p21-activated protein kinase 1 (PAK1) to regulate downstream signaling cascades.

Dilution

WB~~1:1000

Format

Protein A Purified

Storage

Maintain refrigerated at 2-8°C for up to 6 months. For long term storage store at -20°C in small aliquots to prevent freeze-thaw cycles.

Precautions

Anti-Cdc42 Antibody is for research use only and not for use in diagnostic or therapeutic procedures.

Shipping

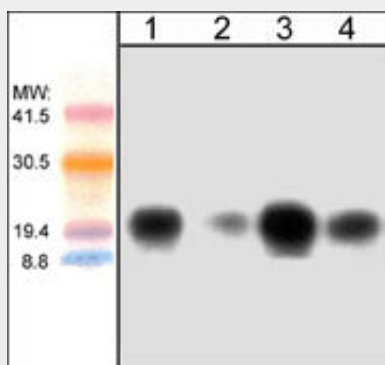
Blue Ice

Anti-Cdc42 Antibody - Protocols

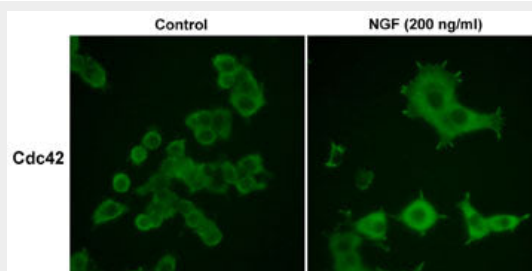
Provided below are standard protocols that you may find useful for product applications.

- [Western Blot](#)
- [Blocking Peptides](#)
- [Dot Blot](#)
- [Immunohistochemistry](#)
- [Immunofluorescence](#)
- [Immunoprecipitation](#)
- [Flow Cytometry](#)
- [Cell Culture](#)

Anti-Cdc42 Antibody - Images



Western blot analysis of human jurkat cells (lanes 1 & 2) and mouse brain (lanes 3 & 4). The blots were probed with anti-Cdc42 antibody at 1:125 (lanes 1 & 3) or 1:500 (lanes 2 & 4).



Immunocytochemical labeling in rat PC12 cells grown for 4 days on poly-D-lysine-coated plates in the presence (200 ng/ml) or absence (Control) of Nerve Growth Factor (NGF). Anti-Cdc42 (CM1521) was used at 1:50 dilution followed by labeling with donkey anti-mouse:Cy2.

Anti-Cdc42 Antibody - Background

Cdc42 proteins are Rho GTPase family members, which act as molecular switches in regulating a variety of biological response pathways including cell motility, cell-cycle progression, gene transcription, and cell transformation. Cdc42 GTPases regulate molecular events by cycling from the inactive GDP-bound state to active GTP-bound forms. The ratio of GDP versus GTP, which is bound to the GTPase, is determined by the opposing effects of guanine nucleotide exchange factors and GTPase activating proteins. Active (GTP-bound) Cdc42 binds to the p21-binding domain of p21-activated protein kinase 1 (PAK1) to regulate downstream signaling cascades.