

Anti-DISC1 (Ser-710), Phosphospecific Antibody
Catalog # AN1747**Specification****Anti-DISC1 (Ser-710), Phosphospecific Antibody - Product Information**

Primary Accession	Q811T9
Reactivity	Bovine, Chicken
Host	Rabbit
Clonality	Rabbit Polyclonal
Isotype	IgG
Calculated MW	92525

Anti-DISC1 (Ser-710), Phosphospecific Antibody - Additional Information

Gene ID	244667
Other Names	
disrupted schizophrenia	

Target/Specificity

Disrupted in schizophrenia 1 (DISC1) is a multifunctional scaffold protein that has important roles in neurodevelopment. DISC1 is expressed in both neuronal progenitor cells and postmitotic neurons in the developing cerebral cortex. DISC1 can interact with both centrosomal proteins and dynein-motor related proteins. In addition, DISC1 interacts with and inhibits the kinase GSK-3 β to enable Wnt activation of β -catenin-mediated gene transcription and neuron proliferation. These functions of DISC1 may be regulated by post-translational modification. PKA and CDK5 can phosphorylate Ser-710, and a non-phosphorylatable Ser-710 mutant shows decreased interaction with the centrosomal proteins, BBS1 and BBS4, while a constitutively phosphorylated Ser-710 mutant shows increased interaction with these proteins. During neuronal progenitor cell proliferation, DISC1 phosphorylation at Ser-710 is low and the interaction with GSK-3 β is enhanced. By contrast, DISC1 phosphorylation is increased, association with GSK-3 β is decreased, and interaction with BBS1 is enhanced during postmitotic neuron migration.

Storage

Maintain refrigerated at 2-8°C for up to 6 months. For long term storage store at -20°C in small aliquots to prevent freeze-thaw cycles.

Precautions

Anti-DISC1 (Ser-710), Phosphospecific Antibody is for research use only and not for use in diagnostic or therapeutic procedures.

Shipping

Blue Ice

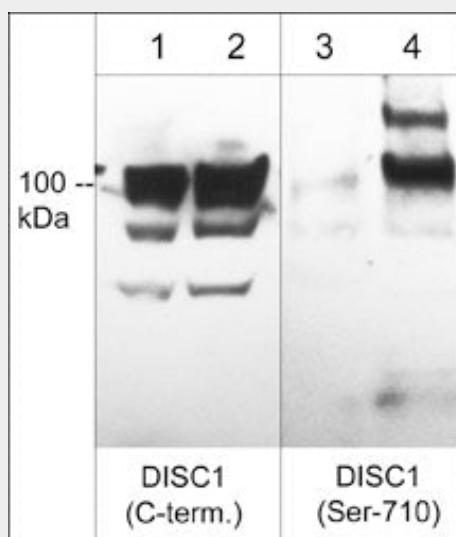
Anti-DISC1 (Ser-710), Phosphospecific Antibody - Protocols

Provided below are standard protocols that you may find useful for product applications.

- [Western Blot](#)

- [Blocking Peptides](#)
- [Dot Blot](#)
- [Immunohistochemistry](#)
- [Immunofluorescence](#)
- [Immunoprecipitation](#)
- [Flow Cytometry](#)
- [Cell Culture](#)

Anti-DISC1 (Ser-710), Phosphospecific Antibody - Images



Western blot of DISC1 phosphorylation in PC12 cells untreated (lanes 1 & 3) or treated with calyculin A (100 nM) for 30 min (lanes 2 & 4). The blots were probed with DP3041 anti-DISC1 (a.a. 740-753) (lanes 1 & 2) or DP3061 anti-DISC1 (Ser-710) (lanes 3 & 4).

Anti-DISC1 (Ser-710), Phosphospecific Antibody - Background

Disrupted in schizophrenia 1 (DISC1) is a multifunctional scaffold protein that has important roles in neurodevelopment. DISC1 is expressed in both neuronal progenitor cells and postmitotic neurons in the developing cerebral cortex. DISC1 can interact with both centrosomal proteins and dynein-motor related proteins. In addition, DISC1 interacts with and inhibits the kinase GSK-3 β to enable Wnt activation of β -catenin-mediated gene transcription and neuron proliferation. These functions of DISC1 may be regulated by post-translational modification. PKA and CDK5 can phosphorylate Ser-710, and a non-phosphorylatable Ser-710 mutant shows decreased interaction with the centrosomal proteins, BBS1 and BBS4, while a constitutively phosphorylated Ser-710 mutant shows increased interaction with these proteins. During neuronal progenitor cell proliferation, DISC1 phosphorylation at Ser-710 is low and the interaction with GSK-3 β is enhanced. By contrast, DISC1 phosphorylation is increased, association with GSK-3 β is decreased, and interaction with BBS1 is enhanced during postmitotic neuron migration.