

**AEBP1 Antibody (Center)**  
**Affinity Purified Rabbit Polyclonal Antibody (Pab)**  
**Catalog # AP10098c****Specification**

---

**AEBP1 Antibody (Center) - Product Information**

Application	WB,E
Primary Accession	<a href="#">Q8IUX7</a>
Other Accession	<a href="#">NP_001120.3</a>
Reactivity	Human
Host	Rabbit
Clonality	Polyclonal
Isotype	Rabbit IgG
Antigen Region	334-364

**AEBP1 Antibody (Center) - Additional Information****Gene ID** 165**Other Names**

Adipocyte enhancer-binding protein 1, AE-binding protein 1, Aortic carboxypeptidase-like protein, AEBP1, ACLP

**Target/Specificity**

This AEBP1 antibody is generated from rabbits immunized with a KLH conjugated synthetic peptide between 334-364 amino acids from the Central region of human AEBP1.

**Dilution**

WB~~1:8000

E~~Use at an assay dependent concentration.

**Format**

Purified polyclonal antibody supplied in PBS with 0.09% (W/V) sodium azide. This antibody is purified through a protein A column, followed by peptide affinity purification.

**Storage**

Maintain refrigerated at 2-8°C for up to 2 weeks. For long term storage store at -20°C in small aliquots to prevent freeze-thaw cycles.

**Precautions**

AEBP1 Antibody (Center) is for research use only and not for use in diagnostic or therapeutic procedures.

**AEBP1 Antibody (Center) - Protein Information****Name** AEBP1**Synonyms** ACLP

**Function** [Isoform 1]: As a positive regulator of collagen fibrillogenesis, it is probably involved in the organization and remodeling of the extracellular matrix.

**Cellular Location**

[Isoform 1]: Secreted {ECO:0000250|UniProtKB:Q640N1}

**Tissue Location**

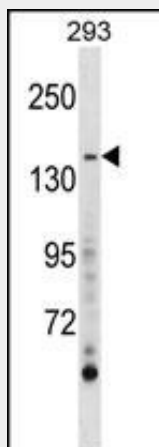
Expressed in osteoblast and visceral fat.

**AEBP1 Antibody (Center) - Protocols**

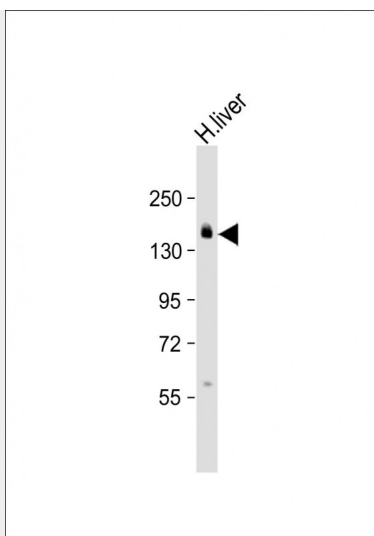
Provided below are standard protocols that you may find useful for product applications.

- [Western Blot](#)
- [Blocking Peptides](#)
- [Dot Blot](#)
- [Immunohistochemistry](#)
- [Immunofluorescence](#)
- [Immunoprecipitation](#)
- [Flow Cytometry](#)
- [Cell Culture](#)

**AEBP1 Antibody (Center) - Images**



AEBP1 Antibody (Center) (Cat. #AP10098c) western blot analysis in 293 cell line lysates (35ug/lane). This demonstrates the AEBP1 antibody detected the AEBP1 protein (arrow).



Anti-AEBP1 Antibody (Center) at 1:8000 dilution + Human liver lysate Lysates/proteins at 20  $\mu$ g per lane. Secondary Goat Anti-Rabbit IgG, (H+L), Peroxidase conjugated at 1/10000 dilution. Predicted band size : 131 kDa Blocking/Dilution buffer: 5% NFDM/TBST.

#### **AEBP1 Antibody (Center) - Background**

The adipocyte enhancer binding protein 1 is a transcriptional repressor with carboxypeptidase (CP) activity. This protein binds to a regulatory sequence, adipocyte enhancer 1 (AE-1), located in the proximal promoter region of the adipose P2 (aP2) gene, which encodes the adipocyte fatty-acid binding protein. It is characterized as a member of the regulatory B-like CP family. This protein seems to be activated by a novel mechanism, whereby the direct binding of DNA enhances its protease activity. Adipocyte-enhancer binding protein 1 may play a role in differentiated vascular smooth muscle cells.

#### **AEBP1 Antibody (Center) - References**

Majdalawieh, A., et al. Nucl Recept Signal 8, E004 (2010) :  
Schissel, S.L., et al. Am. J. Pathol. 174(3):818-828(2009)  
Zhang, L., et al. Mol. Med. 11 (1-12), 39-47 (2005) :  
Layne, M.D., et al. Mol. Cell. Biol. 21(15):5256-5261(2001)  
Muisse, A.M., et al. Biochem. J. 343 PT 2, 341-345 (1999) :