

PRRG3 Antibody (Center)
Affinity Purified Rabbit Polyclonal Antibody (Pab)
Catalog # AP10624c

Specification

PRRG3 Antibody (Center) - Product Information

Application	WB, FC,E
Primary Accession	O9BZD7
Other Accession	NP_076987.3
Reactivity	Human
Host	Rabbit
Clonality	Polyclonal
Isotype	Rabbit IgG
Calculated MW	25875
Antigen Region	121-150

PRRG3 Antibody (Center) - Additional Information

Gene ID 79057

Other Names

Transmembrane gamma-carboxyglutamic acid protein 3, Proline-rich gamma-carboxyglutamic acid protein 3, Proline-rich Gla protein 3, PRRG3, PRGP3, TMG3

Target/Specificity

This PRRG3 antibody is generated from rabbits immunized with a KLH conjugated synthetic peptide between 121-150 amino acids from the Central region of human PRRG3.

Dilution

WB~~1:1000

FC~~1:10~50

E~~Use at an assay dependent concentration.

Format

Purified polyclonal antibody supplied in PBS with 0.09% (W/V) sodium azide. This antibody is purified through a protein A column, followed by peptide affinity purification.

Storage

Maintain refrigerated at 2-8°C for up to 2 weeks. For long term storage store at -20°C in small aliquots to prevent freeze-thaw cycles.

Precautions

PRRG3 Antibody (Center) is for research use only and not for use in diagnostic or therapeutic procedures.

PRRG3 Antibody (Center) - Protein Information

Name PRRG3

Synonyms PRGP3, TMG3

Cellular Location

Membrane; Single-pass type I membrane protein.

Tissue Location

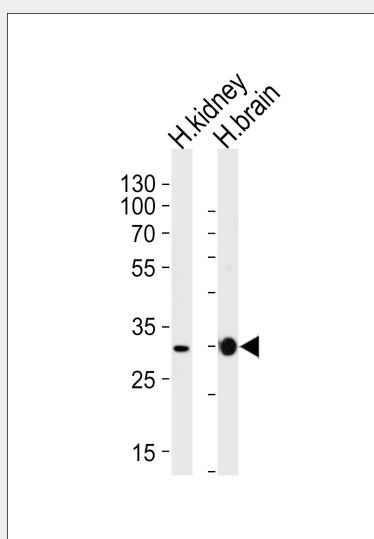
Expressed in brain, lung, kidney and heart.

PRRG3 Antibody (Center) - Protocols

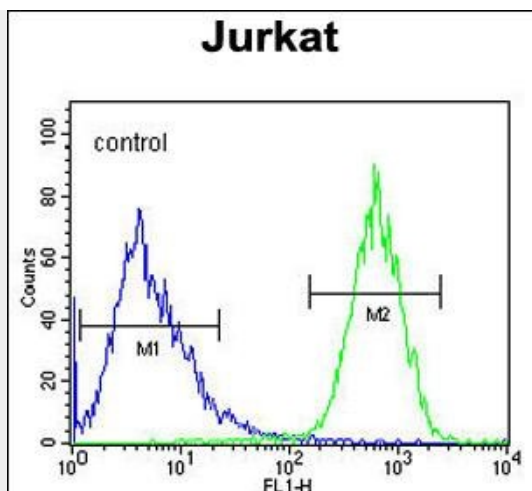
Provided below are standard protocols that you may find useful for product applications.

- [Western Blot](#)
- [Blocking Peptides](#)
- [Dot Blot](#)
- [Immunohistochemistry](#)
- [Immunofluorescence](#)
- [Immunoprecipitation](#)
- [Flow Cytometry](#)
- [Cell Culture](#)

PRRG3 Antibody (Center) - Images



Western blot analysis of lysates from human kidney and brain tissue lysates (from left to right), using PRRG3 Antibody (Center)(Cat. #AP10624c). AP10624c was diluted at 1:1000 at each lane. A goat anti-rabbit IgG H&L(HRP) at 1:5000 dilution was used as the secondary antibody. Lysates at 35ug per lane.



PRRG3 Antibody (Center) (Cat. #AP10624c) flow cytometric analysis of Jurkat cells (right histogram) compared to a negative control cell (left histogram). FITC-conjugated goat-anti-rabbit secondary antibodies were used for the analysis.