

CCDC38 Antibody (Center)
Affinity Purified Rabbit Polyclonal Antibody (Pab)
Catalog # AP10644c**Specification**

CCDC38 Antibody (Center) - Product Information

Application	IHC-P, WB,E
Primary Accession	Q502W7
Other Accession	Q95JL6 , NP_872302.2
Reactivity	Human, Mouse
Predicted	Monkey
Host	Rabbit
Clonality	Polyclonal
Isotype	Rabbit IgG
Calculated MW	65315
Antigen Region	352-380

CCDC38 Antibody (Center) - Additional Information**Gene ID** 120935**Other Names**

Coiled-coil domain-containing protein 38, CCDC38

Target/Specificity

This CCDC38 antibody is generated from rabbits immunized with a KLH conjugated synthetic peptide between 352-380 amino acids from the Central region of human CCDC38.

Dilution

IHC-P~~1:50~100

WB~~1:1000

E~~Use at an assay dependent concentration.

Format

Purified polyclonal antibody supplied in PBS with 0.09% (W/V) sodium azide. This antibody is purified through a protein A column, followed by peptide affinity purification.

Storage

Maintain refrigerated at 2-8°C for up to 2 weeks. For long term storage store at -20°C in small aliquots to prevent freeze-thaw cycles.

Precautions

CCDC38 Antibody (Center) is for research use only and not for use in diagnostic or therapeutic procedures.

CCDC38 Antibody (Center) - Protein Information**Name** CCDC38

Function Essential for male fertility. Required for sperm flagellum biogenesis. Also required for acrosome biogenesis. Required for the attachment of developing acrosomes to the nucleus during spermiogenesis and may be involved in the transport of fibrous sheath components.

Cellular Location

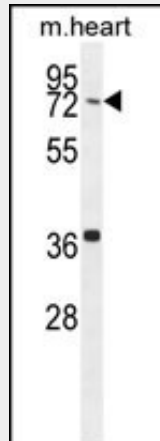
Cytoplasm, cytoskeleton, microtubule organizing center, centrosome. Cytoplasm, perinuclear region {ECO:0000250|UniProtKB:Q8CDN8}. Cell projection, cilium, flagellum {ECO:0000250|UniProtKB:Q8CDN8}. Cytoplasm, cytoskeleton {ECO:0000250|UniProtKB:Q8CDN8}. Note=Localizes to the sperm flagellum, manchette and the perinuclear region of the sperm head. {ECO:0000250|UniProtKB:Q8CDN8}

CCDC38 Antibody (Center) - Protocols

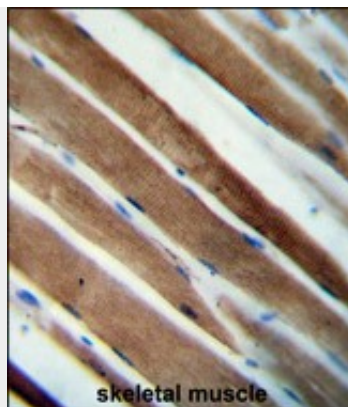
Provided below are standard protocols that you may find useful for product applications.

- [Western Blot](#)
- [Blocking Peptides](#)
- [Dot Blot](#)
- [Immunohistochemistry](#)
- [Immunofluorescence](#)
- [Immunoprecipitation](#)
- [Flow Cytometry](#)
- [Cell Culture](#)

CCDC38 Antibody (Center) - Images



CCDC38 Antibody (Center) (Cat. #AP10644c) western blot analysis in mouse heart tissue lysates (35ug/lane). This demonstrates the CCDC38 antibody detected the CCDC38 protein (arrow).



CCDC38 Antibody (Center) (Cat. #AP10644c) immunohistochemistry analysis in formalin fixed and paraffin embedded human skeletal muscle followed by peroxidase conjugation of the secondary antibody and DAB staining. This data demonstrates the use of the CCDC38 Antibody (Center) for immunohistochemistry. Clinical relevance has not been evaluated.