

**PDHA2 Antibody (Center)**  
**Affinity Purified Rabbit Polyclonal Antibody (Pab)**  
**Catalog # AP10756c**

**Specification**

---

**PDHA2 Antibody (Center) - Product Information**

Application	IHC-P, WB,E
Primary Accession	<a href="#">P29803</a>
Other Accession	<a href="#">NP_005381.1</a>
Reactivity	Human
Host	Rabbit
Clonality	Polyclonal
Isotype	Rabbit IgG
Calculated MW	42933
Antigen Region	287-314

**PDHA2 Antibody (Center) - Additional Information**

**Gene ID** 5161

**Other Names**

Pyruvate dehydrogenase E1 component subunit alpha, testis-specific form, mitochondrial, PDHE1-A type II, PDHA2, PDHAL

**Target/Specificity**

This PDHA2 antibody is generated from rabbits immunized with a KLH conjugated synthetic peptide between 287-314 amino acids from the Central region of human PDHA2.

**Dilution**

IHC-P~~1:50~100

WB~~1:1000

E~~Use at an assay dependent concentration.

**Format**

Purified polyclonal antibody supplied in PBS with 0.09% (W/V) sodium azide. This antibody is purified through a protein A column, followed by peptide affinity purification.

**Storage**

Maintain refrigerated at 2-8°C for up to 2 weeks. For long term storage store at -20°C in small aliquots to prevent freeze-thaw cycles.

**Precautions**

PDHA2 Antibody (Center) is for research use only and not for use in diagnostic or therapeutic procedures.

**PDHA2 Antibody (Center) - Protein Information**

**Name** PDHA2

**Synonyms** PDHAL

**Function** The pyruvate dehydrogenase complex catalyzes the overall conversion of pyruvate to acetyl-CoA and CO(2), and thereby links the glycolytic pathway to the tricarboxylic cycle.

**Cellular Location**

Mitochondrion matrix.

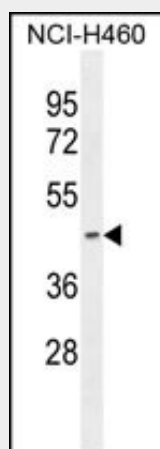
**Tissue Location**

Testis. Expressed in postmeiotic spermatogenic cells.

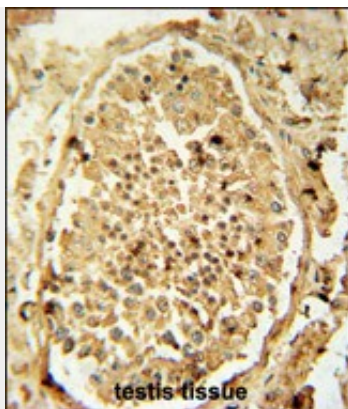
**PDHA2 Antibody (Center) - Protocols**

Provided below are standard protocols that you may find useful for product applications.

- [Western Blot](#)
- [Blocking Peptides](#)
- [Dot Blot](#)
- [Immunohistochemistry](#)
- [Immunofluorescence](#)
- [Immunoprecipitation](#)
- [Flow Cytometry](#)
- [Cell Culture](#)

**PDHA2 Antibody (Center) - Images**

PDHA2 Antibody (Center) (Cat. #AP10756c) western blot analysis in NCI-H460 cell line lysates (35ug/lane). This demonstrates the PDHA2 antibody detected the PDHA2 protein (arrow).



PDHA2 antibody (Center) (Cat. #AP10756c) immunohistochemistry analysis in formalin fixed and paraffin embedded human testis tissue followed by peroxidase conjugation of the secondary antibody and DAB staining. This data demonstrates the use of the PDHA2 antibody (Center) for immunohistochemistry. Clinical relevance has not been evaluated.

#### **PDHA2 Antibody (Center) - Background**

The pyruvate dehydrogenase complex catalyzes the overall conversion of pyruvate to acetyl-CoA and CO<sub>2</sub>. It contains multiple copies of three enzymatic components: pyruvate dehydrogenase (E1), dihydrolipoamide acetyltransferase (E2) and lipoamide dehydrogenase (E3).

#### **PDHA2 Antibody (Center) - References**

- Pinheiro, A., et al. Mol. Genet. Metab. 99(4):425-430(2010)
- Olsen, J.V., et al. Cell 127(3):635-648(2006)
- Olsen, J.V., et al. Cell 127(3):635-648(2006)
- Caruso, M., et al. J. Biol. Chem. 276(48):45088-45097(2001)
- Jacobia, S.J., et al. Arch. Biochem. Biophys. 395(1):121-128(2001)