

AL2SA Antibody (N-term)
Affinity Purified Rabbit Polyclonal Antibody (Pab)
Catalog # AP10777a**Specification**

AL2SA Antibody (N-term) - Product Information

Application	FC, WB,E
Primary Accession	Q53TS8
Other Accession	NP_689738.3
Reactivity	Human
Host	Rabbit
Clonality	Polyclonal
Isotype	Rabbit IgG
Calculated MW	209056
Antigen Region	152-181

AL2SA Antibody (N-term) - Additional Information**Gene ID** 151254**Other Names**

Amyotrophic lateral sclerosis 2 chromosomal region candidate gene 11 protein, ALS2CR11

Target/Specificity

This AL2SA antibody is generated from rabbits immunized with a KLH conjugated synthetic peptide between 152-181 amino acids from the N-terminal region of human AL2SA.

Dilution

FC~~1:10~50

WB~~1:1000

E~~Use at an assay dependent concentration.

Format

Purified polyclonal antibody supplied in PBS with 0.09% (W/V) sodium azide. This antibody is purified through a protein A column, followed by peptide affinity purification.

Storage

Maintain refrigerated at 2-8°C for up to 2 weeks. For long term storage store at -20°C in small aliquots to prevent freeze-thaw cycles.

Precautions

AL2SA Antibody (N-term) is for research use only and not for use in diagnostic or therapeutic procedures.

AL2SA Antibody (N-term) - Protein Information**Name** C2CD6 ([HGNC:14438](#))

Function Auxiliary component of the CatSper complex, a complex involved in sperm cell hyperactivation. Sperm cell hyperactivation is needed for sperm motility which is essential late in the preparation of sperm for fertilization. Required for CatSper complex targeting and trafficking into the quadrilinear nanodomains. Targets the preassembled CatSper complexes to elongating flagella, where it links the channel- carrying vesicles and motor proteins.

Cellular Location

Cell projection, cilium, flagellum membrane {ECO:0000250|UniProtKB:E9Q9F6}. Note=Specifically located in the principal piece of sperm tail. {ECO:0000250|UniProtKB:E9Q9F6}

Tissue Location

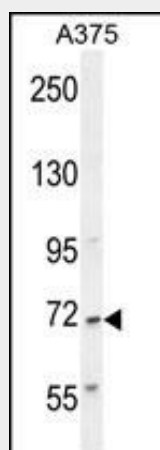
Expressed in testis (at protein level).

AL2SA Antibody (N-term) - Protocols

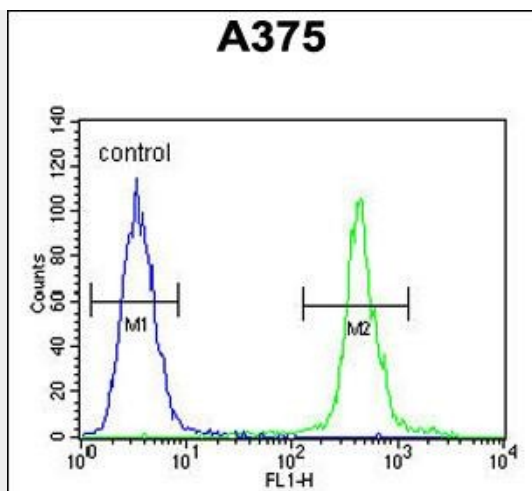
Provided below are standard protocols that you may find useful for product applications.

- [Western Blot](#)
- [Blocking Peptides](#)
- [Dot Blot](#)
- [Immunohistochemistry](#)
- [Immunofluorescence](#)
- [Immunoprecipitation](#)
- [Flow Cytometry](#)
- [Cell Culture](#)

AL2SA Antibody (N-term) - Images



AL2SA Antibody (N-term) (Cat. #AP10777a) western blot analysis in A375 cell line lysates (35ug/lane). This demonstrates the AL2SA antibody detected the AL2SA protein (arrow).



AL2SA Antibody (N-term) (Cat. #AP10777a) flow cytometric analysis of A375 cells (right histogram) compared to a negative control cell (left histogram). FITC-conjugated goat-anti-rabbit secondary antibodies were used for the analysis.

AL2SA Antibody (N-term) - References

- Hillier, L.W., et al. Nature 434(7034):724-731(2005)
Jia, L., et al. Genomics 79(1):7-17(2002)
Hadano, S., et al. Nat. Genet. 29(2):166-173(2001)