

CO027 Antibody (C-term)
Affinity Purified Rabbit Polyclonal Antibody (Pab)
Catalog # AP10811b**Specification**

CO027 Antibody (C-term) - Product Information

Application	FC, WB,E
Primary Accession	O2M3C6
Other Accession	O9N0B5 , NP_689548.2
Reactivity	Human, Mouse
Predicted	Monkey
Host	Rabbit
Clonality	Polyclonal
Isotype	Rabbit IgG
Calculated MW	58444
Antigen Region	503-531

CO027 Antibody (C-term) - Additional Information**Gene ID** 123591**Other Names**

Transmembrane protein C15orf27, C15orf27

Target/Specificity

This CO027 antibody is generated from rabbits immunized with a KLH conjugated synthetic peptide between 503-531 amino acids from the C-terminal region of human CO027.

Dilution

FC~~1:10~50

WB~~1:1000

E~~Use at an assay dependent concentration.

Format

Purified polyclonal antibody supplied in PBS with 0.09% (W/V) sodium azide. This antibody is purified through a protein A column, followed by peptide affinity purification.

Storage

Maintain refrigerated at 2-8°C for up to 2 weeks. For long term storage store at -20°C in small aliquots to prevent freeze-thaw cycles.

Precautions

CO027 Antibody (C-term) is for research use only and not for use in diagnostic or therapeutic procedures.

CO027 Antibody (C-term) - Protein Information**Name** TMEM266 ([HGNC:26763](#))

Function Voltage-sensor protein present on the post-synaptic side of glutamatergic mossy fibers and granule cells in the cerebellum (PubMed:[25165868](#), PubMed:[30810529](#)). Despite the presence of a voltage- sensor segment, does not form a functional ion channel and its precise role remains unclear (PubMed:[25165868](#), PubMed:[30810529](#)). Undergoes both rapid and slow structural rearrangements in response to changes in voltage (PubMed:[30810529](#)). Contains a zinc-binding site that can regulate the slow conformational transition (PubMed:[30810529](#)).

Cellular Location

Cell membrane; Multi-pass membrane protein. Cell projection, dendrite Perikaryon. Note=Present in the dendrites and soma of cerebellar granule neurons, but not in their axon

Tissue Location

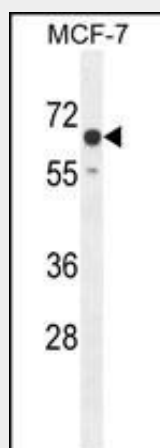
Mainly expressed in the cerebellum (PubMed:[25165868](#)). Also expressed in cerebral cortex, skeletal muscle and thyroid, but at much lower levels (PubMed:[25165868](#))

CO027 Antibody (C-term) - Protocols

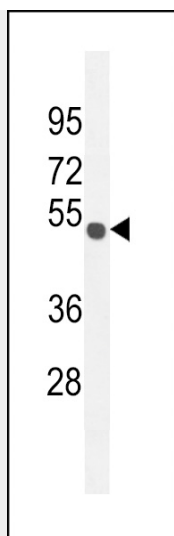
Provided below are standard protocols that you may find useful for product applications.

- [Western Blot](#)
- [Blocking Peptides](#)
- [Dot Blot](#)
- [Immunohistochemistry](#)
- [Immunofluorescence](#)
- [Immunoprecipitation](#)
- [Flow Cytometry](#)
- [Cell Culture](#)

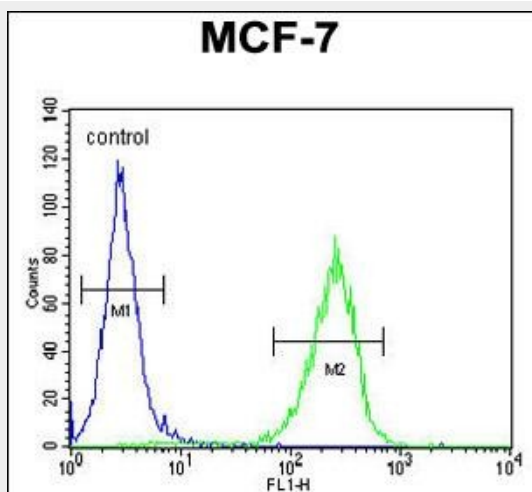
CO027 Antibody (C-term) - Images



CO027 Antibody (C-term) (Cat. #AP10811b) western blot analysis in MCF-7 cell line lysates (35ug/lane). This demonstrates the CO027 antibody detected the CO027 protein (arrow).



CO027 Antibody (C-term) (Cat. #AP10811b) western blot analysis in mouse Neuro-2a cell line lysates (35ug/lane). This demonstrates the CO027 antibody detected the CO027 protein (arrow).



CO027 Antibody (C-term) (Cat. #AP10811b) flow cytometric analysis of MCF-7 cells (right histogram) compared to a negative control cell (left histogram). FITC-conjugated goat-anti-rabbit secondary antibodies were used for the analysis.

CO027 Antibody (C-term) - References

Zody, M.C., et al. Nature 440(7084):671-675(2006)