

**HARB1 Antibody (N-term)**  
**Affinity Purified Rabbit Polyclonal Antibody (Pab)**  
**Catalog # AP11152a****Specification**

---

**HARB1 Antibody (N-term) - Product Information**

Application	WB, IHC-P,E
Primary Accession	<a href="#">Q96MB7</a>
Other Accession	<a href="#">B0BN95</a> , <a href="#">Q8BR93</a> , <a href="#">Q17QR8</a> , <a href="#">NP_776172.1</a>
Reactivity	Mouse
Predicted	Bovine, Rat
Host	Rabbit
Clonality	Polyclonal
Isotype	Rabbit IgG
Calculated MW	39146
Antigen Region	4-33

**HARB1 Antibody (N-term) - Additional Information****Gene ID** 283254**Other Names**

Putative nuclease HARBI1, 31--, Harbinger transposase-derived nuclease, HARBI1, C11orf77

**Target/Specificity**

This HARB1 antibody is generated from rabbits immunized with a KLH conjugated synthetic peptide between 4-33 amino acids from the N-terminal region of human HARB1.

**Dilution**

WB~~1:1000

IHC-P~~1:50~100

E~~Use at an assay dependent concentration.

**Format**

Purified polyclonal antibody supplied in PBS with 0.09% (W/V) sodium azide. This antibody is purified through a protein A column, followed by peptide affinity purification.

**Storage**

Maintain refrigerated at 2-8°C for up to 2 weeks. For long term storage store at -20°C in small aliquots to prevent freeze-thaw cycles.

**Precautions**

HARB1 Antibody (N-term) is for research use only and not for use in diagnostic or therapeutic procedures.

**HARB1 Antibody (N-term) - Protein Information****Name** HARBI1

**Synonyms** C11orf77

**Function** Transposase-derived protein that may have nuclease activity (Potential). Does not have transposase activity.

**Cellular Location**

Nucleus. Cytoplasm. Note=Interaction with NAIF1 promotes translocation to the nucleus

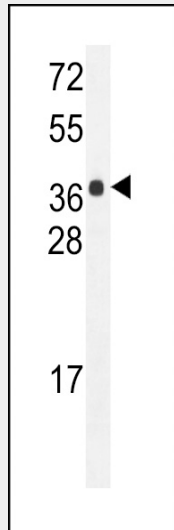
**Tissue Location**

Detected in brain, eye, nerve tissue, kidney and lung.

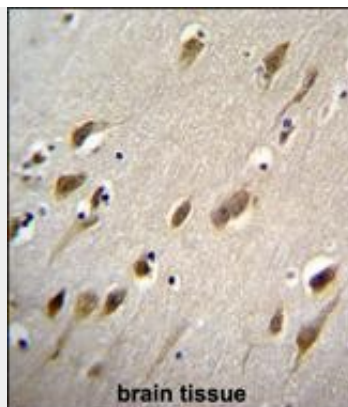
**HARB1 Antibody (N-term) - Protocols**

Provided below are standard protocols that you may find useful for product applications.

- [Western Blot](#)
- [Blocking Peptides](#)
- [Dot Blot](#)
- [Immunohistochemistry](#)
- [Immunofluorescence](#)
- [Immunoprecipitation](#)
- [Flow Cytometry](#)
- [Cell Culture](#)

**HARB1 Antibody (N-term) - Images**

HARB1 Antibody (N-term) (Cat. #AP11152a) western blot analysis in mouse bladder tissue lysates (35ug/lane). This demonstrates the HARB1 antibody detected the HARB1 protein (arrow).



HARB1 Antibody (N-term) (Cat. #AP11152a) immunohistochemistry analysis in formalin fixed and paraffin embedded human brain tissue followed by peroxidase conjugation of the secondary antibody and DAB staining. This data demonstrates the use of HARB1 Antibody (N-term) for immunohistochemistry. Clinical relevance has not been evaluated.

#### **HARB1 Antibody (N-term) - Background**

The specific function of C11ORF77 remains unknown. It is potentially a transposase-derived protein that may have nuclease activity. It does not however have transposase activity. C11ORF77 is detected in brain, eye, nerve tissue, kidney and lung.

#### **HARB1 Antibody (N-term) - References**

Ferreira, R.C., et al. Nat. Genet. 42(9):777-780(2010)  
Sinzelle, L., et al. Proc. Natl. Acad. Sci. U.S.A. 105(12):4715-4720(2008)  
Oh, J.H., et al. Mamm. Genome 16(12):942-954(2005)  
Kapitonov, V.V., et al. DNA Cell Biol. 23(5):311-324(2004)