

**KRBA2 Antibody (Center)**  
**Affinity Purified Rabbit Polyclonal Antibody (Pab)**  
**Catalog # AP11433c****Specification**

---

**KRBA2 Antibody (Center) - Product Information**

Application	IF, WB,E
Primary Accession	<a href="#">Q6ZNG9</a>
Other Accession	<a href="#">NP_998762.1</a>
Reactivity	Human
Host	Rabbit
Clonality	Polyclonal
Isotype	Rabbit IgG
Antigen Region	157-186

**KRBA2 Antibody (Center) - Additional Information****Gene ID** 124751**Other Names**

KRAB-A domain-containing protein 2, KRBA2

**Target/Specificity**

This KRBA2 antibody is generated from rabbits immunized with a KLH conjugated synthetic peptide between 157-186 amino acids from the Central region of human KRBA2.

**Dilution**

IF~~1:25

WB~~1:1000

E~~Use at an assay dependent concentration.

**Format**

Purified polyclonal antibody supplied in PBS with 0.09% (W/V) sodium azide. This antibody is purified through a protein A column, followed by peptide affinity purification.

**Storage**

Maintain refrigerated at 2-8°C for up to 2 weeks. For long term storage store at -20°C in small aliquots to prevent freeze-thaw cycles.

**Precautions**

KRBA2 Antibody (Center) is for research use only and not for use in diagnostic or therapeutic procedures.

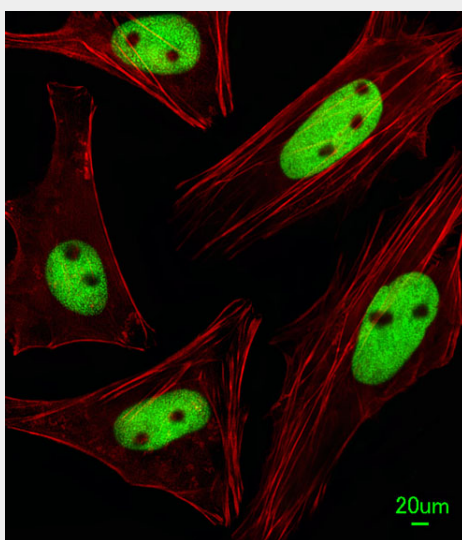
**KRBA2 Antibody (Center) - Protein Information****Name** KRBA2

## KRBA2 Antibody (Center) - Protocols

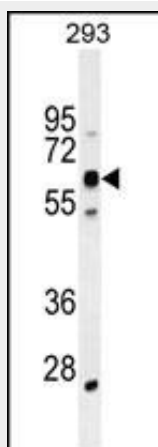
Provided below are standard protocols that you may find useful for product applications.

- [Western Blot](#)
- [Blocking Peptides](#)
- [Dot Blot](#)
- [Immunohistochemistry](#)
- [Immunofluorescence](#)
- [Immunoprecipitation](#)
- [Flow Cytometry](#)
- [Cell Culture](#)

## KRBA2 Antibody (Center) - Images



Immunofluorescent analysis of HeLa cells, using KRBA2 Antibody (Center) (Cat. #AP11433c). AP11433c was diluted at 1:25 dilution. Alexa Fluor 488-conjugated goat anti-rabbit IgG at 1:400 dilution was used as the secondary antibody (green). Cytoplasmic actin was counterstained with Dylight Fluor® 554 (red) conjugated Phalloidin (red).



KRBA2 Antibody (Center) (Cat. #AP11433c) western blot analysis in 293 cell line lysates (35ug/lane). This demonstrates the KCat. #A2 antibody detected the KCat. #A2 protein (arrow).

## KRBA2 Antibody (Center) - References

Matsuoka, S., et al. Science 316(5828):1160-1166(2007)

Strausberg, R.L., et al. Proc. Natl. Acad. Sci. U.S.A. 99(26):16899-16903(2002)