

SCUBE2 Antibody (Center N266)
Affinity Purified Rabbit Polyclonal Antibody (Pab)
Catalog # AP11462c**Specification**

SCUBE2 Antibody (Center N266) - Product Information

Application	WB, IHC-P, IF,E
Primary Accession	O9NQ36
Other Accession	NP_066025.2 , NP_001164161.1
Reactivity	Human
Host	Rabbit
Clonality	Polyclonal
Isotype	Rabbit IgG
Antigen Region	251-280

SCUBE2 Antibody (Center N266) - Additional Information**Gene ID** 57758**Other Names**

Signal peptide, CUB and EGF-like domain-containing protein 2, Protein CEGP1, SCUBE2, CEGP1

Target/Specificity

This SCUBE2 antibody is generated from rabbits immunized with a KLH conjugated synthetic peptide between 251-280 amino acids from the Central region of human SCUBE2.

Dilution

WB~~1:1000
IHC-P~~1:50~100
IF~~1:10~50
E~~Use at an assay dependent concentration.

Format

Purified polyclonal antibody supplied in PBS with 0.09% (W/V) sodium azide. This antibody is purified through a protein A column, followed by peptide affinity purification.

Storage

Maintain refrigerated at 2-8°C for up to 2 weeks. For long term storage store at -20°C in small aliquots to prevent freeze-thaw cycles.

Precautions

SCUBE2 Antibody (Center N266) is for research use only and not for use in diagnostic or therapeutic procedures.

SCUBE2 Antibody (Center N266) - Protein Information**Name** SCUBE2 ([HGNC:30425](#))

Synonyms CEGP1

Function Lipid-binding protein required for SHH long-range signaling by binding to the dually lipid-modified SHH (ShhNp) and by promoting ShhNp mobilization, solubilization and release from the cell membrane (PubMed:[22677548](#), PubMed:[22902404](#)). Acts by enhancing the proteolytic processing (shedding) of the lipid-modified N- and C- terminal of ShhNp at the cell surface (PubMed:[24522195](#)). Synergizes with DISP1 to increase SHH secretion (PubMed:[22902404](#)). Probable cell surface coreceptor for VEGFR2 involved in VEGFR2-mediated angiogenesis (PubMed:[27834687](#)).

Cellular Location

Secreted. Cell surface. Note=Secreted and tethered at the cell surface (PubMed:19480626).

Tissue Location

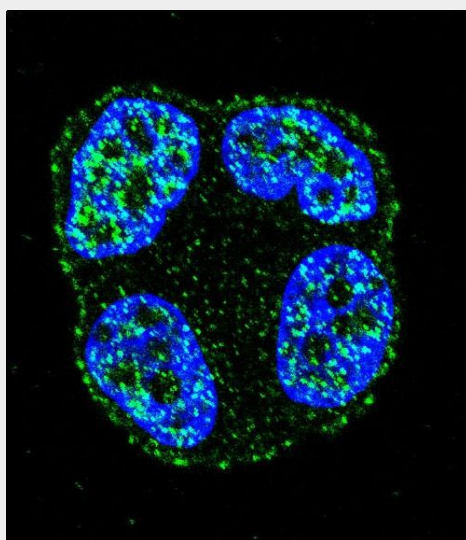
Expressed in a broad spectrum of adult tissues (PubMed:12270931).

SCUBE2 Antibody (Center N266) - Protocols

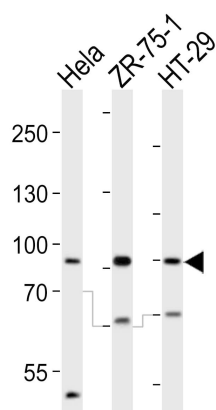
Provided below are standard protocols that you may find useful for product applications.

- [Western Blot](#)
- [Blocking Peptides](#)
- [Dot Blot](#)
- [Immunohistochemistry](#)
- [Immunofluorescence](#)
- [Immunoprecipitation](#)
- [Flow Cytometry](#)
- [Cell Culture](#)

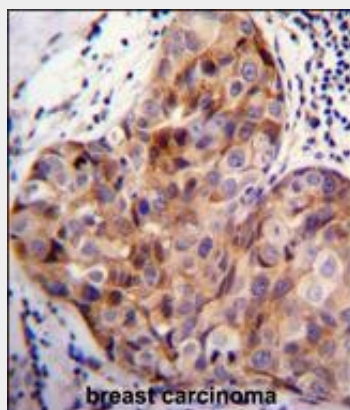
SCUBE2 Antibody (Center N266) - Images



Confocal immunofluorescent analysis of SCUBE2 Antibody (Center N266)(Cat#AP11462c) with ZR-75-1 cell followed by Alexa Fluor 488-conjugated goat anti-rabbit IgG (green). DAPI was used to stain the cell nuclear (blue).



Western blot analysis of lysates from HeLa, ZR-75-1, HT-29 cell line (from left to right), using SCUBE2 Antibody (Center N266)(Cat. #AP11462c). AP11462c was diluted at 1:1000 at each lane. A goat anti-rabbit IgG H&L(HRP) at 1:10000 dilution was used as the secondary antibody. Lysates at 20ug per lane.



SCUBE2 Antibody (Center N266) (Cat. #AP11462c) immunohistochemistry analysis in formalin fixed and paraffin embedded human breast carcinoma followed by peroxidase conjugation of the secondary antibody and DAB staining. This data demonstrates the use of SCUBE2 Antibody (Center N266) for immunohistochemistry. Clinical relevance has not been evaluated.

SCUBE2 Antibody (Center N266) - References

- Rose, J.E., et al. Mol. Med. 16 (7-8), 247-253 (2010) :
- Guey, L.T., et al. Eur. Urol. 57(2):283-292(2010)
- Hosgood, H.D. III, et al. Respir Med 103(12):1866-1870(2009)
- Tsai, M.T., et al. Biochem. J. 422(1):119-128(2009)
- Shen, M., et al. Environ. Mol. Mutagen. 50(4):285-290(2009)