

ROPN1L Antibody (N-term)
Affinity Purified Rabbit Polyclonal Antibody (Pab)
Catalog # AP11844a**Specification**

ROPN1L Antibody (N-term) - Product Information

Application	IHC-P, WB,E
Primary Accession	Q96C74
Other Accession	Q9EQ00 , Q4R760 , Q3T024 , NP_114122.2
Reactivity	Mouse
Predicted	Bovine, Monkey
Host	Rabbit
Clonality	Polyclonal
Isotype	Rabbit IgG
Calculated MW	26107
Antigen Region	32-60

ROPN1L Antibody (N-term) - Additional Information**Gene ID** 83853**Other Names**

Ropporin-1-like protein, ROPN1-like protein, AKAP-associated sperm protein, ROPN1L, ASP

Target/Specificity

This ROPN1L antibody is generated from rabbits immunized with a KLH conjugated synthetic peptide between 32-60 amino acids from the N-terminal region of human ROPN1L.

Dilution

IHC-P~~1:10~50

WB~~1:1000

E~~Use at an assay dependent concentration.

Format

Purified polyclonal antibody supplied in PBS with 0.09% (W/V) sodium azide. This antibody is purified through a protein A column, followed by peptide affinity purification.

Storage

Maintain refrigerated at 2-8°C for up to 2 weeks. For long term storage store at -20°C in small aliquots to prevent freeze-thaw cycles.

Precautions

ROPN1L Antibody (N-term) is for research use only and not for use in diagnostic or therapeutic procedures.

ROPN1L Antibody (N-term) - Protein Information**Name** ROPN1L

Synonyms ASP, RSPH11 {ECO:0000303|PubMed:27120127}

Function Functions as part of axonemal radial spoke complexes that play an important part in the motility of sperm and cilia. Important for male fertility. With ROPN1, involved in fibrous sheath integrity and sperm motility, plays a role in PKA-dependent signaling processes required for spermatozoa capacitation.

Cellular Location

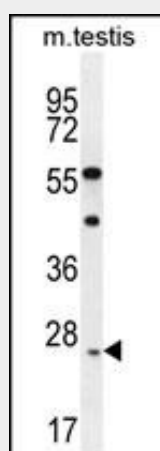
Cell projection, cilium, flagellum {ECO:0000250|UniProtKB:Q9EQ00}. Cell projection, cilium

ROPN1L Antibody (N-term) - Protocols

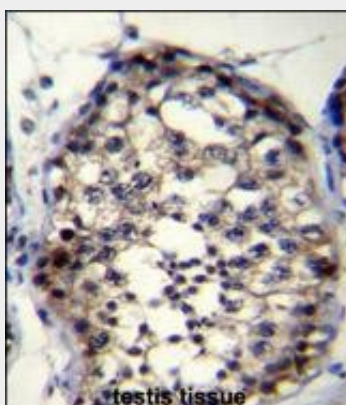
Provided below are standard protocols that you may find useful for product applications.

- [Western Blot](#)
- [Blocking Peptides](#)
- [Dot Blot](#)
- [Immunohistochemistry](#)
- [Immunofluorescence](#)
- [Immunoprecipitation](#)
- [Flow Cytometry](#)
- [Cell Culture](#)

ROPN1L Antibody (N-term) - Images



ROPN1L Antibody (N-term) (Cat. #AP11844a) western blot analysis in mouse testis tissue lysates (35ug/lane). This demonstrates the ROPN1L antibody detected the ROPN1L protein (arrow).



ROPN1L Antibody (N-term) (Cat. #AP11844a) immunohistochemistry analysis in formalin fixed and paraffin embedded human testis tissue followed by peroxidase conjugation of the secondary antibody and DAB staining. This data demonstrates the use of ROPN1L Antibody (N-term) for immunohistochemistry. Clinical relevance has not been evaluated.

ROPN1L Antibody (N-term) - Background

The protein encoded by this gene is a sperm protein, which interacts with A-kinase anchoring protein, AKAP3, through the amphipathic helix region of AKAP3. Type II regulatory subunit of cAMP-dependent protein kinase (PKARII) also binds to this helix domain of AKAP3, which allows PKARII to be targeted to specific subcellular compartments. It is suggested that sperm contains several proteins that bind to AKAPs in a manner similar to PKARII, and this encoded protein may be one of them.

ROPN1L Antibody (N-term) - References

Carr, D.W., et al. J. Biol. Chem. 276(20):17332-17338(2001)