

**DUS1L Antibody (C-term)**  
**Affinity Purified Rabbit Polyclonal Antibody (Pab)**  
**Catalog # AP12520b****Specification**

---

**DUS1L Antibody (C-term) - Product Information**

Application	WB, IHC-P,E
Primary Accession	<a href="#">Q6P1R4</a>
Other Accession	<a href="#">NP_071439.3</a>
Reactivity	Human
Host	Rabbit
Clonality	Polyclonal
Isotype	Rabbit IgG
Calculated MW	53230
Antigen Region	321-349

**DUS1L Antibody (C-term) - Additional Information****Gene ID** 64118**Other Names**

tRNA-dihydrouridine(16/17) synthase [NAD(P)(+)]-like, 131-, tRNA-dihydrouridine synthase 1-like, DUS1L

**Target/Specificity**

This DUS1L antibody is generated from rabbits immunized with a KLH conjugated synthetic peptide between 321-349 amino acids from the C-terminal region of human DUS1L.

**Dilution**

WB~~1:1000

IHC-P~~1:10~50

E~~Use at an assay dependent concentration.

**Format**

Purified polyclonal antibody supplied in PBS with 0.09% (W/V) sodium azide. This antibody is purified through a protein A column, followed by peptide affinity purification.

**Storage**

Maintain refrigerated at 2-8°C for up to 2 weeks. For long term storage store at -20°C in small aliquots to prevent freeze-thaw cycles.

**Precautions**

DUS1L Antibody (C-term) is for research use only and not for use in diagnostic or therapeutic procedures.

**DUS1L Antibody (C-term) - Protein Information****Name** DUS1L ([HGNC:30086](#))

**Function** Catalyzes the synthesis of dihydrouridine, a modified base found in the D-loop of most tRNAs (PubMed:[34798057](#), PubMed:[39354220](#)). Specifically modifies U16 and U17 in cytoplasmic tRNAs (PubMed:[39354220](#)). Affects the level of some mature tRNA and thereby the total cellular translation (PubMed:[39354220](#)).

**Cellular Location**

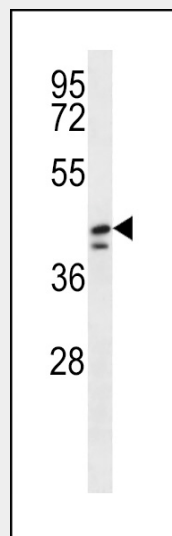
Cytoplasm. Nucleus. Note=Predominantly cytoplasmic localization with a minor population localized to the nucleus

**DUS1L Antibody (C-term) - Protocols**

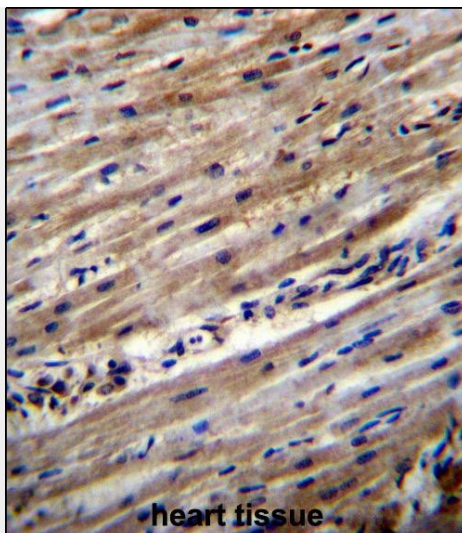
Provided below are standard protocols that you may find useful for product applications.

- [Western Blot](#)
- [Blocking Peptides](#)
- [Dot Blot](#)
- [Immunohistochemistry](#)
- [Immunofluorescence](#)
- [Immunoprecipitation](#)
- [Flow Cytometry](#)
- [Cell Culture](#)

**DUS1L Antibody (C-term) - Images**



DUS1L Antibody (C-term) (Cat. #AP12520b) western blot analysis in HepG2, NCI-H460, NCI-H292, WiDr, HeLa, U251 cell line lysates (35ug/lane). This demonstrates the DUS1L antibody detected the DUS1L protein (arrow).



DUS1L Antibody (C-term) (Cat. #AP12520b) immunohistochemistry analysis in formalin fixed and paraffin embedded human heart tissue followed by peroxidase conjugation of the secondary antibody and DAB staining. This data demonstrates the use of DUS1L Antibody (C-term) for immunohistochemistry. Clinical relevance has not been evaluated.

#### **DUS1L Antibody (C-term) - Background**

DUS1L catalyzes the synthesis of dihydrouridine, a modified base found in the D-loop of most tRNAs (By similarity).

#### **DUS1L Antibody (C-term) - References**

Gerhard, D.S., et al. Genome Res. 14 (10B), 2121-2127 (2004) :