

**TAS2R1 Antibody (C-term)**  
**Affinity Purified Rabbit Polyclonal Antibody (Pab)**  
**Catalog # AP12981B****Specification**

---

**TAS2R1 Antibody (C-term) - Product Information**

Application	WB,E
Primary Accession	<a href="#">O9NYW7</a>
Other Accession	<a href="#">NP_062545.1</a>
Reactivity	Human
Host	Rabbit
Clonality	Polyclonal
Isotype	Rabbit IgG
Calculated MW	34333
Antigen Region	267-296

**TAS2R1 Antibody (C-term) - Additional Information****Gene ID** 50834**Other Names**

Taste receptor type 2 member 1, T2R1, Taste receptor family B member 7, TRB7, TAS2R1

**Target/Specificity**

This TAS2R1 antibody is generated from rabbits immunized with a KLH conjugated synthetic peptide between 267-296 amino acids from the C-terminal region of human TAS2R1.

**Dilution**

WB~~1:1000

E~~Use at an assay dependent concentration.

**Format**

Purified polyclonal antibody supplied in PBS with 0.09% (W/V) sodium azide. This antibody is purified through a protein A column, followed by peptide affinity purification.

**Storage**

Maintain refrigerated at 2-8°C for up to 2 weeks. For long term storage store at -20°C in small aliquots to prevent freeze-thaw cycles.

**Precautions**

TAS2R1 Antibody (C-term) is for research use only and not for use in diagnostic or therapeutic procedures.

**TAS2R1 Antibody (C-term) - Protein Information****Name** TAS2R1**Function** Receptor that may play a role in the perception of bitterness and is gustducin-linked.

May play a role in sensing the chemical composition of the gastrointestinal content. The activity of this receptor may stimulate alpha gustducin, mediate PLC-beta-2 activation and lead to the gating of TRPM5.

**Cellular Location**

Membrane; Multi-pass membrane protein.

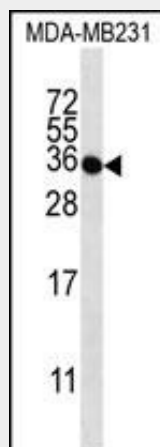
**Tissue Location**

Expressed in subsets of taste receptor cells of the tongue and palate epithelium and exclusively in gustducin-positive cells

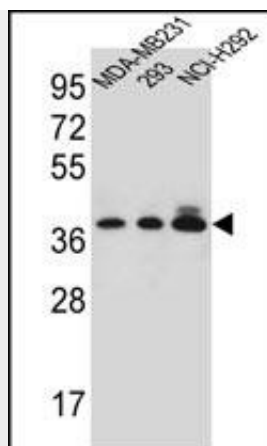
**TAS2R1 Antibody (C-term) - Protocols**

Provided below are standard protocols that you may find useful for product applications.

- [Western Blot](#)
- [Blocking Peptides](#)
- [Dot Blot](#)
- [Immunohistochemistry](#)
- [Immunofluorescence](#)
- [Immunoprecipitation](#)
- [Flow Cytometry](#)
- [Cell Culture](#)

**TAS2R1 Antibody (C-term) - Images**

TAS2R1 Antibody (C-term) (Cat. #AP12981b) western blot analysis in MDA-MB231 cell line lysates (35ug/lane). This demonstrates the TAS2R1 antibody detected the TAS2R1 protein (arrow).



TAS2R1 Antibody (C-term) (Cat. #AP12981b) western blot analysis in MDA-MB231,293,NCI-H292 cell line lysates (35ug/lane).This demonstrates the TAS2R1 antibody detected the TAS2R1 protein (arrow).

#### **TAS2R1 Antibody (C-term) - Background**

This gene encodes a member of a family of candidate taste receptors that are members of the G protein-coupled receptor superfamily and that are specifically expressed by taste receptor cells of the tongue and palate epithelia. This intronless taste receptor gene encodes a 7-transmembrane receptor protein, functioning as a bitter taste receptor. This gene is mapped to chromosome 5p15, the location of a genetic locus (PROP) that controls the detection of the bitter compound 6-n-propyl-2-thiouracil.

#### **TAS2R1 Antibody (C-term) - References**

Upadhyaya, J., et al. Biochem. Biophys. Res. Commun. 398(2):331-335(2010)  
Weiss, L.A., et al. Nature 461(7265):802-808(2009)  
Go, Y., et al. Genetics 170(1):313-326(2005)  
Fischer, A., et al. Mol. Biol. Evol. 22(3):432-436(2005)  
Zhang, Y., et al. Cell 112(3):293-301(2003)