

**LIMS2 Antibody (C-term)**  
**Affinity Purified Rabbit Polyclonal Antibody (Pab)**  
**Catalog # AP13597b****Specification**

---

**LIMS2 Antibody (C-term) - Product Information**

Application	WB,E
Primary Accession	<a href="#">O7Z4I7</a>
Other Accession	<a href="#">NP_001154875.1</a> , <a href="#">NP_060450.2</a> , <a href="#">NP_001129509.2</a> , <a href="#">NP_001154876.1</a>
Reactivity	Mouse
Host	Rabbit
Clonality	Polyclonal
Isotype	Rabbit IgG
Calculated MW	38916
Antigen Region	309-337

**LIMS2 Antibody (C-term) - Additional Information****Gene ID** 55679**Other Names**

LIM and senescent cell antigen-like-containing domain protein 2, LIM-like protein 2, Particularly interesting new Cys-His protein 2, PINCH-2, LIMS2, PINCH2

**Target/Specificity**

This LIMS2 antibody is generated from rabbits immunized with a KLH conjugated synthetic peptide between 309-337 amino acids from the C-terminal region of human LIMS2.

**Dilution**

WB~~1:1000

E~~Use at an assay dependent concentration.

**Format**

Purified polyclonal antibody supplied in PBS with 0.09% (W/V) sodium azide. This antibody is purified through a protein A column, followed by peptide affinity purification.

**Storage**

Maintain refrigerated at 2-8°C for up to 2 weeks. For long term storage store at -20°C in small aliquots to prevent freeze-thaw cycles.

**Precautions**

LIMS2 Antibody (C-term) is for research use only and not for use in diagnostic or therapeutic procedures.

**LIMS2 Antibody (C-term) - Protein Information****Name** LIMS2

### Synonyms PINCH2

**Function** Adapter protein in a cytoplasmic complex linking beta- integrins to the actin cytoskeleton, bridges the complex to cell surface receptor tyrosine kinases and growth factor receptors. Plays a role in modulating cell spreading and migration.

### Cellular Location

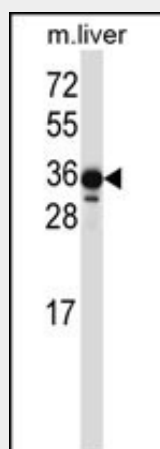
Nucleus. Cell junction, focal adhesion. Cell membrane; Peripheral membrane protein; Cytoplasmic side

### LIMS2 Antibody (C-term) - Protocols

Provided below are standard protocols that you may find useful for product applications.

- [Western Blot](#)
- [Blocking Peptides](#)
- [Dot Blot](#)
- [Immunohistochemistry](#)
- [Immunofluorescence](#)
- [Immunoprecipitation](#)
- [Flow Cytometry](#)
- [Cell Culture](#)

### LIMS2 Antibody (C-term) - Images



LIMS2 Antibody (C-term) (Cat. #AP13597b) western blot analysis in mouse liver tissue lysates (35ug/lane). This demonstrates the LIMS2 antibody detected the LIMS2 protein (arrow).

### LIMS2 Antibody (C-term) - Background

LIMS2 is a focal adhesion protein that associates with integrin-linked kinase (ILK; MIM 602366), a multidomain protein that mediates multiple protein-protein interactions at adhesion sites between cells and the extracellular matrix (ECM). [supplied by OMIM].

### LIMS2 Antibody (C-term) - References

Davila, S., et al. Genes Immun. 11(3):232-238(2010)  
Kim, S.K., et al. Biochem. Biophys. Res. Commun. 349(3):1032-1040(2006)

Zhang, Y., et al. J. Biol. Chem. 277(41):38328-38338(2002)  
Tu, Y., et al. J. Cell Biol. 153(3):585-598(2001)