

FCGR2A Antibody (C-term)
Affinity Purified Rabbit Polyclonal Antibody (Pab)
Catalog # AP13724b**Specification**

FCGR2A Antibody (C-term) - Product Information

Application	WB,E
Primary Accession	P12318
Other Accession	NP_001129691.1
Reactivity	Human
Host	Rabbit
Clonality	Polyclonal
Isotype	Rabbit IgG
Calculated MW	35001
Antigen Region	256-285

FCGR2A Antibody (C-term) - Additional Information**Gene ID** 2212**Other Names**

Low affinity immunoglobulin gamma Fc region receptor II-a, IgG Fc receptor II-a, CDw32, Fc-gamma RII-a, Fc-gamma-RIIa, FcRII-a, CD32, FCGR2A, CD32, FCG2, FCGR2A1, IGFR2

Target/Specificity

This FCGR2A antibody is generated from rabbits immunized with a KLH conjugated synthetic peptide between 256-285 amino acids from the C-terminal region of human FCGR2A.

Dilution

WB~~1:1000

E~~Use at an assay dependent concentration.

Format

Purified polyclonal antibody supplied in PBS with 0.09% (W/V) sodium azide. This antibody is purified through a protein A column, followed by peptide affinity purification.

Storage

Maintain refrigerated at 2-8°C for up to 2 weeks. For long term storage store at -20°C in small aliquots to prevent freeze-thaw cycles.

Precautions

FCGR2A Antibody (C-term) is for research use only and not for use in diagnostic or therapeutic procedures.

FCGR2A Antibody (C-term) - Protein Information**Name** FCGR2A

Synonyms CD32, FCG2, FCGR2A1, IGFR2

Function Binds to the Fc region of immunoglobulins gamma. Low affinity receptor. By binding to IgG it initiates cellular responses against pathogens and soluble antigens. Promotes phagocytosis of opsonized antigens.

Cellular Location

Cell membrane; Single-pass type I membrane protein

Tissue Location

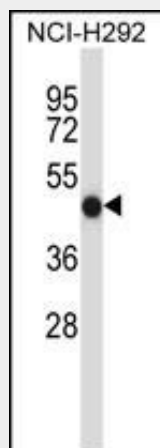
Found on monocytes, neutrophils and eosinophil platelets

FCGR2A Antibody (C-term) - Protocols

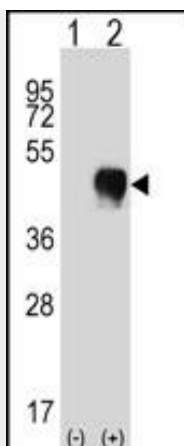
Provided below are standard protocols that you may find useful for product applications.

- [Western Blot](#)
- [Blocking Peptides](#)
- [Dot Blot](#)
- [Immunohistochemistry](#)
- [Immunofluorescence](#)
- [Immunoprecipitation](#)
- [Flow Cytometry](#)
- [Cell Culture](#)

FCGR2A Antibody (C-term) - Images



FCGR2A Antibody (C-term) (Cat. #AP13724b) western blot analysis in NCI-H292 cell line lysates (35ug/lane). This demonstrates the FCGR2A antibody detected the FCGR2A protein (arrow).



Western blot analysis of FCGR2A (arrow) using rabbit polyclonal FCGR2A Antibody (C-term) (Cat. #AP13724b). 293 cell lysates (2 ug/lane) either nontransfected (Lane 1) or transiently transfected (Lane 2) with the FCGR2A gene.

FCGR2A Antibody (C-term) - Background

This gene encodes one member of a family of immunoglobulin Fc receptor genes found on the surface of many immune response cells. The protein encoded by this gene is a cell surface receptor found on phagocytic cells such as macrophages and neutrophils, and is involved in the process of phagocytosis and clearing of immune complexes. Alternative splicing results in multiple transcript variants.

FCGR2A Antibody (C-term) - References

Dornan, D., et al. Blood 116(20):4212-4222(2010)
Zhang, C.Y., et al. J. Biol. Chem. 285(44):34250-34258(2010)
Iwasaki, M., et al. Breast Cancer Res. Treat. (2010) In press :
Ho-Pun-Cheung, A., et al. Pharmacogenomics J. (2010) In press :
Sfar, I., et al. Arch Inst Pasteur Tunis 86 (1-4), 51-62 (2009) :