

**Mouse Cdk3 Antibody (C-term)**  
**Affinity Purified Rabbit Polyclonal Antibody (Pab)**  
**Catalog # AP13803b**

**Specification**

---

**Mouse Cdk3 Antibody (C-term) - Product Information**

Application	WB,E
Primary Accession	<a href="#">Q80YP0</a>
Reactivity	Human
Host	Rabbit
Clonality	Polyclonal
Isotype	Rabbit IgG
Calculated MW	34075
Antigen Region	249-277

**Mouse Cdk3 Antibody (C-term) - Additional Information**

**Other Names**

Cyclin-dependent kinase 3, Cell division protein kinase 3, Cdk3, Cdk3-ps, Cdkn3

**Target/Specificity**

This Mouse Cdk3 antibody is generated from rabbits immunized with a KLH conjugated synthetic peptide between 249-277 amino acids from the C-terminal region of mouse Cdk3.

**Dilution**

WB~~1:1000

E~~Use at an assay dependent concentration.

**Format**

Purified polyclonal antibody supplied in PBS with 0.09% (W/V) sodium azide. This antibody is purified through a protein A column, followed by peptide affinity purification.

**Storage**

Maintain refrigerated at 2-8°C for up to 2 weeks. For long term storage store at -20°C in small aliquots to prevent freeze-thaw cycles.

**Precautions**

Mouse Cdk3 Antibody (C-term) is for research use only and not for use in diagnostic or therapeutic procedures.

**Mouse Cdk3 Antibody (C-term) - Protein Information**

**Name** Cdk3

**Synonyms** Cdk3-ps, Cdkn3

**Function** Serine/threonine-protein kinase that plays a critical role in the control of the eukaryotic cell cycle; involved in G0-G1 and G1-S cell cycle transitions. Interacts with CCNC/cyclin-C during

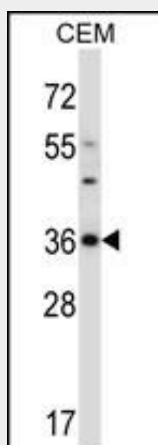
interphase. Phosphorylates histone H1, ATF1, RB1 and CABLES1. ATF1 phosphorylation triggers ATF1 transactivation and transcriptional activities, and promotes cell proliferation and transformation. CDK3/cyclin-C mediated RB1 phosphorylation is required for G0-G1 transition. Promotes G1-S transition probably by contributing to the activation of E2F1, E2F2 and E2F3 in a RB1-independent manner.

### Mouse Cdk3 Antibody (C-term) - Protocols

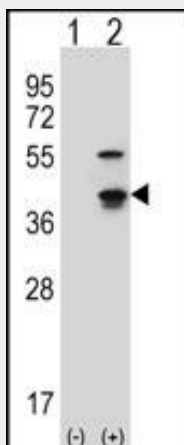
Provided below are standard protocols that you may find useful for product applications.

- [Western Blot](#)
- [Blocking Peptides](#)
- [Dot Blot](#)
- [Immunohistochemistry](#)
- [Immunofluorescence](#)
- [Immunoprecipitation](#)
- [Flow Cytometry](#)
- [Cell Culture](#)

### Mouse Cdk3 Antibody (C-term) - Images



Mouse Cdk3 Antibody (C-term) (Cat. #AP13803b) western blot analysis in CEM cell line lysates (35ug/lane). This demonstrates the Cdk3 antibody detected the Cdk3 protein (arrow).



Western blot analysis of Cdk3 (arrow) using rabbit polyclonal Mouse Cdk3 Antibody (C-term) (Cat.

#AP13803b). 293 cell lysates (2 ug/lane) either nontransfected (Lane 1) or transiently transfected (Lane 2) with the Cdk3 gene.

**Mouse Cdk3 Antibody (C-term) - Background**

Probably involved in the control of the cell cycle. Interacts with a yet unknown type of cyclin. Can phosphorylate histone H1 (By similarity).