

Mouse Myo3b Antibody (N-term)
Affinity Purified Rabbit Polyclonal Antibody (Pab)
Catalog # AP13924a

Specification

Mouse Myo3b Antibody (N-term) - Product Information

Application	WB,E
Primary Accession	Q1EG27
Other Accession	NP_796350.2
Reactivity	Human, Mouse
Host	Rabbit
Clonality	Polyclonal
Isotype	Rabbit IgG
Calculated MW	148099
Antigen Region	300-329

Mouse Myo3b Antibody (N-term) - Additional Information

Gene ID 329421

Other Names

Myosin-IIIb, Myo3b

Target/Specificity

This Mouse Myo3b antibody is generated from rabbits immunized with a KLH conjugated synthetic peptide between 300-329 amino acids from the N-terminal region of mouse Myo3b.

Dilution

WB~~1:1000

E~~Use at an assay dependent concentration.

Format

Purified polyclonal antibody supplied in PBS with 0.09% (W/V) sodium azide. This antibody is purified through a protein A column, followed by peptide affinity purification.

Storage

Maintain refrigerated at 2-8°C for up to 2 weeks. For long term storage store at -20°C in small aliquots to prevent freeze-thaw cycles.

Precautions

Mouse Myo3b Antibody (N-term) is for research use only and not for use in diagnostic or therapeutic procedures.

Mouse Myo3b Antibody (N-term) - Protein Information

Name Myo3b

Function Probable actin-based motor with a protein kinase activity (By similarity). Required for

normal cochlear hair bundle development and hearing. Plays an important role in the early steps of cochlear hair bundle morphogenesis. Influences the number and lengths of stereocilia to be produced and limits the growth of microvilli within the forming auditory hair bundles thereby contributing to the architecture of the hair bundle, including its staircase pattern (PubMed:[26754646](#)). Involved in the elongation of actin in stereocilia tips by transporting the actin regulatory factor ESPN to the plus ends of actin filaments (PubMed:[22264607](#)).

Cellular Location

Cytoplasm, cytoskeleton. Cell projection, stereocilium

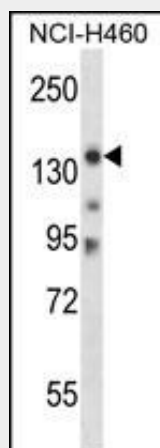
Tissue Location

Expressed in the cochlear hair cells (at protein level) (PubMed:26754646). Expressed in utricle hair bundles (at protein level) (PubMed:26926603).

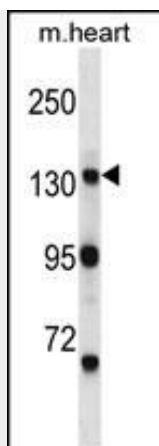
Mouse Myo3b Antibody (N-term) - Protocols

Provided below are standard protocols that you may find useful for product applications.

- [Western Blot](#)
- [Blocking Peptides](#)
- [Dot Blot](#)
- [Immunohistochemistry](#)
- [Immunofluorescence](#)
- [Immunoprecipitation](#)
- [Flow Cytometry](#)
- [Cell Culture](#)

Mouse Myo3b Antibody (N-term) - Images

Mouse Myo3b Antibody (N-term) (Cat. #AP13924a) western blot analysis in NCI-H460 cell line lysates (35ug/lane). This demonstrates the Myo3b antibody detected the Myo3b protein (arrow).



Mouse Myo3b Antibody (N-term) (Cat. #AP13924a) western blot analysis in mouse heart tissue lysates (35ug/lane). This demonstrates the Myo3b antibody detected the Myo3b protein (arrow).

Mouse Myo3b Antibody (N-term) - Background

Probable actin-based motor with a protein kinase activity (By similarity).

Mouse Myo3b Antibody (N-term) - References

Katti, C., et al. Exp. Eye Res. 89(2):224-237(2009)