

HDBP1 Antibody (Center)
Purified Rabbit Polyclonal Antibody (Pab)
Catalog # AP1422c**Specification**

HDBP1 Antibody (Center) - Product Information

Application	WB, IHC-P,E
Primary Accession	Q9NR83
Reactivity	Human
Host	Rabbit
Clonality	Polyclonal
Isotype	Rabbit IgG
Calculated MW	41267
Antigen Region	213-242

HDBP1 Antibody (Center) - Additional Information**Gene ID** 56731**Other Names**

SLC2A4 regulator, GLUT4 enhancer factor, GEF, Huntington disease gene regulatory region-binding protein 1, HDBP-1, SLC2A4RG, HDBP1

Target/Specificity

This HDBP1 antibody is generated from rabbits immunized with a KLH conjugated synthetic peptide between 213-242 amino acids from the Central region of human HDBP1.

Dilution

WB~~1:1000

IHC-P~~1:10~50

E~~Use at an assay dependent concentration.

Format

Purified polyclonal antibody supplied in PBS with 0.09% (W/V) sodium azide. This antibody is purified through a protein G column, followed by dialysis against PBS.

Storage

Maintain refrigerated at 2-8°C for up to 2 weeks. For long term storage store at -20°C in small aliquots to prevent freeze-thaw cycles.

Precautions

HDBP1 Antibody (Center) is for research use only and not for use in diagnostic or therapeutic procedures.

HDBP1 Antibody (Center) - Protein Information**Name** SLC2A4RG

Synonyms HDBP1

Function Transcription factor involved in SLC2A4 and HD gene transactivation. Binds to the consensus sequence 5'-GCCGGCG-3'.

Cellular Location

Cytoplasm. Nucleus. Note=Shuttles between the cytoplasm and the nucleus

Tissue Location

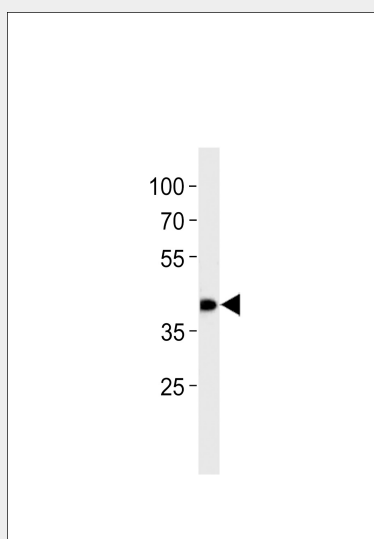
According to PubMed:14630949, expressed in heart, skeletal muscle, liver, kidney and pancreas; undetectable in lung, placenta or brain. According to PubMed:14625278, ubiquitously expressed, with lowest expression in brain and ileum

HDBP1 Antibody (Center) - Protocols

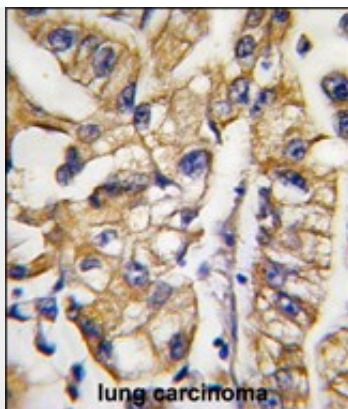
Provided below are standard protocols that you may find useful for product applications.

- [Western Blot](#)
- [Blocking Peptides](#)
- [Dot Blot](#)
- [Immunohistochemistry](#)
- [Immunofluorescence](#)
- [Immunoprecipitation](#)
- [Flow Cytometry](#)
- [Cell Culture](#)

HDBP1 Antibody (Center) - Images



HDBP1 Antibody (Center) (Cat. #AP1422c) western blot analysis in SW620 cell line lysates (35ug/lane). This demonstrates the HDBP1 antibody detected the HDBP1 protein (arrow).



Formalin-fixed and paraffin-embedded human lung carcinoma tissue reacted with HDBP1 Antibody (Center) (Cat.#AP1422c), which was peroxidase-conjugated to the secondary antibody, followed by DAB staining. This data demonstrates the use of this antibody for immunohistochemistry; clinical relevance has not been evaluated.

HDBP1 Antibody (Center) - Background

THDBP1 is a nuclear transcription factor involved in the activation of the solute carrier family 2 member 4 gene. This protein interacts with another transcription factor, myocyte enhancer factor 2, to activate transcription of this gene.

HDBP1 Antibody (Center) - References

Jones, M.R., Fertil. Steril. (2008)
McGee, S.L., FASEB J. 20 (2), 348-349 (2006)
Tanaka, K., J. Biol. Chem. 279 (8), 7275-7286 (2004)

HDBP1 Antibody (Center) - Citations

- [Shuttling SLC2A4RG is regulated by 14-3-3θ to modulate cell survival via caspase-3 and caspase-6 in human glioma.](#)