

LDB1 Antibody (C-term)
Affinity Purified Rabbit Polyclonal Antibody (Pab)
Catalog # AP14866B

Specification

LDB1 Antibody (C-term) - Product Information

Application	WB,E
Primary Accession	Q86U70
Other Accession	P70060 , P70662 , O42252 , O73715 , NP_001106878.1 , NP_003884.1
Reactivity	Human
Predicted	Zebrafish, Chicken, Mouse, Xenopus
Host	Rabbit
Clonality	Polyclonal
Isotype	Rabbit IgG
Calculated MW	46533
Antigen Region	351-379

LDB1 Antibody (C-term) - Additional Information

Gene ID 8861

Other Names

LIM domain-binding protein 1, LDB-1, Carboxyl-terminal LIM domain-binding protein 2, CLIM-2, LIM domain-binding factor CLIM2, hLdb1, Nuclear LIM interactor, LDB1, CLIM2

Target/Specificity

This LDB1 antibody is generated from rabbits immunized with a KLH conjugated synthetic peptide between 351-379 amino acids from the C-terminal region of human LDB1.

Dilution

WB~~1:1000

E~~Use at an assay dependent concentration.

Format

Purified polyclonal antibody supplied in PBS with 0.09% (W/V) sodium azide. This antibody is purified through a protein A column, followed by peptide affinity purification.

Storage

Maintain refrigerated at 2-8°C for up to 2 weeks. For long term storage store at -20°C in small aliquots to prevent freeze-thaw cycles.

Precautions

LDB1 Antibody (C-term) is for research use only and not for use in diagnostic or therapeutic procedures.

LDB1 Antibody (C-term) - Protein Information

Name LDB1

Synonyms CLIM2

Function Binds to the LIM domain of a wide variety of LIM domain- containing transcription factors. May regulate the transcriptional activity of LIM-containing proteins by determining specific partner interactions. Plays a role in the development of interneurons and motor neurons in cooperation with LHX3 and ISL1. Acts synergistically with LHX1/LIM1 in axis formation and activation of gene expression. Acts with LMO2 in the regulation of red blood cell development, maintaining erythroid precursors in an immature state.

Cellular Location

Nucleus {ECO:0000250|UniProtKB:P70662}. Note=Colocalizes with SLK at leading edges {ECO:0000250|UniProtKB:P70662}

Tissue Location

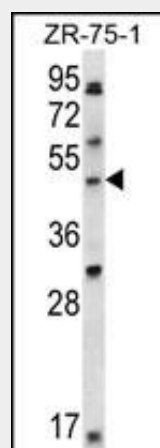
Expressed in a wide range of adult tissues including brain, heart, skeletal muscle, colon, thymus, spleen, kidney, liver, small intestine, lung and peripheral blood leukocytes

LDB1 Antibody (C-term) - Protocols

Provided below are standard protocols that you may find useful for product applications.

- [Western Blot](#)
- [Blocking Peptides](#)
- [Dot Blot](#)
- [Immunohistochemistry](#)
- [Immunofluorescence](#)
- [Immunoprecipitation](#)
- [Flow Cytometry](#)
- [Cell Culture](#)

LDB1 Antibody (C-term) - Images



LDB1 Antibody (C-term) (Cat. #AP14866b) western blot analysis in ZR-75-1 cell line lysates (35ug/lane). This demonstrates the LDB1 antibody detected the LDB1 protein (arrow).

LDB1 Antibody (C-term) - Background

LDB1 binds to the LIM domain of a wide variety of LIM domain-containing transcription factors. May

regulate the transcriptional activity of LIM-containing proteins by determining specific partner interactions. May play a role in the development of motor neurons. Acts synergistically with LHX1/LIM1 in axis formation and activation of gene expression. Acts with LMO2 in the regulation of red blood cell development, maintaining erythroid precursors in an immature state (By similarity).

LDB1 Antibody (C-term) - References

Howard, P.W., et al. Biochem. Biophys. Res. Commun. 396(3):674-678(2010)
Howard, P.W., et al. Biochem. J. 429(1):127-136(2010)
Bhati, M., et al. EMBO J. 27(14):2018-2029(2008)
Ryan, D.P., et al. Proteins 70(4):1461-1474(2008)
Tran, Y.H., et al. J. Biochem. 140(1):105-119(2006)