

**ZFPM2 Antibody (C-term)**  
**Affinity Purified Rabbit Polyclonal Antibody (Pab)**  
**Catalog # AP16039b****Specification**

---

**ZFPM2 Antibody (C-term) - Product Information**

Application	WB,E
Primary Accession	<a href="#">Q8WW38</a>
Other Accession	<a href="#">NP_036214.2</a>
Reactivity	Human
Host	Rabbit
Clonality	Polyclonal
Isotype	Rabbit IgG
Calculated MW	128159
Antigen Region	883-911

**ZFPM2 Antibody (C-term) - Additional Information****Gene ID** 23414**Other Names**

Zinc finger protein ZFPM2, Friend of GATA protein 2, FOG-2, Friend of GATA 2, hFOG-2, Zinc finger protein 89B, Zinc finger protein multitype 2, ZFPM2, FOG2, ZNF89B

**Target/Specificity**

This ZFPM2 antibody is generated from rabbits immunized with a KLH conjugated synthetic peptide between 883-911 amino acids from the C-terminal region of human ZFPM2.

**Dilution**

WB~~1:1000

E~~Use at an assay dependent concentration.

**Format**

Purified polyclonal antibody supplied in PBS with 0.09% (W/V) sodium azide. This antibody is purified through a protein A column, followed by peptide affinity purification.

**Storage**

Maintain refrigerated at 2-8°C for up to 2 weeks. For long term storage store at -20°C in small aliquots to prevent freeze-thaw cycles.

**Precautions**

ZFPM2 Antibody (C-term) is for research use only and not for use in diagnostic or therapeutic procedures.

**ZFPM2 Antibody (C-term) - Protein Information****Name** ZFPM2

**Synonyms** FOG2, ZNF89B

**Function** Transcription regulator that plays a central role in heart morphogenesis and development of coronary vessels from epicardium, by regulating genes that are essential during cardiogenesis. Essential cofactor that acts via the formation of a heterodimer with transcription factors of the GATA family GATA4, GATA5 and GATA6. Such heterodimer can both activate or repress transcriptional activity, depending on the cell and promoter context. Also required in gonadal differentiation, possibly be regulating expression of SRY. Probably acts a corepressor of NR2F2 (By similarity).

**Cellular Location**

Nucleus.

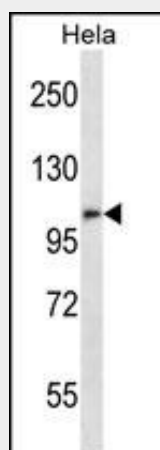
**Tissue Location**

Widely expressed at low level.

**ZFPM2 Antibody (C-term) - Protocols**

Provided below are standard protocols that you may find useful for product applications.

- [Western Blot](#)
- [Blocking Peptides](#)
- [Dot Blot](#)
- [Immunohistochemistry](#)
- [Immunofluorescence](#)
- [Immunoprecipitation](#)
- [Flow Cytometry](#)
- [Cell Culture](#)

**ZFPM2 Antibody (C-term) - Images**

ZFPM2 Antibody (C-term) (Cat. #AP16039b) western blot analysis in HeLa cell line lysates (35ug/lane). This demonstrates the ZFPM2 antibody detected the ZFPM2 protein (arrow).

**ZFPM2 Antibody (C-term) - Background**

The zinc finger protein encoded by this gene is a widely expressed member of the FOG family of transcription factors. The family members modulate the activity of GATA family proteins, which are important regulators of hematopoiesis and cardiogenesis in

mammals. It has been demonstrated that the protein can both activate and down-regulate expression of GATA-target genes, suggesting different modulation in different promoter contexts. A related mRNA suggests an alternatively spliced product but this information is not yet fully supported by the sequence. [provided by RefSeq].

#### **ZFPM2 Antibody (C-term) - References**

De Luca, A., et al. Clin. Genet. (2010) In press :  
Rose, J.E., et al. Mol. Med. 16 (7-8), 247-253 (2010) :  
Hyun, S., et al. Cell 139(6):1096-1108(2009)  
Rouf, R., et al. Circ. Res. 103(5):493-501(2008)  
Bleyl, S.B., et al. Eur. J. Hum. Genet. 15(9):950-958(2007)

#### **ZFPM2 Antibody (C-term) - Citations**

- [Long noncoding RNA CCDC26 as a modulator of transcriptional switching between fetal and embryonic globins.](#)