

FAM100B Antibody (Center)
Affinity Purified Rabbit Polyclonal Antibody (Pab)
Catalog # AP16155c**Specification**

FAM100B Antibody (Center) - Product Information

Application	WB,E
Primary Accession	Q8IYN6
Other Accession	NP_872371.1
Reactivity	Human
Host	Rabbit
Clonality	Polyclonal
Isotype	Rabbit IgG
Calculated MW	17877
Antigen Region	69-97

FAM100B Antibody (Center) - Additional Information**Gene ID** 283991**Other Names**

UBA-like domain-containing protein 2, UBALD2, FAM100B

Target/Specificity

This FAM100B antibody is generated from rabbits immunized with a KLH conjugated synthetic peptide between 69-97 amino acids from the Central region of human FAM100B.

Dilution

WB~~1:1000

E~~Use at an assay dependent concentration.

Format

Purified polyclonal antibody supplied in PBS with 0.09% (W/V) sodium azide. This antibody is purified through a protein A column, followed by peptide affinity purification.

Storage

Maintain refrigerated at 2-8°C for up to 2 weeks. For long term storage store at -20°C in small aliquots to prevent freeze-thaw cycles.

Precautions

FAM100B Antibody (Center) is for research use only and not for use in diagnostic or therapeutic procedures.

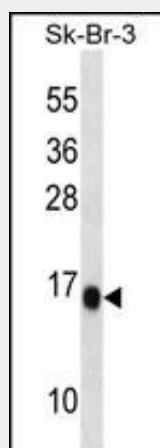
FAM100B Antibody (Center) - Protein Information**Name** UBALD2**Synonyms** FAM100B

FAM100B Antibody (Center) - Protocols

Provided below are standard protocols that you may find useful for product applications.

- [Western Blot](#)
- [Blocking Peptides](#)
- [Dot Blot](#)
- [Immunohistochemistry](#)
- [Immunofluorescence](#)
- [Immunoprecipitation](#)
- [Flow Cytometry](#)
- [Cell Culture](#)

FAM100B Antibody (Center) - Images



FAM100B Antibody (Center) (Cat. #AP16155c) western blot analysis in SK-BR-3 cell line lysates (35ug/lane). This demonstrates the FAM100B antibody detected the FAM100B protein (arrow).

FAM100B Antibody (Center) - References

Gerhard, D.S., et al. Genome Res. 14 (10B), 2121-2127 (2004) :