

**RBM45 Antibody (C-term)**  
**Affinity Purified Rabbit Polyclonal Antibody (Pab)**  
**Catalog # AP16299b****Specification**

---

**RBM45 Antibody (C-term) - Product Information**

Application	WB,E
Primary Accession	<a href="#">Q8IUH3</a>
Other Accession	<a href="#">NP_694453.2</a>
Reactivity	Human
Host	Rabbit
Clonality	Polyclonal
Isotype	Rabbit IgG
Calculated MW	53502
Antigen Region	447-476

**RBM45 Antibody (C-term) - Additional Information****Gene ID** 129831**Other Names**

RNA-binding protein 45, Developmentally-regulated RNA-binding protein 1, RB-1, RNA-binding motif protein 45, RBM45, DRB1 {ECO:0000312|EMBL:AAH665491}, DRBP1

**Target/Specificity**

This RBM45 antibody is generated from rabbits immunized with a KLH conjugated synthetic peptide between 447-476 amino acids from the C-terminal region of human RBM45.

**Dilution**

WB~~1:1000

E~~Use at an assay dependent concentration.

**Format**

Purified polyclonal antibody supplied in PBS with 0.09% (W/V) sodium azide. This antibody is purified through a protein A column, followed by peptide affinity purification.

**Storage**

Maintain refrigerated at 2-8°C for up to 2 weeks. For long term storage store at -20°C in small aliquots to prevent freeze-thaw cycles.

**Precautions**

RBM45 Antibody (C-term) is for research use only and not for use in diagnostic or therapeutic procedures.

**RBM45 Antibody (C-term) - Protein Information****Name** RBM45

**Synonyms** DRB1 {ECO:0000312|EMBL:AAH66549.1}, DRBP

**Function** RNA-binding protein with binding specificity for poly(C). May play an important role in neural development.

**Cellular Location**

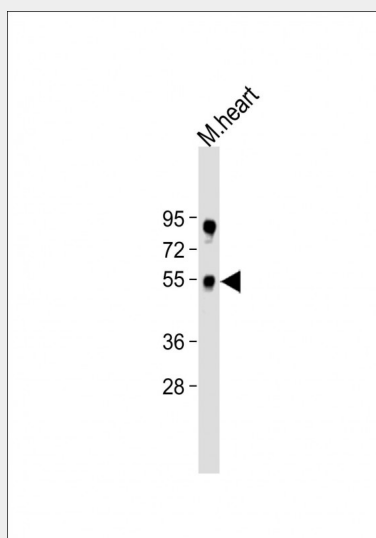
Cytoplasm. Nucleus. Note=Predominantly cytoplasmic. May shuttle between cytoplasm and nucleus

**RBM45 Antibody (C-term) - Protocols**

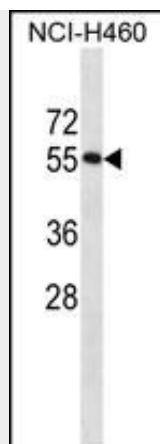
Provided below are standard protocols that you may find useful for product applications.

- [Western Blot](#)
- [Blocking Peptides](#)
- [Dot Blot](#)
- [Immunohistochemistry](#)
- [Immunofluorescence](#)
- [Immunoprecipitation](#)
- [Flow Cytometry](#)
- [Cell Culture](#)

**RBM45 Antibody (C-term) - Images**



All lanes : Anti-RBM45 Antibody (C-term) at 1:500 dilution+ mouse heart lysate Lysates/proteins at 20 µg per lane. Secondary Goat Anti-Rabbit IgG, (H+L), Peroxidase conjugated (ASP1615) at 1/15000 dilution. Observed band size : 55kDa Blocking/Dilution buffer: 5% NFDH/TBST.



RBM45 Antibody (C-term) (Cat. #AP16299b) western blot analysis in NCI-H460 cell line lysates (35ug/lane). This demonstrates the RBM45 antibody detected the RBM45 protein (arrow).

#### **RBM45 Antibody (C-term) - Background**

RNA-binding protein with binding specificity for poly(C). May play an important role in neural development.

#### **RBM45 Antibody (C-term) - References**

Lamesch, P., et al. Genomics 89(3):307-315(2007)

Tamada, H., et al. Biochem. Biophys. Res. Commun. 297(1):96-104(2002)